



日本原子力研究開発機構機関リポジトリ
Japan Atomic Energy Agency Institutional Repository

Title	Enhancement of uniform elongation by temperature change during tensile deformation in a 0.2C TRIP steel
Author(s)	Tsuchida Noriyuki, Harjo S.
Citation	Metals, 11(12), p.2053_1-2053_16
Text Version	Published Journal Article
URL	https://jopss.jaea.go.jp/search/servlet/search?5075370
DOI	https://doi.org/10.3390/met11122053
Right	© 2021 by the authors. Licensee MDPI, Basel, Switzerland. This article is an open access article distributed under the terms and conditions of the Creative Commons Attribution (CC BY) license (https://creativecommons.org/licenses/by/4.0/).

Article

Enhancement of Uniform Elongation by Temperature Change during Tensile Deformation in a 0.2C TRIP Steel

Noriyuki Tsuchida ^{1,*} and Stefanus Harjo ²¹ Graduate School of Engineering, University of Hyogo, 2167 Shosha, Himeji 671-2280, Japan² J-PARC Center, Japan Atomic Energy Agency, 2-4 Shirane Shirakata, Tokai-mura, Ibaraki 319-1195, Japan; stefanus.harjo@j-parc.jp

* Correspondence: tsuchida@eng.u-hyogo.ac.jp

Abstract: It is important to control the deformation-induced martensitic transformation (DIMIT) up to the latter part of the deformation to improve the uniform elongation (U.El) through the TRIP effect. In the present study, tensile tests with decreasing deformation temperatures were conducted to achieve continuous DIMIT up to the latter part of the deformation. As a result, the U.El was improved by approximately 1.5 times compared with that in the tensile test conducted at 296 K. The enhancement of the U.El in the temperature change test was discussed with the use of neutron diffraction experiments. In the continuous DIMIT behavior, a maximum transformation rate of about 0.4 was obtained at a true strain (ϵ) of 0.2, which was larger than that in the tensile test at 296 K. The tensile deformation behavior of ferrite (α), austenite (γ), and deformation-induced martensite (α') phases were investigated from the viewpoint of the fraction weighted phase stress. The tensile test with a decreasing deformation temperature caused the increase of the fraction weighted phase stress of α and that of α' , which was affected by the DIMIT behavior, resulting in the increase in the work hardening, and also controlled the ductility of α and α' , resulting in the enhancement of the U.El. Especially, the α phase contributed to maintaining high strength instead of α' at a larger ϵ . Therefore, not only the DIMIT behavior but also the deformation behavior of γ , α , and α' are important in order to improve U.El due to the TRIP effect.

Keywords: TRIP effect; uniform elongation; deformation-induced martensitic transformation; deformation temperature; neutron diffraction experiments



Citation: Tsuchida, N.; Harjo, S. Enhancement of Uniform Elongation by Temperature Change during Tensile Deformation in a 0.2C TRIP Steel. *Metals* **2021**, *11*, 2053. <https://doi.org/10.3390/met1122053>

Academic Editors: Zhenjia Xie, Marcello Cabibbo, Xueda Li and Xiangliang Wan

Received: 18 November 2021

Accepted: 15 December 2021

Published: 18 December 2021

Publisher's Note: MDPI stays neutral with regard to jurisdictional claims in published maps and institutional affiliations.



Copyright: © 2021 by the authors. Licensee MDPI, Basel, Switzerland. This article is an open access article distributed under the terms and conditions of the Creative Commons Attribution (CC BY) license (<https://creativecommons.org/licenses/by/4.0/>).

1. Introduction

The transformation-induced plasticity (TRIP) effect is a strengthening mechanism of metals that makes efficient use of the deformation-induced martensitic transformation (DIMIT) of the retained austenite (γ_R) and is expected to improve the ductility or elongation [1–6]. Because the TRIP effect also has been utilized in advanced high-strength steels, there is great interest in understanding how the DIMIT controls and the constituent phases interact to obtain superior mechanical properties [2,4,7]. In various studies on the TRIP effect, the DIMIT behavior of γ_R is key information for discussing the enhancement of the uniform elongation (U.El) through the TRIP effect [4–12]. Blondé et al. investigated the mechanical stability of γ_R using high-energy X-ray diffraction during tensile tests at various deformation temperatures [3]. They made clear that the mechanical stability of γ_R was influenced by a complex interplay among the carbon concentration in γ_R , the grain orientation, the load partitioning and the deformation temperature. Based on previous studies, it is desirable that γ_R is stable in the early stage of deformation and that the DIMIT is temporarily induced up to the latter part of the tensile deformation in order to obtain a better TRIP effect [8,13–15]. On the other hand, in cases where the improved U.El was obtained in various TRIP steels, all of the γ_R was not necessarily transformed into deformation-induced martensite (α') at the maximum load point [7,9,16]. This means that the DIMIT can be effectively used to improve the U.El through the TRIP effect. If such

DIMT behavior can be achieved, it is obvious that the U.El can be improved. However, such DIMT behavior is generally very difficult to obtain in tensile tests conducted at a constant temperature or strain rate [4,7,14,16]. The DIMT behavior depends on the temperature and the volume fraction of α' at a given true strain (ϵ) generally increases with a decrease in the deformation temperature [3,4,7,14,15]. It is expected that the DIMT can be temporarily induced up to the latter part of deformation by decreasing the temperature during the tensile deformation. We believed that this type of test would help to clarify the conditions required for the DIMT to improve the U.El through the TRIP effect. Therefore, we attempted to control the DIMT behavior by changing the temperature during the tensile deformation. In the present study, we conducted tensile tests during which the deformation temperature was decreased in order to control the DIMT behavior, and we investigated the improvement of the U.El. The DIMT behaviors were investigated by X-ray and neutron diffraction experiments [4,17–19]. The tensile deformation behaviors of the austenite (γ), ferrite (α), and α' phases of a TRIP steel were also studied through neutron diffraction experiments [4,7,17]. Harjo et al. analyzed the phase stress of α' with *in situ* neutron diffraction experiments and discussed the stress contribution from α' to the flow stress of a TRIP steel [7]. The quantitative estimation of α' based on this procedure must play an important role in the discussions for the role of α' on the tensile deformation behavior of TRIP steels. From the obtained results, the relationships among the U.El, the DIMT behavior, and the deformation behavior of each phase were summarized and the DIMT conditions for an efficient TRIP effect were discussed.

2. Experimental Procedures

This study used a TRIP-aided multi-microstructure steel obtained from a 0.2C steel (0.2C, 1.51Si, 1.22Mn, 0.022P, 0.0025S, 0.039Al by mass%) [7,12,18]. The ingots were vacuum melted, hot rolled to a thickness of 8 mm by finishing at 1123 K, and then cold rolled to a thickness of 2.2 mm. To obtain the TRIP steel, the cold-rolled steel sheets were annealed at 1073 K for 1.8 ks using a fluid bath under a N₂ atmosphere, followed by air cooling to 998 K. The sheets were then isothermally held at 673 K for 180 s followed by air cooling. Surface grinding was conducted to obtain a final thickness of 1.8 mm. Microstructure observation was performed by using a scanning electron microscope JEOL-7001F (SEM, JEOL, Tokyo, Japan) equipped with a measurement system of electron back scattering diffraction (EBSD) (TSL Solutions, Sagamihara, Japan). The EBSD pattern was analyzed while the possible phases were set as body-centered cubic (bcc) and face-centered cubic, and the scanning pitch was 0.2 μm .

Static tensile tests were conducted at a strain rate of $3.3 \times 10^{-4} \text{ s}^{-1}$ at various deformation temperatures between 77 and 573 K by using a gear-driven type tensile test machine Instron 5082 (Instron, Kawasaki, Japan) equipped with a 100 kN load cell. Here, tensile test specimens with a gage width of 5 mm, a gage length of 25 mm, and a thickness of 1.8 mm were prepared. The deformation temperatures were controlled by using liquid nitrogen (77 K), an environmental chamber (123–373 K), and a heating furnace (373–573 K) [14,15,20]. Tensile test specimens that were interrupted at various ϵ during tensile deformation at various temperatures were also prepared for calculating the volume fractions of γ_R (V_γ) and α' ($V_{\alpha'}$). V_γ , $V_{\alpha'}$, and the carbon content of γ_R in the 0.2C TRIP steel were estimated by X-ray diffraction experiments using Cu-K α radiation (Rigaku, Tokyo, Japan) [7,14,15,18]. The quantitative estimations of V_γ and $V_{\alpha'}$ by X-ray diffraction were based on the principle that the total integrated intensity of all diffraction peaks for each phase in a mixture was proportional to the phase volume fraction [14,15,20].

We also conducted tensile tests during which the deformation temperature was changed during the tensile deformation to control the DIMT behavior. In this study, two types of tests were performed, as shown in Figure 1. The deformation temperature range was between 123 and 373 K, using the environmental chamber. Tensile test A, as seen in Figure 1a, was conducted up to ϵ of about 0.15 at 373 K and was unloaded. Then, the test specimens were cooled to various deformation temperatures below 296 K, and resumed

where $a_{\alpha'}$, a_{γ} , $\rho_{\alpha'}$, and ρ_{γ} are lattice constants and the atomic densities of α' and γ [20,21].

$a_{\alpha'}$ before the deformation ($a_{\alpha',0}$) of the present TRIP steel was described by a_{γ} before where $a_{\alpha'}$, a_{γ} , $\rho_{\alpha'}$, and ρ_{γ} are lattice constants and the atomic densities of α' and γ [20,21]. deformation ($a_{\gamma,0}$) [7]. $a_{\alpha',0}$ before the deformation ($a_{\alpha',0}$) of the present TRIP steel was described by a_{γ} before deformation ($a_{\gamma,0}$) [7]:

$$\begin{aligned} a_{\alpha',0} &= 0.8037 a_{\gamma,0} \\ a_{\alpha',0} &= 0.8037 a_{\gamma,0} \end{aligned} \quad (3)$$

$d_{hkl}^{\alpha'}$ for α' was calculated from $a_{\alpha',0}$ estimated by Equation (3) and was used for estimating $d_{hkl}^{\alpha'}$ for α' using Equation (1) [4,7]. In the present study, the data from the neutron diffraction patterns in the loading direction were mainly analyzed because the peaks between α' and α' in the patterns of the transverse direction were difficult to separate due to the proximity of the peaks caused by the Poisson effect [4,7]. $\epsilon_{hkl}^{\alpha'}$ was estimated as the averaged value of $\epsilon_{hkl}^{\alpha'}$ for each phase ((111), (200), (311) for γ and (110), (200), (211) for α' phases, respectively) [4,7]. V_{γ} and $V_{\alpha'}$ were calculated from the integrated intensities obtained by neutron diffraction experiments [4,7]. In terms of the change in $V_{\alpha'}$, which is associated with the DIMT behavior, the analyses of the α' peaks were evaluated as having a lower reliability because those peaks were low and broadened. Therefore, the increase in $V_{\alpha'}$ was considered to be the decrease in V_{γ} [4].

In situ neutron diffraction measurements during tensile test were also carried out at constant deformation temperatures, 296 K, 245 K, 188 K, and 128 K, to investigate the effect of deformation temperature on phase strain in the TRIP steel. The deformation temperatures were controlled by a liquid nitrogen cooling system equipment [17,23]. The temperature was monitored using a thermocouple attached on the specimen at the grip parts. Macroscopic strains were measured by a strain gage. The size of incident beam slit was 5 mm \times 5 mm, and a pair of radial collimators viewing 5 mm width was adopted. The tensile test was conducted by a step-increasing load control with 300 s holding time in the elastic region and with the initial strain rate of $2 \times 10^{-5} \text{ s}^{-1}$ in the plastic region. The data for the elastic and plastic regions was then sliced per 600 and 600 measurements were performed per the tensile strength (TS), lattice strain, and phase strain for the neutron diffraction experiments are calculated based on the same concept as Equation (1)–(7) [5,16].

33. Results and Discussion

33.1. Effect of Temperature on Tensile Properties in a 0.2C TRIP Steel

Figure 2 shows the SEM-EBSD phase map (a) and inverse pole figure map (b). In the phase map, red and green indicate α and γ , respectively. Note that ferrite and bainite were treated as one α phase here. γ_{R} was dispersed almost uniformly at the α grain boundaries. We also observed the microstructure using an optical microscope in previous studies [18]. In the optical micrograph, γ_{R} was also dispersed in bainite, and the average size of γ_{R} was approximately 1 μm . The volume fractions of ferrite, bainite, and γ_{R} were 67.6, 21.8, and 10.6%, respectively, and the carbon content of γ_{R} was 1.28 mass% [7,12].

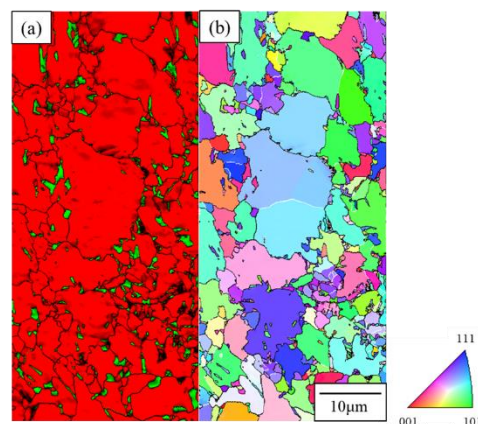


Figure 2. EBSD phase mapping image (a) and orientation color map (b) in the 0.2C TRIP steel.

Figure 2. EBSD phase mapping image (a) and orientation color map (b) in the 0.2C TRIP steel.

Figure 3 shows the nominal stress (σ)–nominal strain (ϵ) curves of the 0.2C TRIP steel at various temperatures between 77 and 573 K. σ increased with the decrease in temperature and failed in a brittle manner at 77 K. U_{EL} and total elongation indicated better values at 296 and 323 K. Almost the same σ – ϵ curves and mechanical properties were exhibited at 373 and 473 K. U_{EL} and total elongation decreased with the increase in deformation temperature, but TS increased slightly when the temperature increased from 473 to 573 K. This seems to be associated with the deformation induced bainitic transformation of the TRIP steel. Figure 4 shows the 0.2% proof strength (0.2% RS), TS, and U_{EL} as functions of the deformation temperature. The 0.2% RS and TS increased with the decrease in temperature. The 0.2% RS decreased slightly near 223 K and increased again below 173 K. The σ seems to be transformed to ϵ before yielding near 223 K. Thus, the temperature of 223 K is close to the M_s point of the present TRIP steel [14,20,24,25]. U_{EL} showed a maximum value at 296 and 323 K. Figure 5 shows the true stress (σ) and work hardening rate ($d\sigma/d\epsilon$) as a function of ϵ at various temperatures. $d\sigma/d\epsilon$ at a given ϵ increased with the decrease in temperature. As shown in Figure 4 that ϵ at the plastic instability, i.e., U_{EL}, was the largest at 296 K, the $d\sigma/d\epsilon$ at $\epsilon \geq 0.2$ at 296 K was also larger than those at temperatures ≤ 296 K. This is associated with the change in V_c due to the DDMT during tensile deformation [1,5].

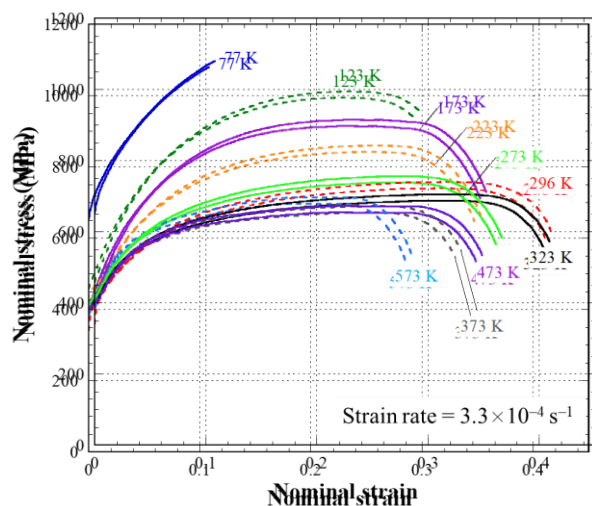


Figure 3. Nominal stress–nominal strain curves of the 0.2C TRIP steel obtained by tensile tests at various deformation temperatures.

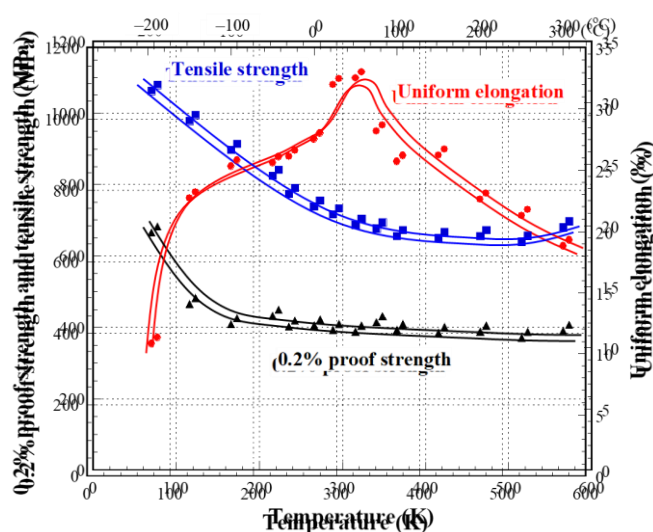


Figure 4. 0.2% proof strength, tensile strength, and uniform elongation as a function of temperature in the 0.2C TRIP steel.

Figure 4. 0.2% proof strength, tensile strength, and uniform elongation as a function of temperature in the 0.2C TRIP steel.

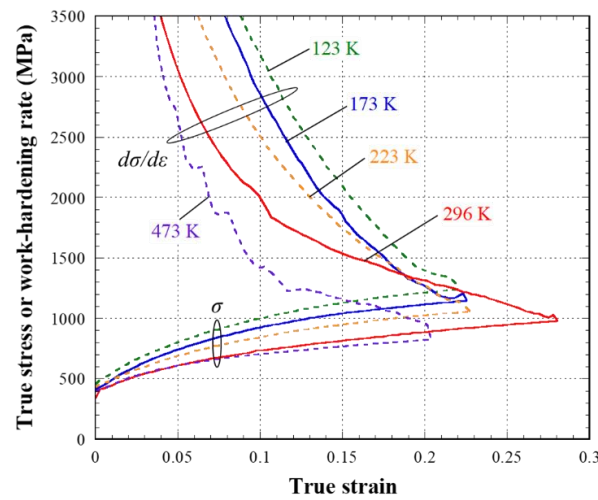


Figure 5. True stress (σ) and work hardening rate ($d\sigma/de$) as a function of true strain at various deformation temperatures.

3.2. Mechanical Properties Obtained from Test A

Next, the experimental results obtained from test A are discussed. Figure 6 shows the $s-e$ curves obtained from test A. The figure shows the $s-e$ curves up to the maximum load point and the dashed line shows the $s-e$ curve obtained from the tensile test at 296 K. When the tensile tests were conducted again at various temperatures below 296 K after applying e of about 0.17 at 373 K, U.EI became larger than that at 296 K. However, the effect of the reloading temperature on U.EI was small, and the difference in U.EI between test A and the tensile test at 296 K was approximately only 5%, being independent of the temperature. On the other hand, in the $s-e$ curves reloaded at below 243 K, the elastic limit immediately after reloading was smaller than that at e of about 0.17 at 373 K. The elastic limit seems to decrease due to the transformation strain because the DIMT occurred below the yield strength at temperatures less than 243 K [20,24,25]. Figure 7 shows a comparison of the TS and U.EI between test A and the tensile tests at constant deformation temperatures. Here, the TS and U.EI obtained from test A are shown as functions of the reloading temperature after tensile deformation at 373 K. The TS at a given temperature was almost the same between test A and the tensile test at constant deformation temperatures. In test A, U.EI at below 296 K was improved compared with that in the tensile tests but was almost the same independent of the temperature below 273 K. The difference in U.EI between test A and the tensile test became slightly larger at lower temperatures.

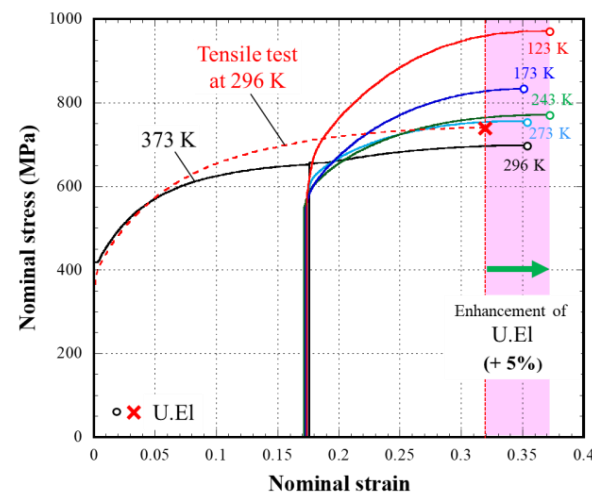
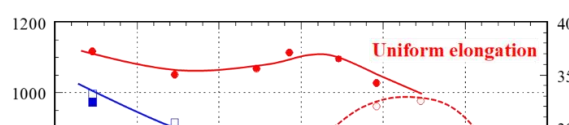


Figure 6. Nominal stress–nominal strain curves obtained by test A. Here, the nominal stress–nominal strain curve at 296 K is also shown as a dashed line.



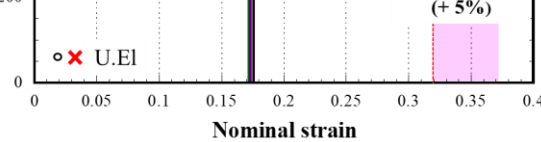


Figure 6. Nominal stress–nominal strain curves obtained by test A. Here, the nominal stress–nominal strain curve at 296 K is also shown as a dashed line.

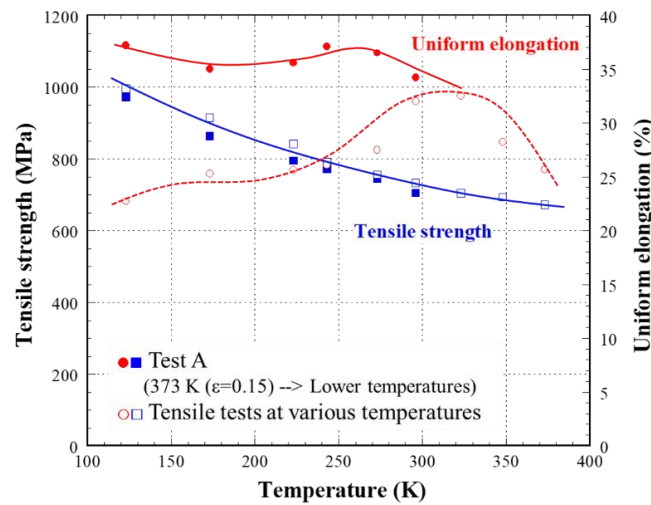


Figure 7. Tensile strength and uniform elongation as a function of deformation temperature obtained by test A and the tensile tests. Here, the temperature of test A means the reloading temperature after tensile deformation at 373 K.

Figure 8 shows $V_{\alpha'}$ as a function of ϵ obtained from the tensile tests at constant deformation temperatures (a) and test A (b). Here, the plots are the calculated results obtained from the X-ray diffraction experiments and the lines are the calculated results obtained by using the following equation by Matsumura et al. [9,10]:

$$V_{\alpha'} = V_{\gamma_0} \frac{V_{\gamma_0}}{1 + (k/q)V_{\gamma_0}^q \epsilon^q} \quad (4)$$

where V_{γ_0} is V_{γ} before deformation, k is a constant related to the mechanical stability of α' and q is the strain exponent related to the autocatalytic effect [10]. The values of k and q used in Figure 8 are summarized in Table 1. $V_{\alpha'}$ at a given ϵ increased with the decrease in deformation temperature. In Figure 8a, Figure 8a and Figure 8b are diagrams of α' transformation at the early stage of deformation with the decrease in deformation temperature transformed from the elastic limit ($\epsilon = 0$) at 1230 and 123 K and 213 K in Figure 8a. In this case, we used X-ray diffraction experiments that α' had transformed to α' by just cooling to 77 K. At temperatures > 296 K, α' was saturated at about 0.2. Regarding 296 and 323 K in Figure 8a, we determined that the DIMT behavior was almost the same. In Figure 8b, the lower the reloading temperature was, the larger the increase in $V_{\alpha'}$ became just after the reloading. Such DIMT behavior did not, however, lead to a larger improvement of the U.El in test A, as seen in Figures 6 and 7 [14,15,20]. On the other hand, the difference in V_{γ} at ϵ of 0.15 between Figure 8a,b became larger with the decrease in temperature. The DIMT until ϵ of 0.15 seems to be suppressed in the tensile deformation at 373 K in test A. Because the changes of V_{γ} from ϵ of 0.15 to the TS in test A were larger in comparison with the cases of the tensile tests at constant deformation temperatures, U.El in test A became larger with the decrease in the reloading temperature, as seen in Figure 7. The U.El below 273 K in test A were approximately 5% larger than that obtained in the tensile test at 296 K. The reason might be that a large amount of γ_R transformed into α' just after the reloading at a lower reloading temperature (Figure 8b). The difference in the U.El between test A and the tensile test at 296 K can almost be explained by the difference in the DIMT behavior. To retain more V_{γ} up to larger ϵ is effective to the TRIP effect from the viewpoint of the DIMT of γ_R [1,8]. However, we confirmed that it was difficult to improve the U.El considerably by conducting test A. Based on the results obtained from test A, we designed test B, in which the deformation temperature was gradually–continuously decreased during tensile deformation, as seen in Figure 1b.

formed into a' just after the reloading at a lower reloading temperature (Figure 8b). The difference in the U.El between test A and the tensile test at 296 K can almost be explained by the difference in the DIMT behavior. To retain more V_γ up to larger ϵ is effective to the TRIP effect from the viewpoint of the DIMT of γ_R [1,8]. However, we confirmed that it was difficult to improve the U.El considerably by conducting test A. Based on the results obtained from test A, we designed test B, in which the deformation temperature was gradually–continuously decreased during tensile deformation, as seen in Figure 1b.

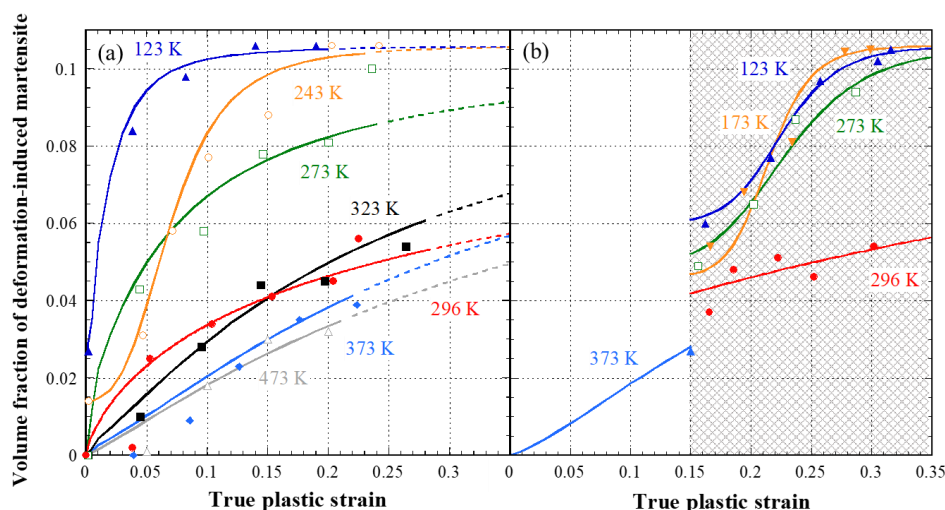


Figure 8. Volume fraction of deformation-induced martensite as a function of true strain obtained by the tensile tests at various deformation temperatures (a) and test (b).

Table 1. Values of k and q in Equation (4) in the 0.2C TRIP steel at various deformation temperatures.

Temperature (K)	(a) Tensile Test		(b) Test A	
	k	q	k	q
123	6.42×10^4	2.132	3.14×10^8	9.54
123	6.42×10^4	2.132	3.50×10^{10}	9.54
173	—	—	2.90×10^{10}	12.2
243	2.61×10^5	3.495	—	—
273	19722	1.091	2.89×10^6	6.83
296	17887	0.740	30.122	1.195
323	8097	1.291	—	—
373	56.32	1.328	56.32	1.328
473	32.17	1.154	—	—
473	32.17	1.154	—	—

3.3. Enhancement of Uniform Elongation in Test B

Figure 9 shows the s – ϵ curves obtained from test B and the tensile test at the constant deformation temperature of 296 K. It is noted that the U.El in test B was 51%, approximately 1.5 times larger than that obtained in the tensile test at 296 K. The continuous decrease in the deformation temperature is effective to maximize the TRIP effect, resulting in a great improvement in the U.El. Figure 10 shows the changes in the deformation temperature (a) and σ and $d\sigma/d\epsilon$ (b) as functions of ϵ obtained from test B and the tensile test at 296 K. $d\sigma/d\epsilon$ decreased with the increase in ϵ in the tensile test at 296 K. However, in test B, $d\sigma/d\epsilon$ changed in the increasing trend when the temperature continuously decreased from 323 K after ϵ of about 0.3. Such $d\sigma/d\epsilon$ behavior is accompanied with the enlargement of ϵ , satisfying the plastic instability, i.e., the U.El [1,8,26]. It is expected that the DIMT behavior and the deformation behavior of each phase affect the $d\sigma/d\epsilon$ behavior after ϵ of 0.3 in test B.

temperature (a) and σ and $d\sigma/d\varepsilon$ (b) as functions of ε obtained from test B and the tensile test at 296 K. $d\sigma/d\varepsilon$ decreased with the increase in ε in the tensile test at 296 K. However, in test B, $d\sigma/d\varepsilon$ changed in the increasing trend when the temperature continuously decreased from 323 K after ε of about 0.3. Such $d\sigma/d\varepsilon$ behavior is accompanied with the enlargement of ε , satisfying the plastic instability, i.e., the UFI [18,26]. It is expected that the DIMT behavior and the deformation behavior of each phase affect the $d\sigma/d\varepsilon$ behavior after ε of 0.3 in test B.

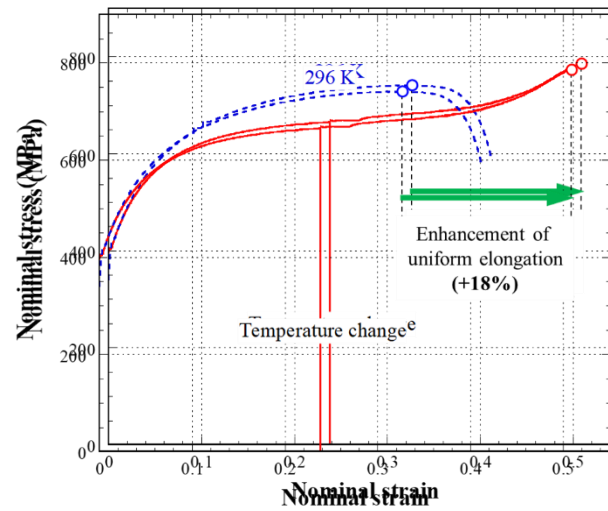


Figure 9. Nominal stress–nominal strain curves obtained by test B and the tensile test at 296 K.

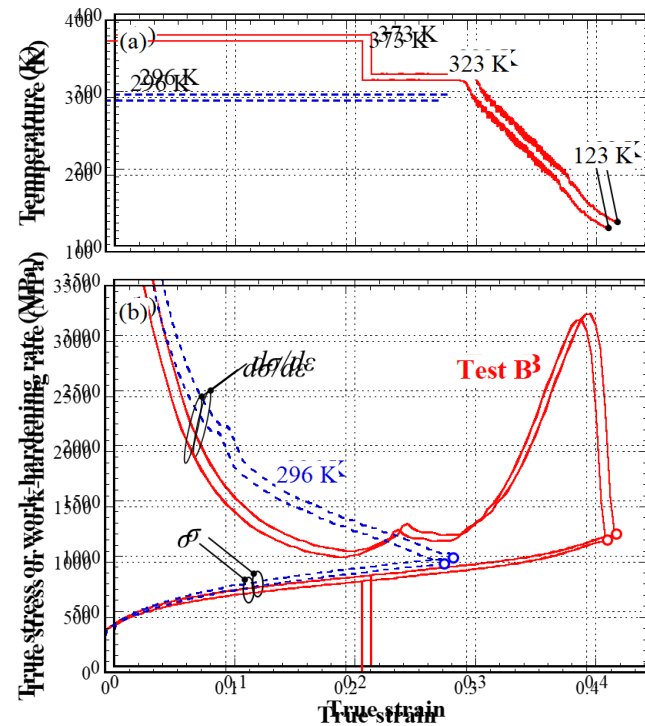


Figure 10. Deformation temperature (a) and true stress (σ) or work-hardening rate ($d\sigma/d\varepsilon$) (b) as functions of true strain obtained by test B and the tensile test at 296 K.

Next, we discuss the DIMT behavior and the tensile deformation behavior of each phase in test B based on the neutron diffraction experiments. Figure 11 shows $V_{\alpha'}$ (a) and the transformation rate (b) as functions of ε in test B and the tensile test at 296 K [7]. The values of k and q in Equation (4) used in Figure 11 are summarized in Table 2. Here, the transformation rate in Figure 11b was calculated by using Equation (4) [9,15,20]. In the tensile test at 296 K, $V_{\alpha'}$ monotonically increased from the early stage of tensile deformation, and the maximum transformation rate of about 0.3 was indicated at ε of 0.03, i.e., at the early stage of tensile deformation. On the other hand, in test B, $V_{\alpha'}$ was smaller than that in the tensile test at 296 K until ε of about 0.25. $V_{\alpha'}$ was larger in test B after ε of 0.25 and almost all of γ_R was transformed into α' at the maximum load point. The transformation rate in test B gradually increased and the maximum transformation rate of about 0.4 was indicated at ε of 0.2. As seen in Figure 10, at ε of about 0.2, the deformation temperature decreased

in the TRIP steel were difficult because they have the bcc structure and the similar lattice constant. They were assumed to behave as one α phase in this study. In the tensile test at 296 K, ε_{phase}^r of α was compressive, and those for γ and α' were tensile. This is coincident with the experimental results in the previous studies [16,17,27,28]. Immediately after yielding, stress partitioning occurred between γ and α , and the DIMT started [4, 7, 16, 17]. The difference in ε_{phase}^r between γ and α became slightly smaller with the increase in ε because ε_{phase}^r of γ was decreased at $\varepsilon > 0.2$. On the other hand, in test B, the difference in ε_{phase}^r between γ and α was smaller than that in the tensile test at 296 K. After the reloading at ε of about 0.2 at 323 K, ε_{phase}^r of γ became larger but was gradually smaller at ε of about 0.3. ε_{phase}^r of α' in test B was almost the same as that in the tensile test at 296 K and increased slightly after ε of 0.3. ε_{phase}^r of γ and α were different from each other in the comparisons of ε_{phase}^r between test B and the tensile test at 296 K. However, it is difficult to discuss the improvement of U.EI in test B from only ε_{phase}^r because the deformation temperature and the changes of V_γ and $V_{\alpha'}$ during tensile deformation are different between the two types of tests [4, 17, 29].

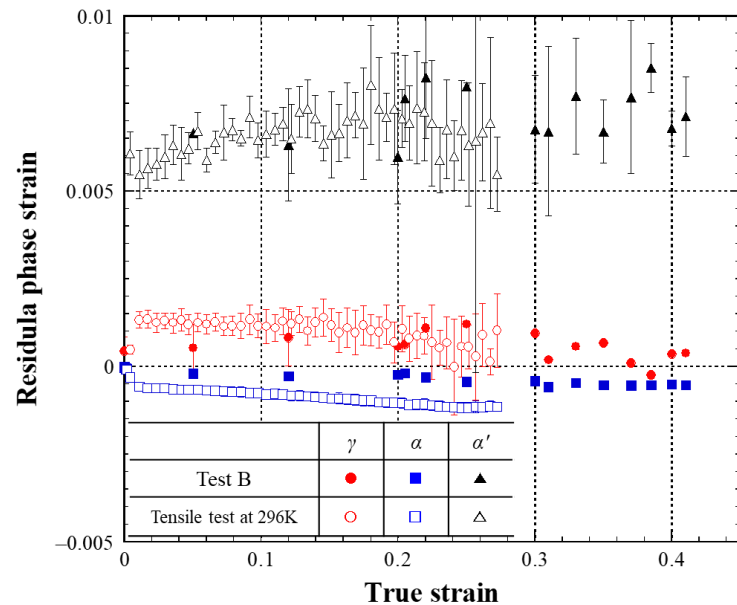


Figure 12. Residual phase strains of austenite (γ), ferrite (α), and deformation-induced martensite (α') phases as functions of true strain obtained by test B and the tensile test at 296 K [7].

Figure 13 shows the phase strains of γ (ε_γ), α (ε_α), and α' ($\varepsilon_{\alpha'}$) as a function of ε obtained by the *in situ* neutron diffraction experiments during tensile deformation at constant deformation temperatures of 296 K (a) [7], 245 K (b), 188 K (c), and 128 K (d). ε_α at a given ε became larger with a decrease in the deformation temperature whereas ε_γ slightly became smaller. $\varepsilon_{\alpha'}$ became larger with a decrease in the deformation temperature at $\varepsilon < 0.15$ but that was almost the same as being independent of the deformation temperature at $\varepsilon > 0.15$, except for the data at 296 K. $\varepsilon_{\alpha'}$ indicates the largest value among the three phases and the calculated phase stress of α' is approximately 2–3 GPa in Figure 13 [4, 7, 17]. Figure 14 shows $V_{\alpha'}$ as a function of ε at various deformation temperatures. The dashed lines in Figure 14 are the calculated results by Equation (4), and the values of k and q are summarized in Table 2. $V_{\alpha'}$ at a given ε increased with a decrease in the deformation temperature. The larger γ was transformed into α' at the early stage of tensile deformation with the lower deformation temperature [14, 15, 17, 20]. At 128, 188, and 245 K, the increase of $V_{\alpha'}$ was almost slowed down after $\varepsilon >$ about 0.15. Judging from Figures 13 and 14, ε_γ and $\varepsilon_{\alpha'}$ seem to be associated with their changes of volume fraction. $\varepsilon_{\alpha'}$ is smaller when $V_{\alpha'}$ is small. In Figure 13, $\varepsilon_{\alpha'}$ at $\varepsilon < 0.15$ was larger with an increase in $V_{\alpha'}$ due to the decrease in the deformation temperature [17, 23]. At $\varepsilon > 0.15$, the increase of $V_{\alpha'}$ was almost stagnated except for 296 K and the $V_{\alpha'}$ was about 0.08 or more. Thus, $\varepsilon_{\alpha'}$ at $\varepsilon > 0.15$ in Figure 13b–d were almost the same, independent of the deformation temperature. On the other hand, ε_γ at $\varepsilon > 0.1$ became slightly smaller, with a decrease in the deformation temperature because of decreasing the V_γ . ε_γ , $\varepsilon_{\alpha'}$ and $\varepsilon_{\alpha'}$ of the TRIP steel at lower temperatures were also reported by Yamashita et al. [17]. They studied *in situ* neutron diffraction experiments during tensile deformation at various temperatures between 134 and 293 K using a TRIP-aided multi-microstructure steel obtained from a 0.31C steel having a $V_{\gamma 0}$ of 17.9%. The difference between ε_γ and ε_α was also decreased with a decrease in

ated except for 296 K and the $V_{\alpha'}$ was about 0.08 or more. Thus, $\varepsilon_{\alpha'}$ at $\varepsilon > 0.15$ in Figure 13b–d were almost the same, independent of the deformation temperature. On the other hand, ε_{γ} at $\varepsilon > 0.1$ became slightly smaller, with a decrease in the deformation temperature because of decreasing the V_{γ} . ε_{γ} , ε_{α} , and $\varepsilon_{\alpha'}$ of the TRIP steel at lower temperatures were also reported by Yamashita et al. [17]. They studied *in situ* neutron diffraction experiments during tensile deformation at various temperatures between 134 and 293 K using a TRIP-aided multi-microstructure steel obtained from a 0.31C steel having a $V_{\gamma 0}$ of 17.9%. The difference between ε_{γ} and ε_{α} was also decreased with a decrease in the deformation temperature, and ε_{α} was smaller than $\varepsilon_{\alpha'}$ at temperatures below 223 K [17]. The effect of the deformation temperature on the phase strain in Figure 13 seems to be associated with $\varepsilon_{\alpha'}$ in Figure 12. The difference of the phase strains between γ and α at a given ε became smaller with a decrease in the deformation temperature. The phase strain of α' at a given ε increased as the deformation temperature decreased. Those temperature dependences on the phase strains were almost coincident with $\varepsilon_{\alpha'}$ of the γ , α , and α' in Figure 12. $\varepsilon_{\alpha'}$ increased with the increasing of $V_{\alpha'}$, which is similar to ε_{α} in Figure 12. $\varepsilon_{\alpha'}$ increased with the increasing of $V_{\alpha'}$, which is similar to ε_{α} in Figure 12. The difference in $\varepsilon_{\alpha'}$ between γ and α at $\varepsilon < 0.2$ was smaller in test B because the deformation temperature was higher and $V_{\alpha'}$ was smaller in comparison with the tensile test at 296 K. At $\varepsilon > 0.3$, the deformation temperature was lowered during tensile deformation and $V_{\alpha'}$ increased with the higher transformation rate, which seem to lead to the decrease in $\varepsilon_{\alpha'}$. ε_{α} decreased little by the decrease in the deformation temperature in contrast to the case of tensile test at 296 K. The changes of $\varepsilon_{\alpha'}$ of the γ , α , and α' phases in test B seem to be complicated because both $V_{\alpha'}$ and the deformation temperature are changed during tensile deformation.

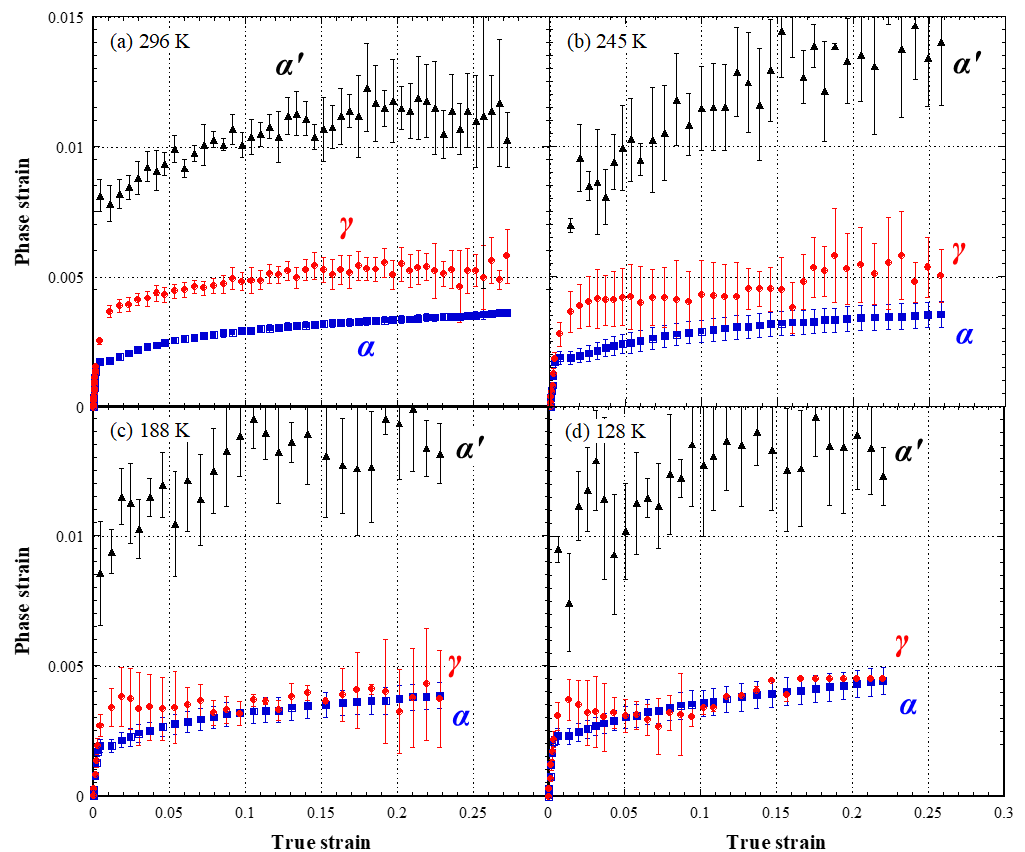


Figure 13. Phase strains of austenite (γ), ferrite (α), and deformation-induced martensite (α') phases as functions of true strain obtained by *in situ* neutron diffraction experiments during tensile deformation at 296 K (a) [7], 245 K (b), 188 K (c), and 128 K (d).

Figure 13. Phase strains of austenite (γ), ferrite (α), and deformation-induced martensite (α') phases as functions of true strain obtained by *in situ* neutron diffraction experiments during tensile deformation at 296 K (a) [7], 245 K (b), 188 K (c), and 128 K (d).

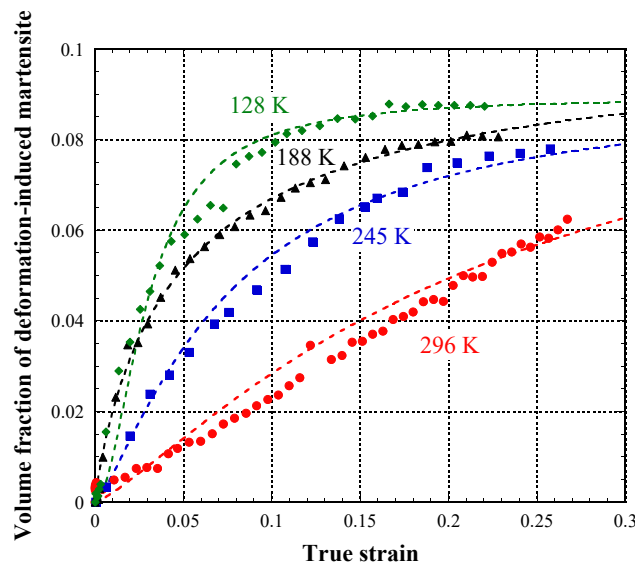


Figure 14. Volume fraction of deformation-induced martensite as a function of true strain obtained by *in situ* neutron diffraction experiments during tensile deformation at 296 K [7], 245 K, 188 K, and 128 K. Here, the dashed lines are calculated by using Equation (4).

Next, we try to discuss the improvement of UoE in the test B from a and the change of volume fractions during the DDMF behavior. Based on a weighted phase stress-strain [17,30,31], given a target mean calculated as the fraction-weighted phase stress by stress by the following stress equilibrium [17,30,31],

$$\sigma = V_{\alpha} \sigma_{\alpha} + V_{\gamma} \sigma_{\gamma} + V_{\alpha'} \sigma_{\alpha'} \tag{5}$$

where σ_{α} , σ_{γ} , and $\sigma_{\alpha'}$ are the phase stresses for α , γ , and α' phases, respectively. $V_i \sigma_i$ ($i = \alpha, \gamma, \text{ and } \alpha'$) means the fraction-weighted phase stress for each phase. From the relationship between ϵ^{phase} and σ , the phase strain at a given σ can be estimated by using the slope in the elastic regime [26]. σ_{α} , σ_{γ} , and $\sigma_{\alpha'}$ are calculated by using the following equation, the elastic regime [26]. σ_{α} , σ_{γ} , and $\sigma_{\alpha'}$ are calculated by using the following equation,

$$\sigma_i = E_i \epsilon_i \tag{6}$$

where σ_i is phase stress, ϵ_i phase strain, and E_i Young's modulus ($i = \alpha, \gamma, \text{ and } \alpha'$), respectively. Figure 15 shows $V_{\alpha} \sigma_{\alpha}$ (a) and $V_{\alpha'} \sigma_{\alpha'}$ (b) as a function of ϵ in the tensile tests at the constant deformation temperatures of 296 K and 128 K, and test B. The $V_{\alpha} \sigma_{\alpha}$ of test B was slightly smaller in that of the tensile test at 296 K and its change at $\epsilon = 0.3$ became larger because the deformation temperature was decreasing from its of 0.3. The change of $V_{\alpha'} \sigma_{\alpha'}$ in Figure 15b was closely associated with the $V_{\alpha} \sigma_{\alpha}$ as seen in Figures 1f and 1g. This means the effect of DIM on σ_{α} is very large. Table 8 represents the fraction-weighted phase stresses and σ at the maximum load point in test B and represents the fraction-weighted phase stresses and σ at the maximum load point in test B and the tensile test at 296 K, respectively. The fully 200 MPa of 50 MPa, and 100 MPa, respectively. The difference of the measured σ at the maximum load point was approximately 200 MPa, 50 MPa, and 100 MPa in Figure 10b and 11b, and the difference of the measured results at the maximum load point was approximately 200 MPa as seen in Figure 10b, and although the differentiated results using Equation (5) are in good agreement with the measured σ , even though the difference between the calculated σ by Equation (5) and the measured σ should be considered.

Figures 13 and 15 that the α phase has a key role in test B. It is concluded that not only the DIMT behavior but also the role of α , which plays a crucial role in maintaining high strength, instead of α' at a larger ε are very important in the efficient TRIP effect.

4. Conclusions

In this study, we conducted tensile tests in which the deformation temperature was decreased during the tensile deformation in order to investigate the DIMT conditions required for an efficient TRIP effect. The following conclusions were obtained.

1. In the tensile tests, in which the test specimens were reloaded at lower temperatures after being unloaded once, the improvement of U.El was about 5% and almost independent of the reloading temperature. This is because a large amount of γ_R was transformed into α' just after the reloading at lower temperatures.
2. On the other hand, when the deformation temperature was decreased continuously during the tensile deformation, a very large U.El of 51% was obtained. This value was about 1.5 times larger than that obtained in the tensile test at room temperature.
3. In terms of the DIMT behavior in the temperature change test, $V_{\alpha'}$ was smaller in the early stage of deformation and larger after ε of 0.25 compared with that in the tensile test at 296 K. Almost all of γ_R was transformed into α' at the maximum load point. The transformation rate gradually increased and the maximum transformation rate of about 0.4 was indicated at ε of about 0.2.
4. The neutron diffraction experiments in the temperature change test revealed that not only the DIMT behavior but also the deformation behavior of γ , α , and α' are important factors in the TRIP effect. The α phase contributed to maintain high strength, instead of α' at a larger ε in addition to the DIMT behavior, and played an important role in the enhancement of U.El.

Author Contributions: Conceptualization, N.T.; methodology, N.T.; investigation, N.T. and S.H.; data curation, N.T. and S.H.; writing—original draft preparation, N.T.; writing—review and editing, N.T. and S.H.; supervision, N.T. and S.H. All authors have read and agreed to the published version of the manuscript.

Funding: This research received no external funding.

Data Availability Statement: Data presented in this article are available at request from the corresponding author.

Acknowledgments: The authors are grateful to K. Aizawa and T. Kawasaki of J-PARC Center, Japan Atomic Energy Agency for their help and valuable discussions. The neutron diffraction experiments were performed at the J-PARC/MLF beamline in JAEA (proposal no. 2015A044).

Conflicts of Interest: The authors declare no conflict of interest.

References

1. Angel, T. Formation of martensite in austenitic stainless steels. *J. Iron Steel Inst.* **1954**, *177*, 165–174.
2. Bouquerel, J.; Verbeken, K.; De Cooman, B.V. Microstructure-based model for the static mechanical behaviour of multiphase steels. *Acta Mater.* **2006**, *54*, 1443–1456. [[CrossRef](#)]
3. Blonde, R.; Jimenez-Melero, E.; Zhao, L.; Wright, J.P.; Bruck, E.; van der Zwaag, S.; van Dijk, N.H. High-energy X-ray diffraction study on the temperature-dependent mechanical stability of retained austenite in low-alloyed TRIP steels. *Acta Mater.* **2012**, *60*, 565–577. [[CrossRef](#)]
4. Tsuchida, N.; Tanaka, T.; Toji, Y. Analysis of tensile deformation behavior by *in situ* neutron diffraction experiments of a 1 GPa-grade TRIP steel with high elongation. *ISIJ Int.* **2020**, *60*, 1329–1337. [[CrossRef](#)]
5. Sugimoto, K.; Kobayashi, M.; Hashimoto, S. Ductility and strain-induced transformation in a high-strength transformation-induced plasticity-aided dual-phase steel. *Metall. Trans. A* **1992**, *23*, 3085–3091. [[CrossRef](#)]
6. Varshney, A.; Sangal, S.; Kundu, S.; Mondal, K. Super strong and highly ductile low alloy multiphase steels consisting of bainite, ferrite and retained austenite. *Mater. Des.* **2016**, *95*, 75–88. [[CrossRef](#)]
7. Harjo, S.; Tsuchida, N.; Abe, J.; Gong, W. Martensite phase stress and the strengthening mechanism in TRIP steel by neutron diffraction. *Sci. Rep.* **2017**, *7*, 15149. [[CrossRef](#)] [[PubMed](#)]
8. Tsuchida, N.; Tomota, Y. A micromechanic modeling for transformation induced plasticity in steels. *Mater. Sci. Eng. A* **2000**, *285*, 345–352. [[CrossRef](#)]

9. Matsumura, O.; Sakuma, Y.; Ishii, Y.; Zhao, J. Effect of retained austenite on formability of high strength sheet steels. *ISIJ Int.* **1992**, *32*, 1110–1116. [[CrossRef](#)]
10. Matsumura, O.; Sakuma, Y.; Takechi, H. TRIP and its kinetics aspects in austempered 0.4C-1.5Si-0.8Mn steel. *Scr. Mater.* **1987**, *21*, 1301–1306. [[CrossRef](#)]
11. Mukherjee, M.; Mohanty, O.N.; Hashimoto, S.; Hojo, T.; Sugimoto, K. Strain-induced transformation behaviour of retained austenite and tensile properties of TRIP-aided steels with different matrix microstructure. *ISIJ Int.* **2006**, *46*, 316–324. [[CrossRef](#)]
12. Tsuchida, N.; Osaki, K. Effect of strain rate on TRIP effect in a 0.2C-1.5Si-1.2Mn steel. *Tetsu-to-Hagane* **2013**, *99*, 524–531. (In Japanese) [[CrossRef](#)]
13. Tamura, I. Deformation-induced martensitic transformation and transformation-induced plasticity in steels. *Met. Sci.* **1982**, *16*, 245–253. [[CrossRef](#)]
14. Tsuchida, N.; Morimoto, Y.; Tonan, T.; Shibata, Y.; Fukaura, K.; Ueji, R. Stress-induced martensitic transformation behaviors at various temperatures and their TRIP effects in SUS304 metastable austenitic stainless steel. *ISIJ Int.* **2011**, *51*, 124–129. [[CrossRef](#)]
15. Tsuchida, N.; Yamaguchi, Y.; Morimoto, Y.; Tonan, T.; Takagi, Y.; Ueji, R. Effects of temperature and strain rate on TRIP effect in SUS301L metastable austenitic stainless steel. *ISIJ Int.* **2013**, *53*, 1881–1887. [[CrossRef](#)]
16. Tomota, Y.; Tokuda, H.; Adachi, Y.; Wakita, M.; Minakawa, N.; Moriai, A.; Morii, Y. Tensile behavior of TRIP-aided multi-phase steels studied by *in situ* neutron diffraction. *Acta Mater.* **2004**, *52*, 5737–5745. [[CrossRef](#)]
17. Yamashita, T.; Morooka, S.; Harjo, S.; Kawasaki, T.; Koga, N.; Umezawa, O. Role of retained austenite in low alloy steel at low temperature monitored by neutron diffraction. *Scripta Mater.* **2020**, *117*, 6–10. [[CrossRef](#)]
18. Tsuchida, N.; Nagahisa, N.; Harjo, S. Room-temperature creep tests under constant load on a TRIP-aided multi-microstructure steel. *Mater. Sci. Eng. A* **2017**, *700*, 631–636. [[CrossRef](#)]
19. Lamari, M.; Allain, S.Y.P.; Geandier, G.; Hell, J.-C.; Perlade, A.; Zhu, K. In situ determination of phase stress states in an unstable medium manganese duplex steel studied by high-energy X-ray diffraction. *Metals* **2020**, *10*, 1335.
20. Tsuchida, N.; Tanaka, T.; Toji, Y. Effect of deformation temperature on mechanical properties in 1-GPa-grade TRIP steels with different retained austenite morphologies. *ISIJ Int.* **2021**, *61*, 564–571. [[CrossRef](#)]
21. Saleh, A.A.; Pereloma, E.V.; Clausen, B.; Brown, D.W.; Tomé, C.N.; Gazder, A.A. On the evolution and modelling of lattice strains during the cyclic loading of TWIP steel. *Acta Mater.* **2013**, *61*, 5247–5262. [[CrossRef](#)]
22. Han, H.N.; Suh, D.-W. A model for transformation plasticity during bainite transformation of steel under external stress. *Acta Mater.* **2003**, *51*, 4907–4917. [[CrossRef](#)]
23. Tsuchida, N.; Ueji, R.; Inoue, T. Effect of temperature on stress–strain curve in SUS316L metastable austenitic stainless steel studied by *in situ* neutron diffraction experiments. *ISIJ Int.* **2021**, *61*, 632–640. [[CrossRef](#)]
24. Vasiliakos, A.N.; Papamantellos, K.; Haidemenopoulos, G.N.; Bleck, W. Experimental determination of the stability of retained austenite in low alloy TRIP steels. *Steel Res.* **1999**, *70*, 466–471. [[CrossRef](#)]
25. Bolling, G.F.; Richman, R.H. The plastic deformation-transformation of paramagnetic F.C.C. Fe-Ni-C alloys. *Acta Metall.* **1970**, *18*, 673–681. [[CrossRef](#)]
26. Tsuchida, N.; Ishimaru, E.; Kawa, M. Role of deformation-induced martensite in TRIP effect of metastable austenitic steels. *ISIJ Int.* **2021**, *61*, 556–563. [[CrossRef](#)]
27. Jacques, P.J.; Furnemont, Q.; Godet, S.; Pardoën, T.; Conlon, K.T.; Delannay, F. Micromechanical characterisation of TRIP-assisted multiphase steels by *in situ* neutron diffraction. *Philos. Mag.* **2006**, *86*, 2371–2392. [[CrossRef](#)]
28. Muránsky, O.; Šittner, P.; Zrník, J.; Oliver, E.C. *In situ* neutron diffraction investigation of the collaborative deformation–transformation mechanism in TRIP-assisted steels at room and elevated temperatures. *Acta Mater.* **2008**, *56*, 3367–3379. [[CrossRef](#)]
29. Dutta, A.; Ronge, D.; Sandlöbes, S.; Raabe, D. Strain partitioning and strain localization in medium manganese steels measured by *in situ* microscopic digital image correlation. *Materialia* **2019**, *5*, 100252. [[CrossRef](#)]
30. Harjo, S.; Kubota, S.; Gong, W.; Kawasaki, T.; Gao, S. Neutron diffraction monitoring of ductile cast iron under cyclic tension–compression. *Acta Mater.* **2020**, *196*, 584–594. [[CrossRef](#)]
31. Tomota, Y.; Lukáš, P.; Neov, D.; Harjo, S.; Abe, Y.R. *In situ* neutron diffraction during tensile deformation of a ferrite–cementite steel. *Acta Mater.* **2003**, *51*, 805–817. [[CrossRef](#)]
32. Asoo, K.; Tomota, Y.; Harjo, S.; Okitsu, Y. Tensile behavior of a TRIP-aided ultra-fine grained steel studied by neutron diffraction. *ISIJ Int.* **2011**, *51*, 145–150. [[CrossRef](#)]