

貯蔵工学センター立地環境調査  
— 深層ボーリング  
写真集(試験)

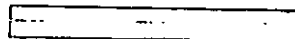
2/5(一軸圧縮試験)

(動力炉・核燃料開発事業団 契約業務報告書)

技術資料		
開示区分	レポート No.	受領日
1	J1027 98-003	1998.7.29

この資料は技術管理室保存資料です  
閲覧には技術資料閲覧票が必要です  
動力炉・核燃料開発事業団 技術協力部技術管理室

1987年9月



複製又はこの資料の入手については、下記にお問い合わせ下さい。

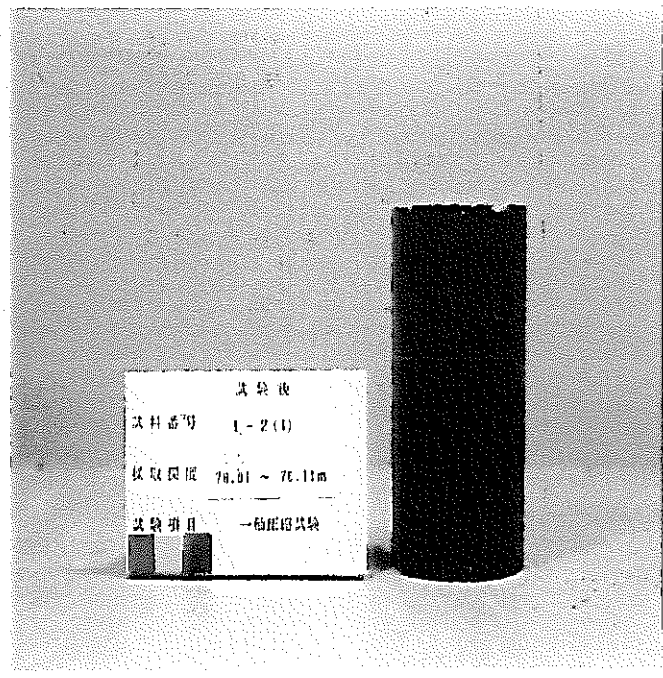
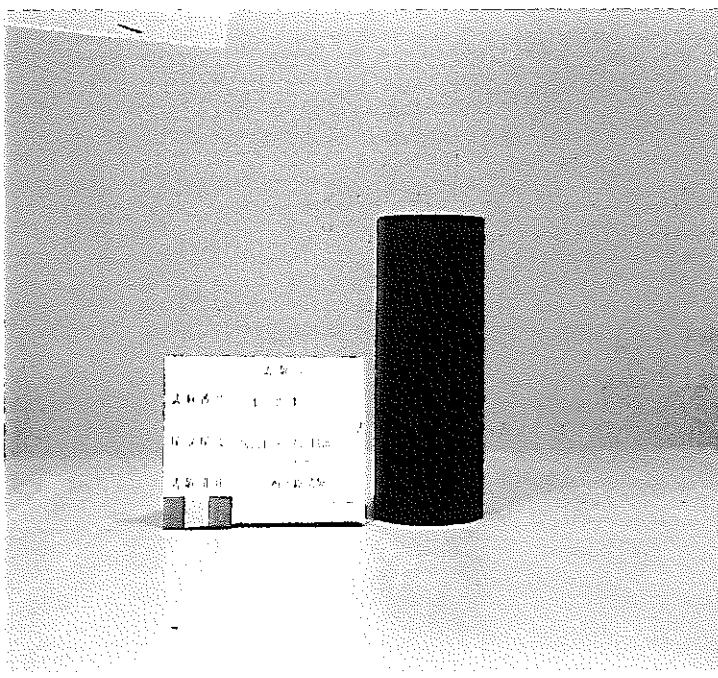
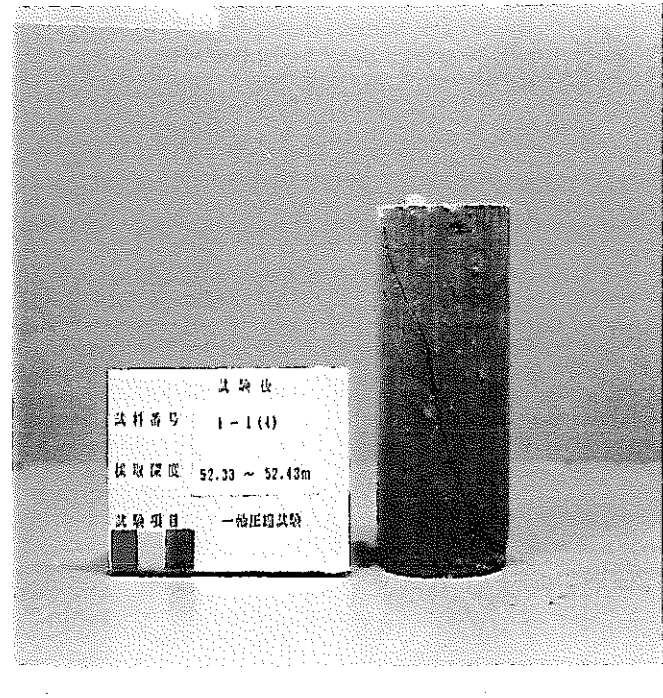
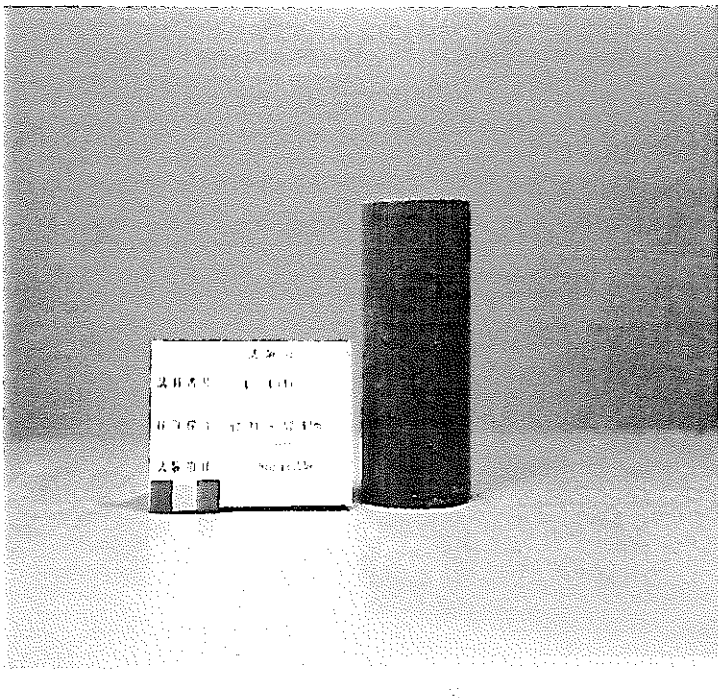
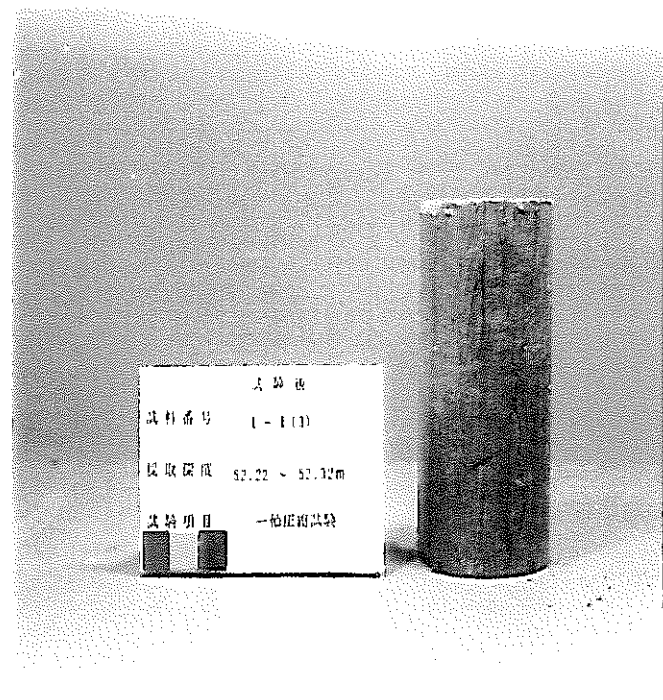
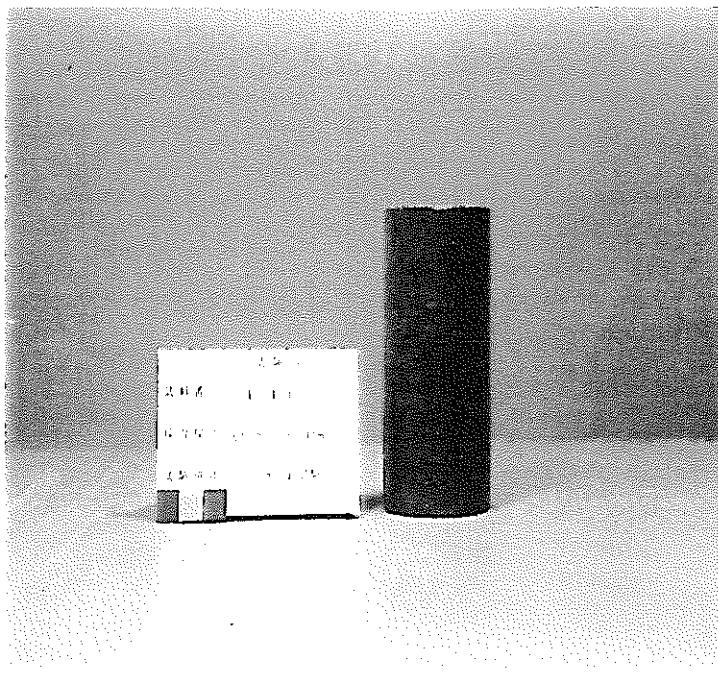
〒107-8445 東京都港区赤坂1-9-13

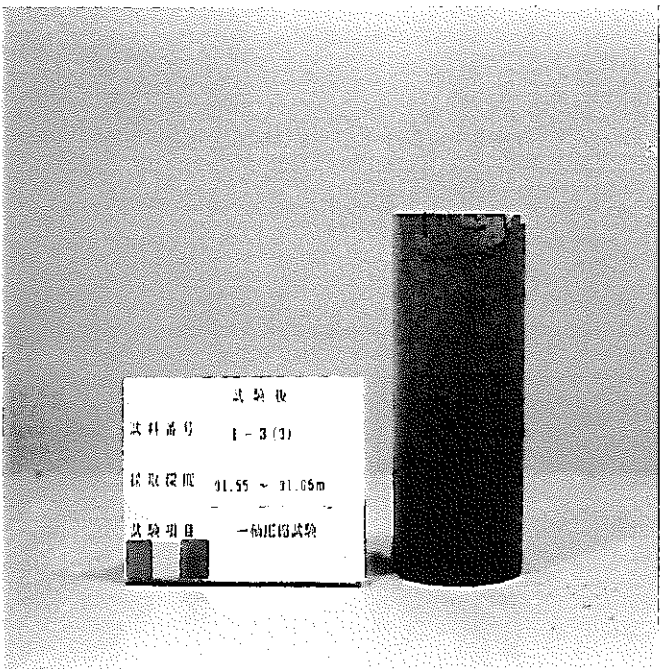
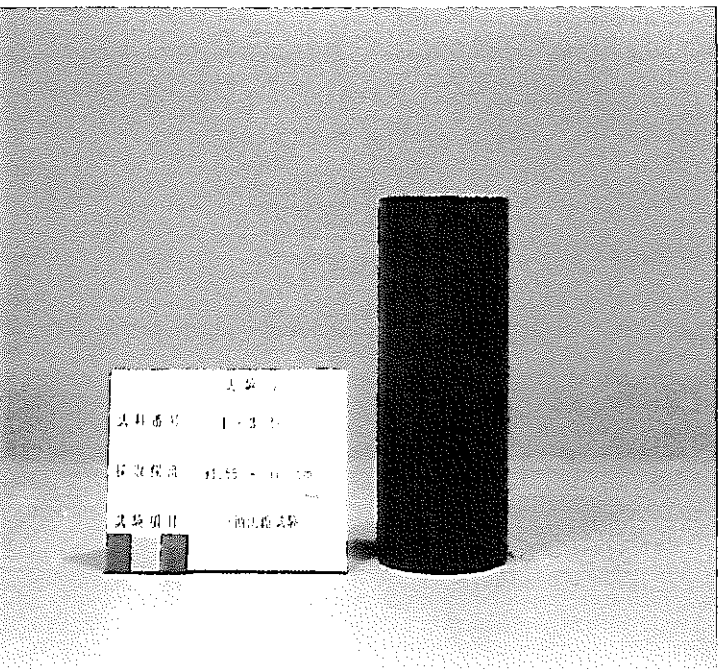
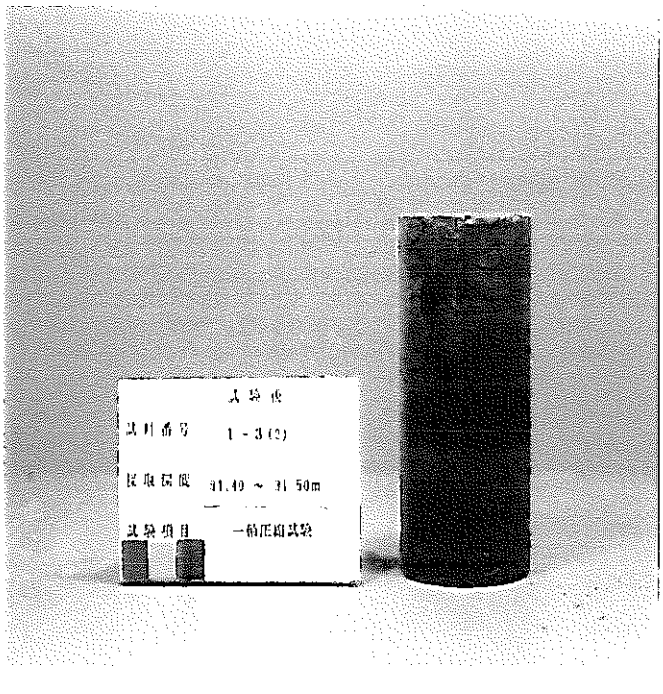
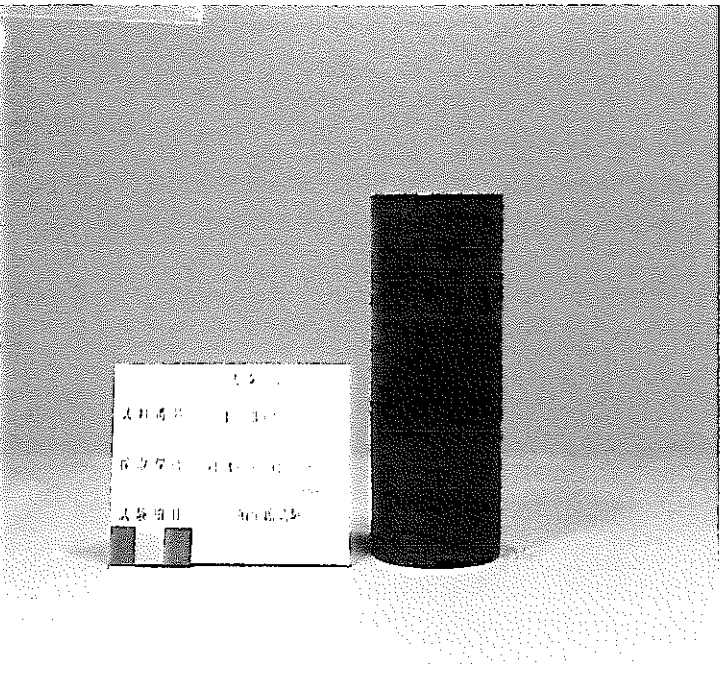
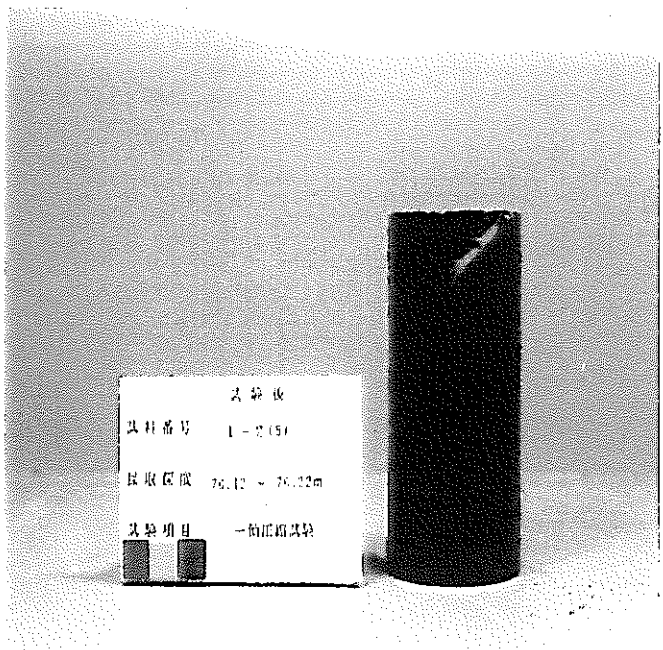
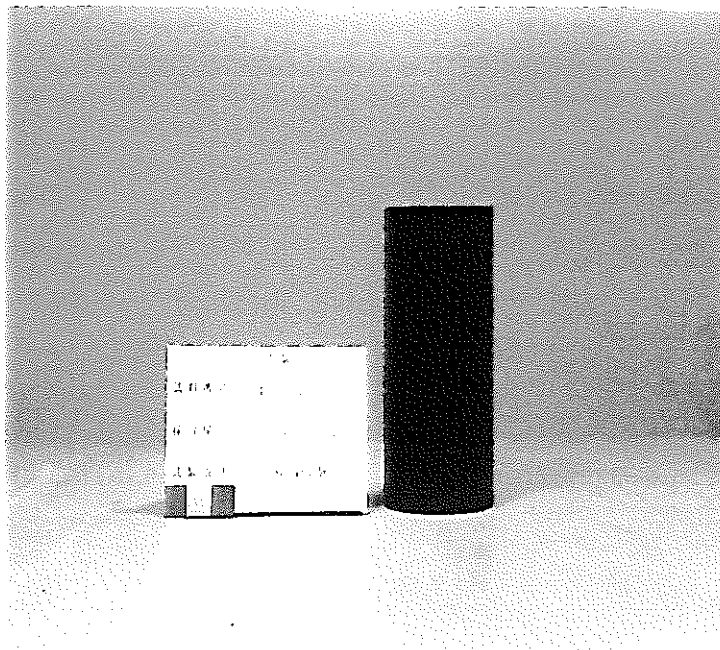
動力炉・核燃料開発事業団

技術協力部 技術管理室

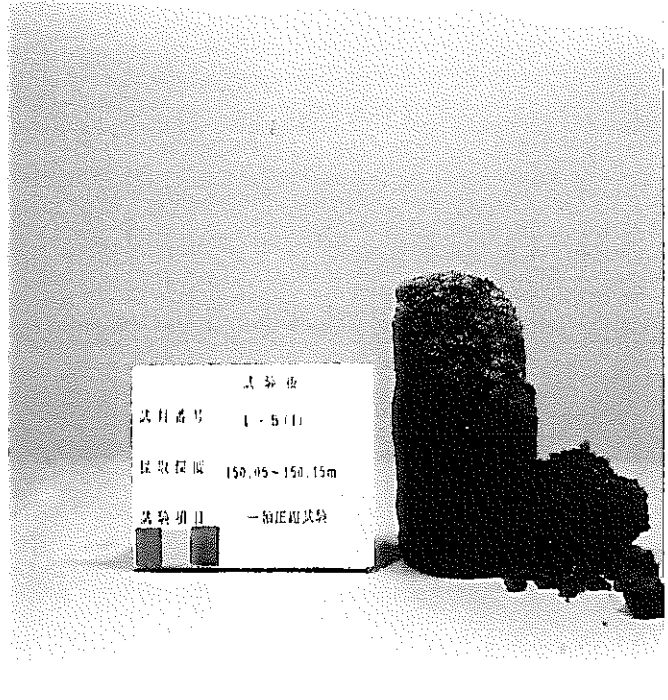
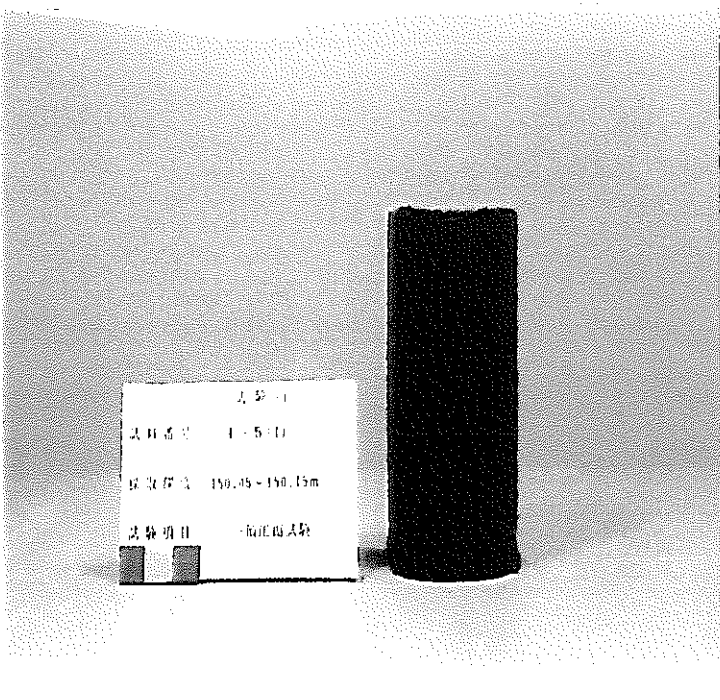
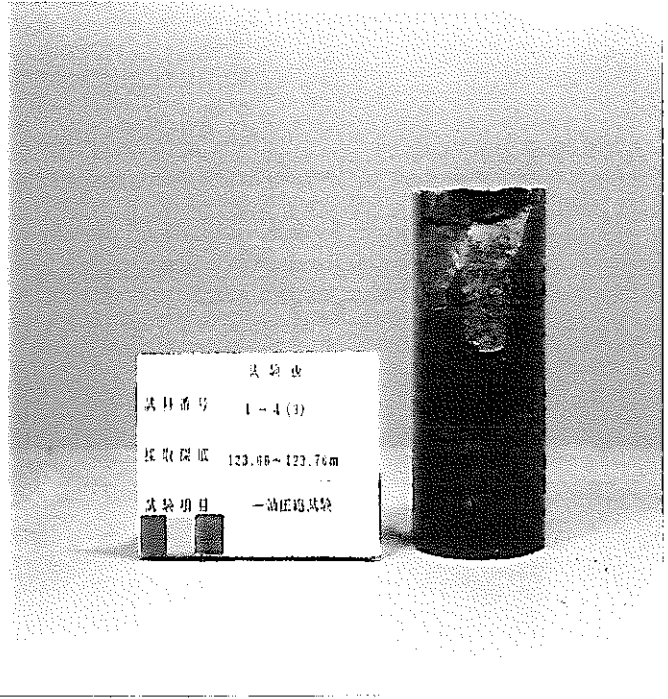
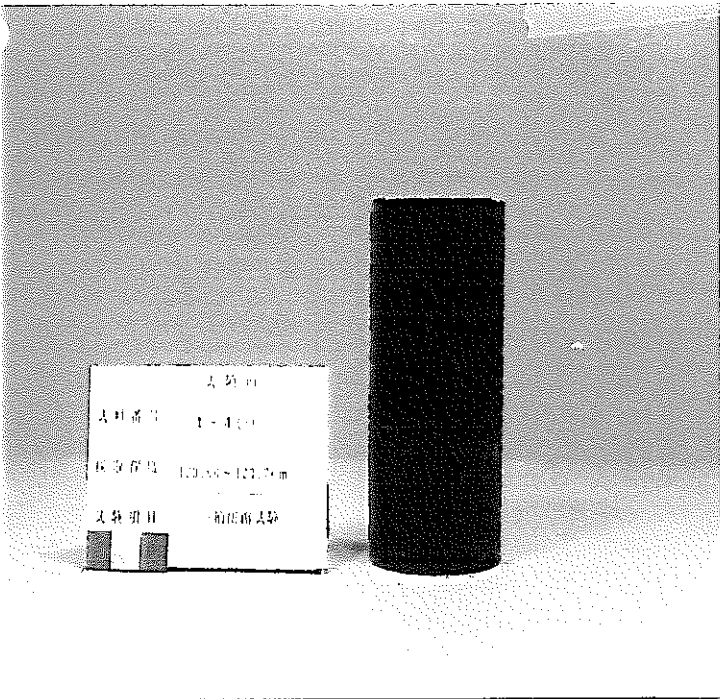
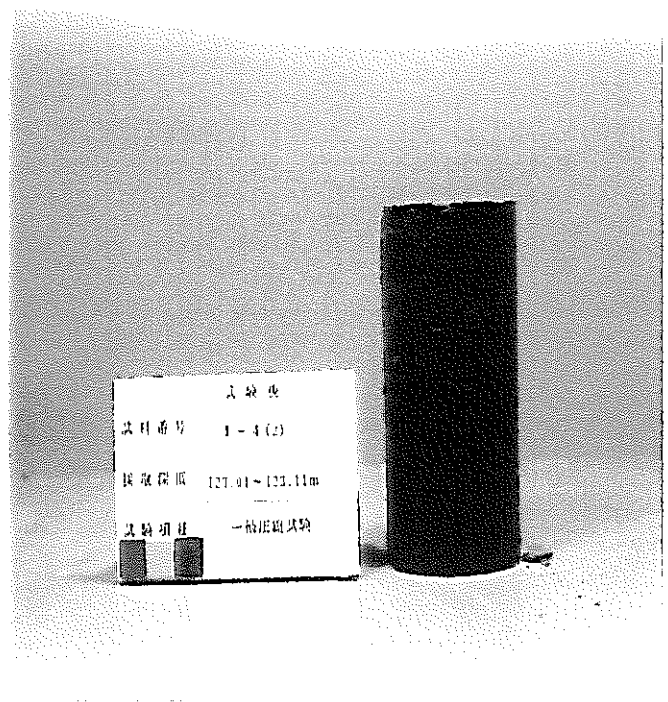
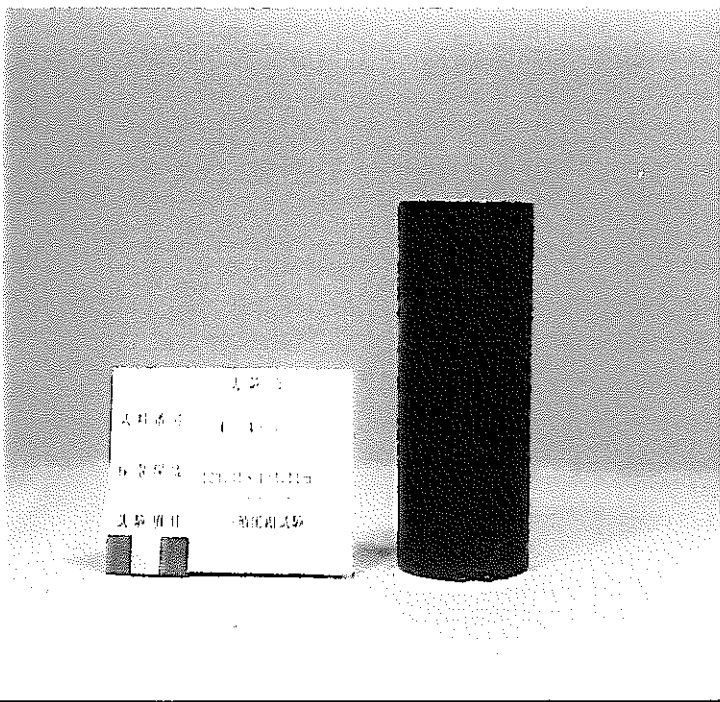
Inquiries about copyright and reproduction should be addressed to: Technical Evaluation and Patent Office, Technology Management Division, Power Reactor and Nuclear Fuel Development Corporation 9-13, 1-chome, Akasaka, Minato-ku, Tokyo 107-8445, Japan

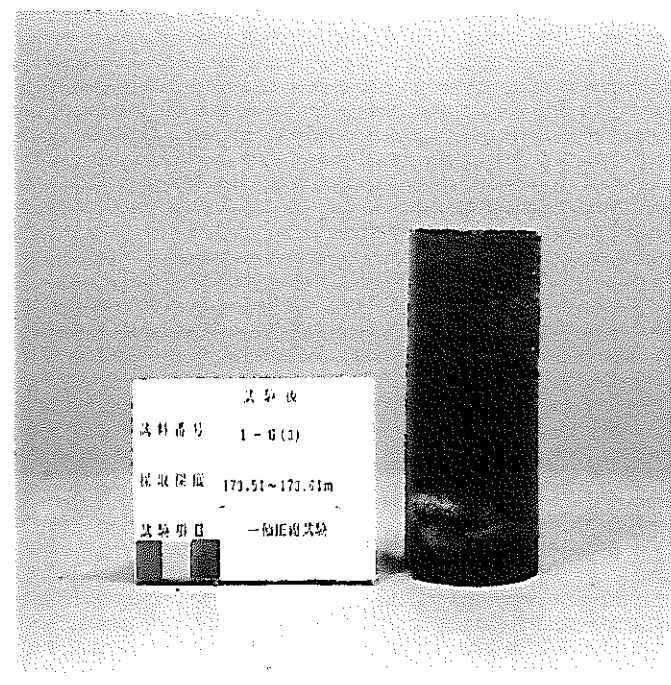
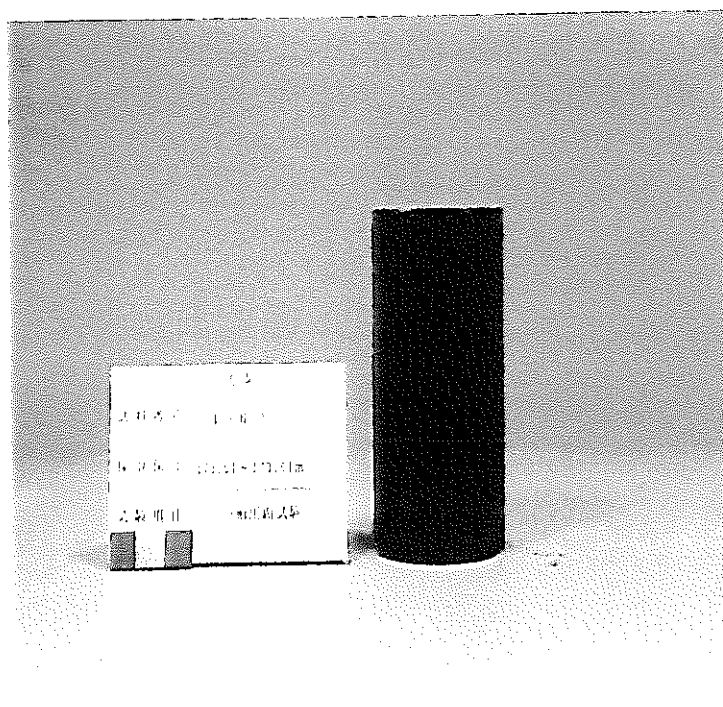
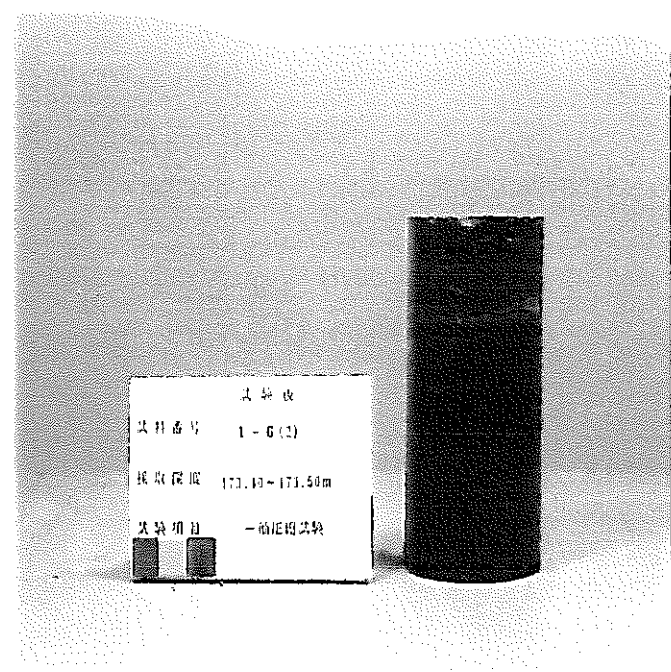
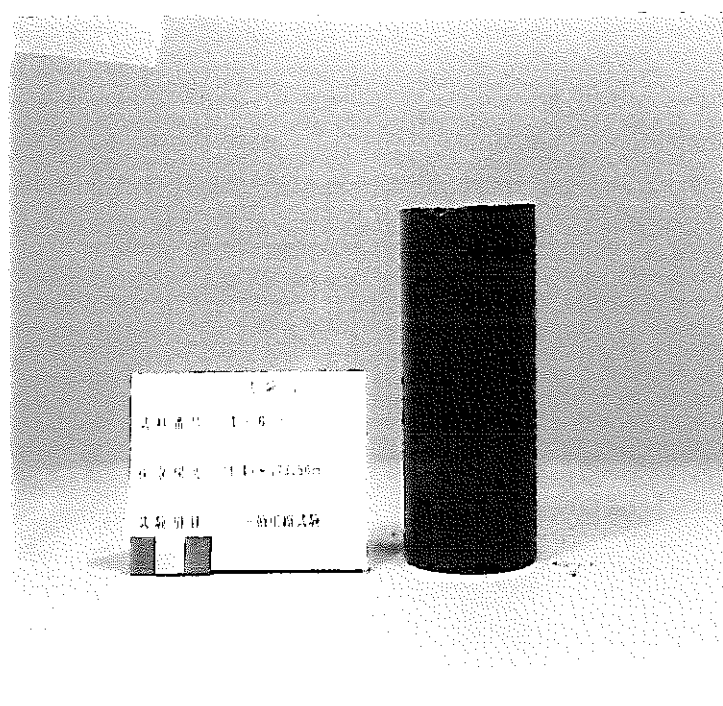
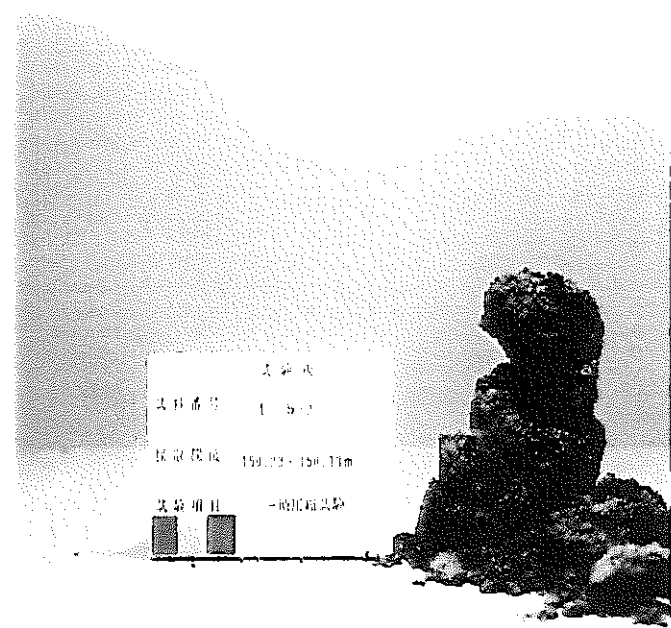
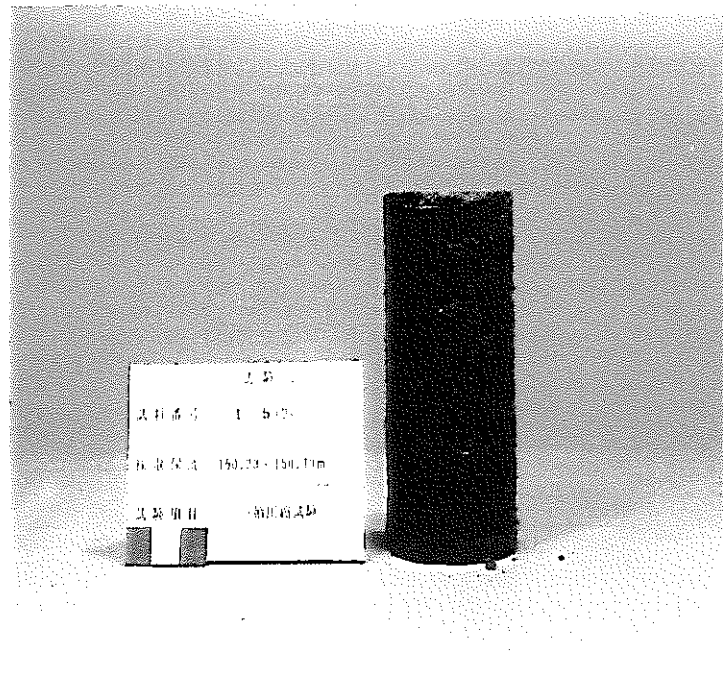
© 動力炉・核燃料開発事業団 (Power Reactor and Nuclear Fuel Development Corporation) 1987



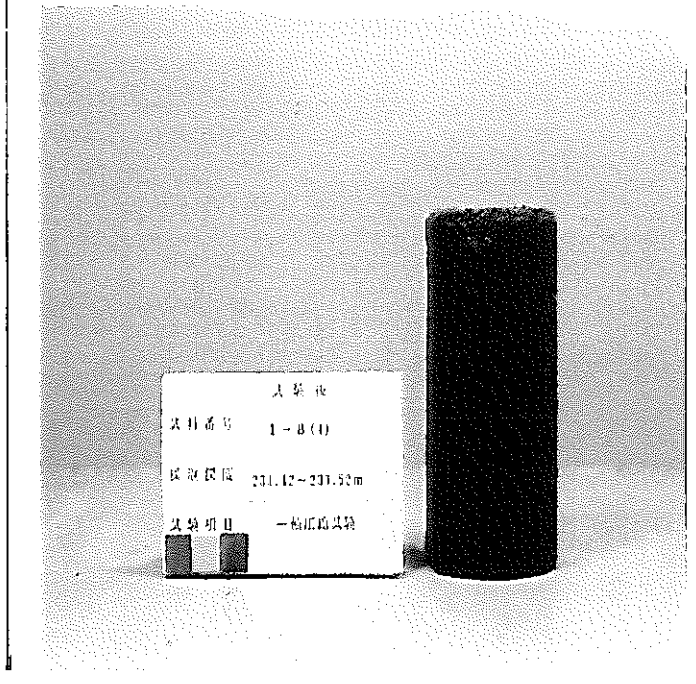
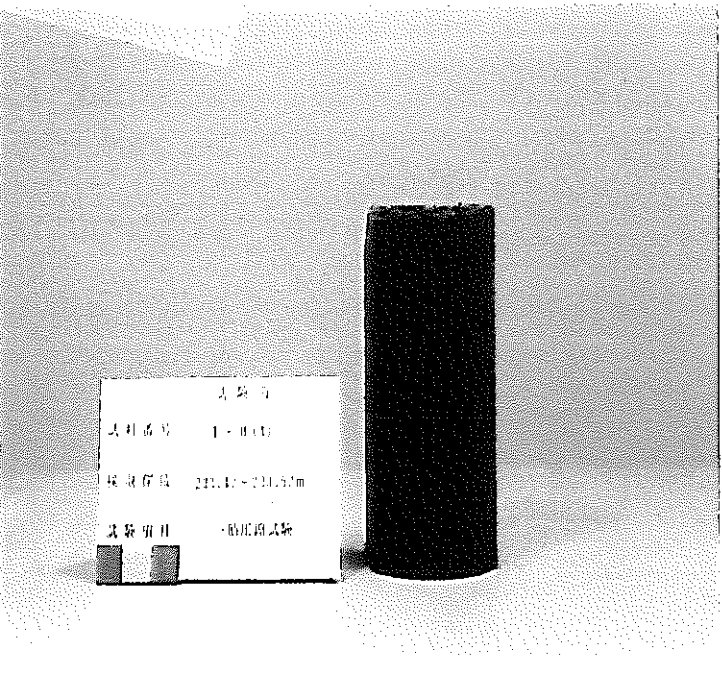
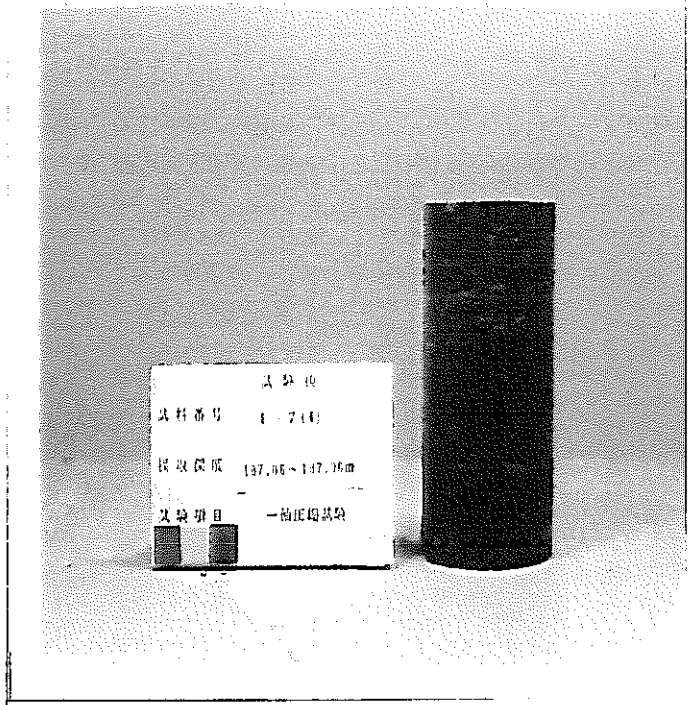
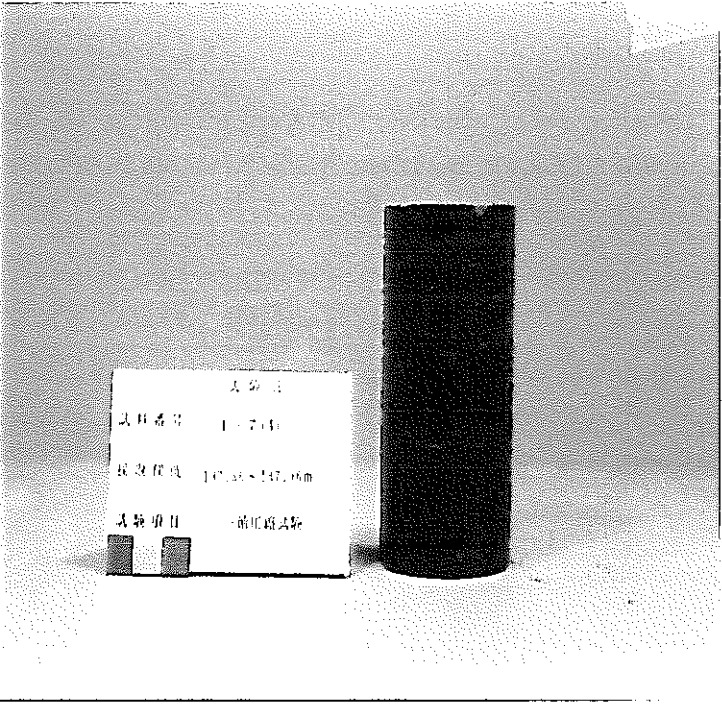
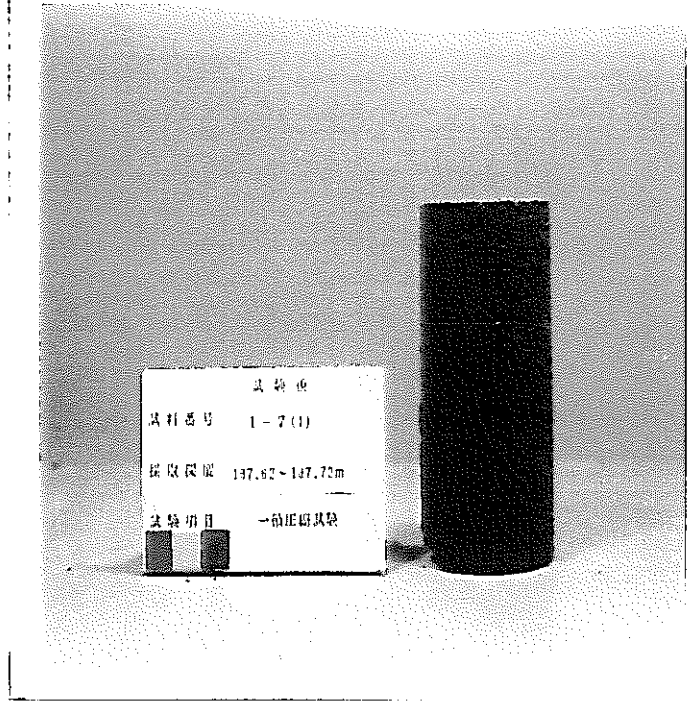
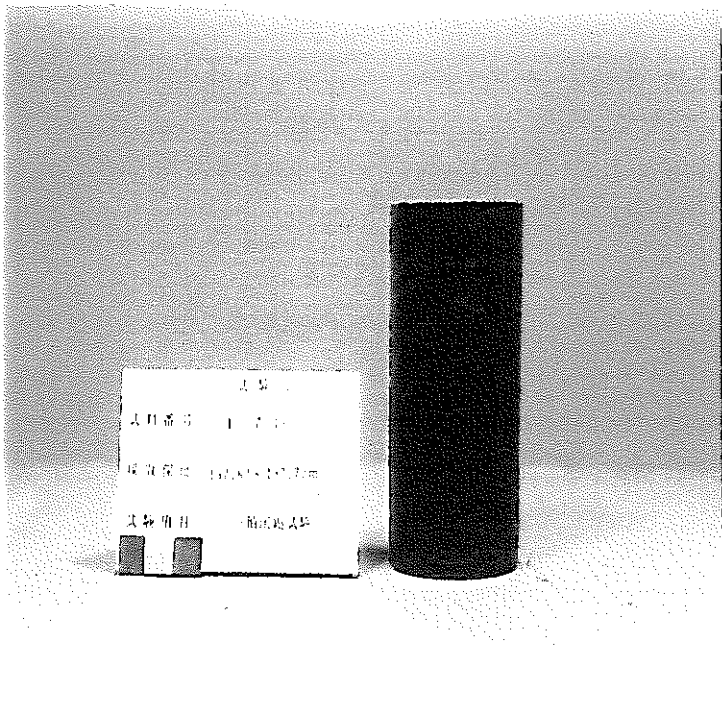


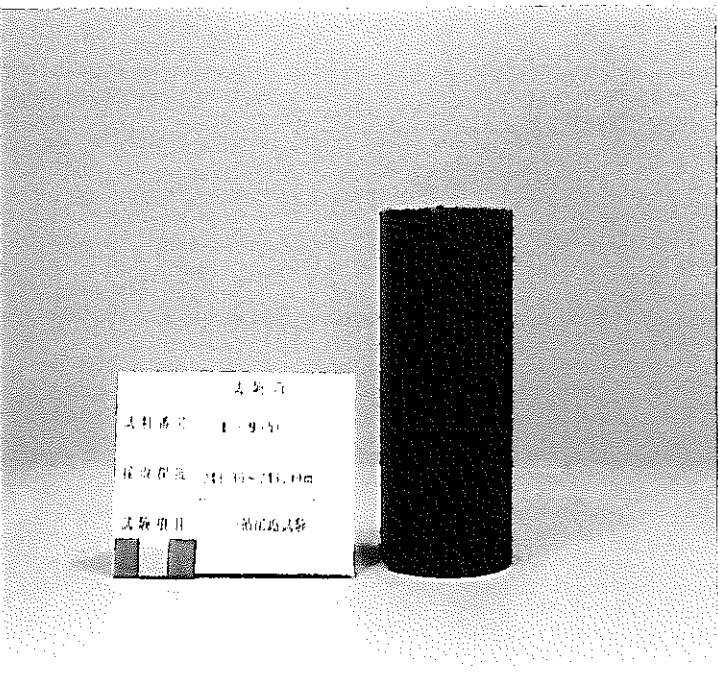
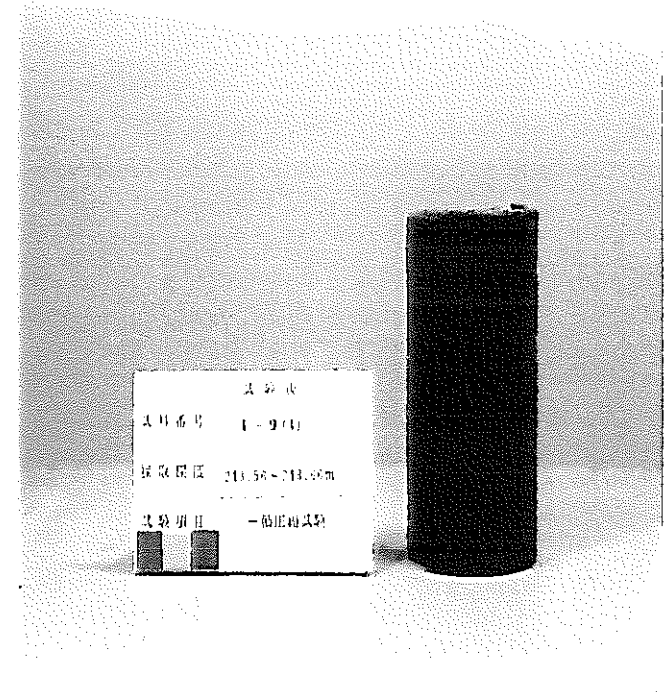
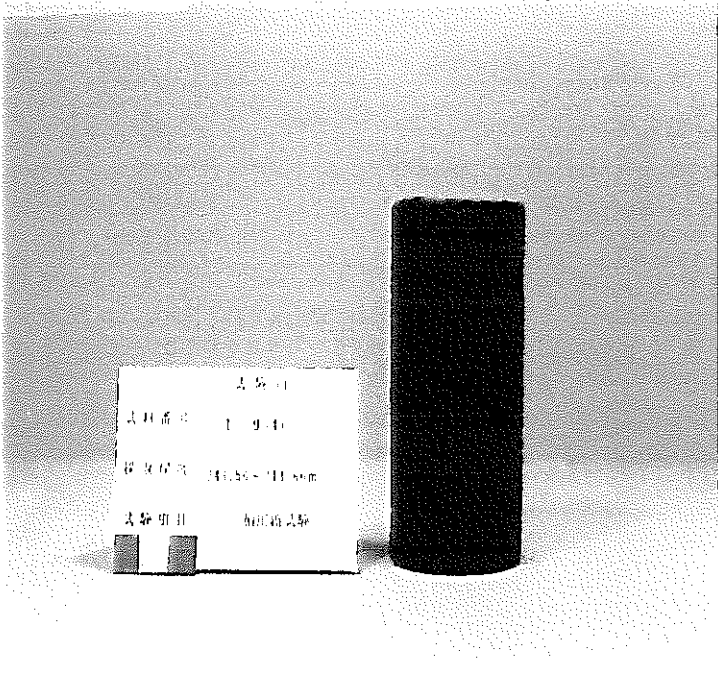
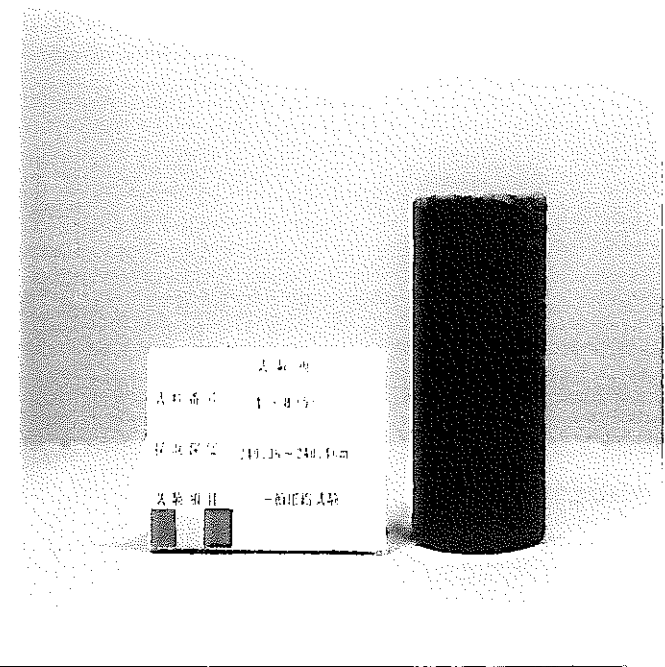
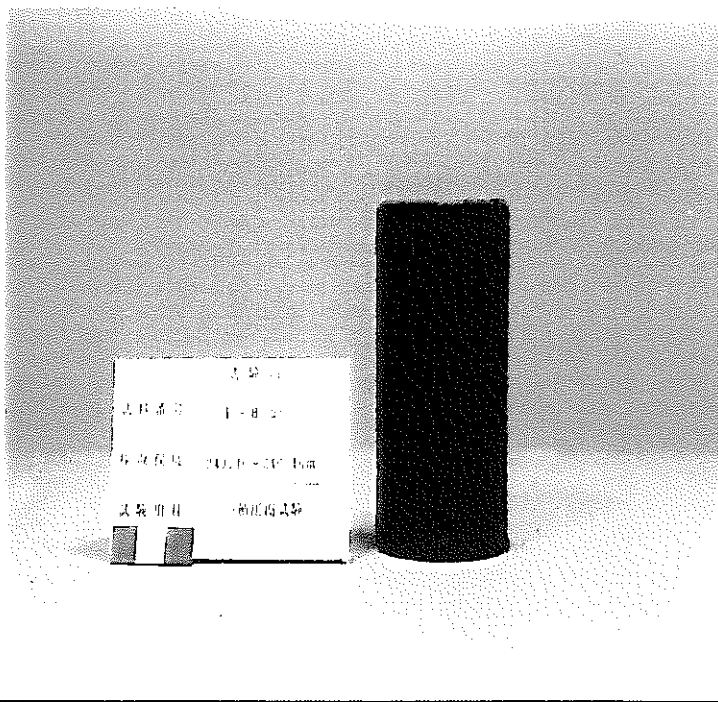






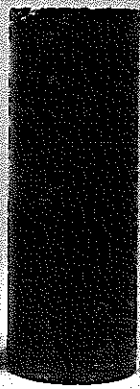




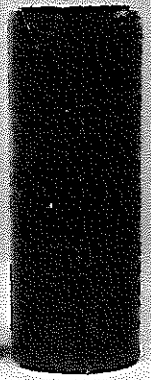




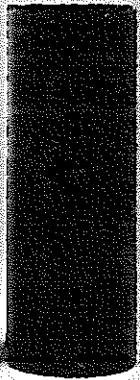
土质  
土样编号 1-10(4)  
采样深度 274.00~274.10m  
试验项目 一般物理试验



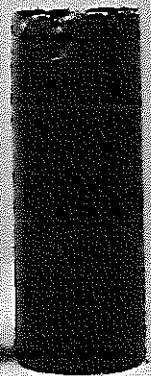
土质  
土样编号 1-10(4)  
采样深度 274.00~274.10m  
试验项目 一般物理试验



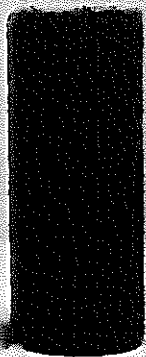
土质  
土样编号 1-10(4)  
采样深度 274.10~274.20m  
试验项目 一般物理试验



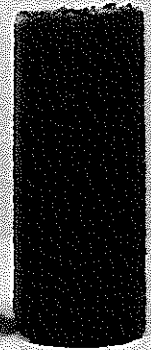
土质  
土样编号 1-10(4)  
采样深度 274.10~274.20m  
试验项目 一般物理试验

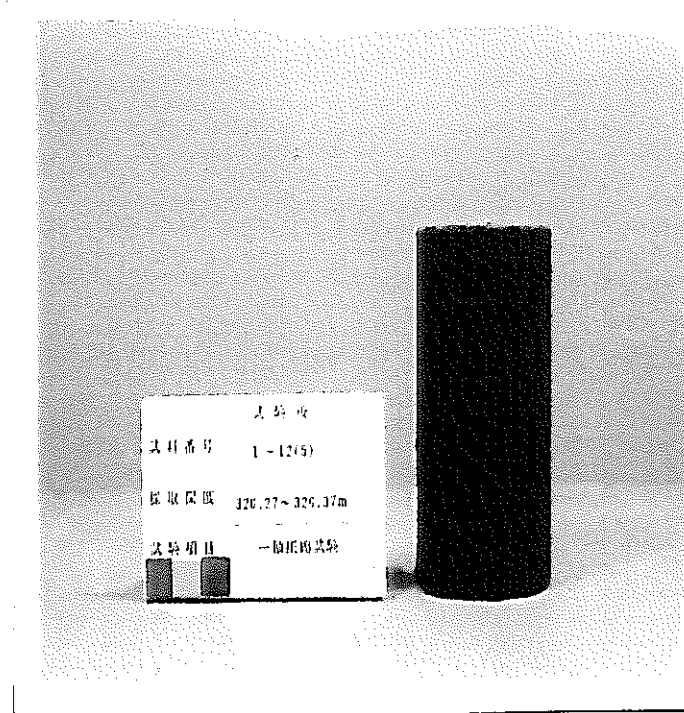
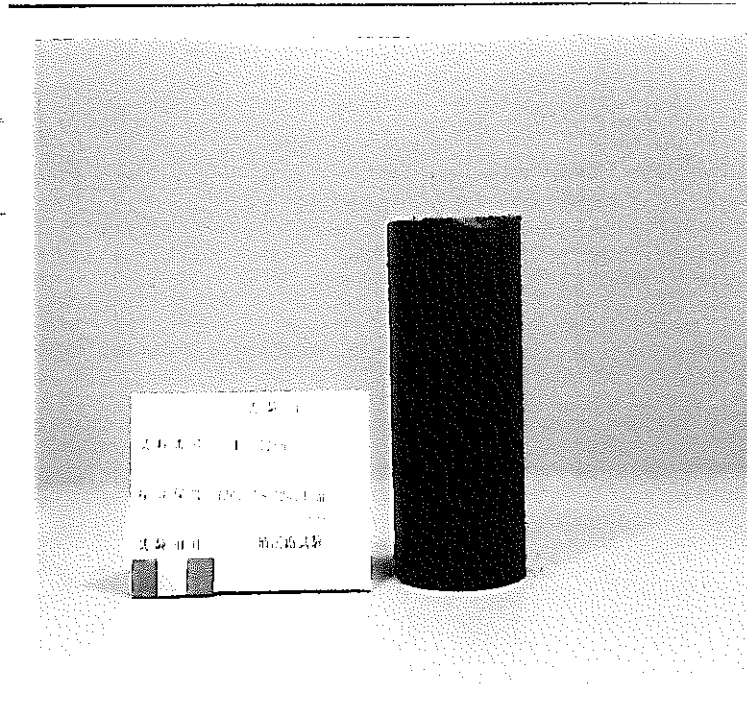
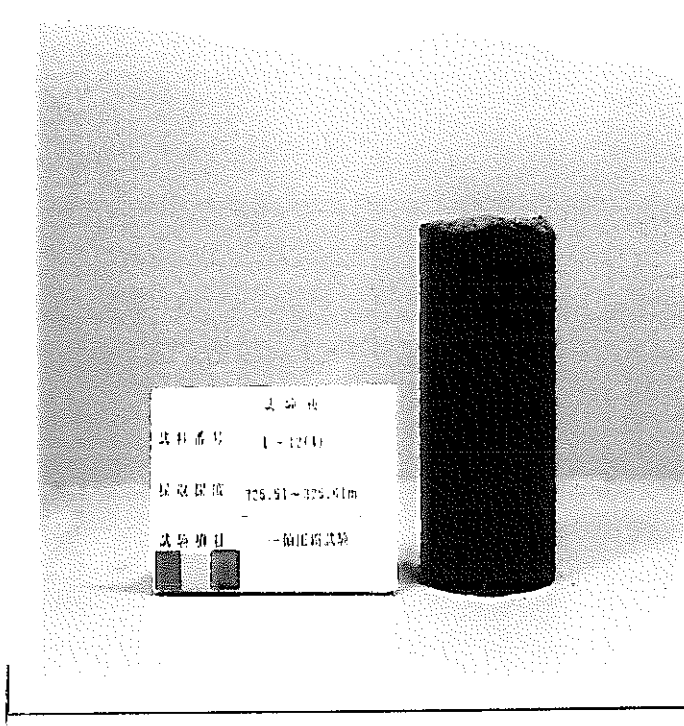
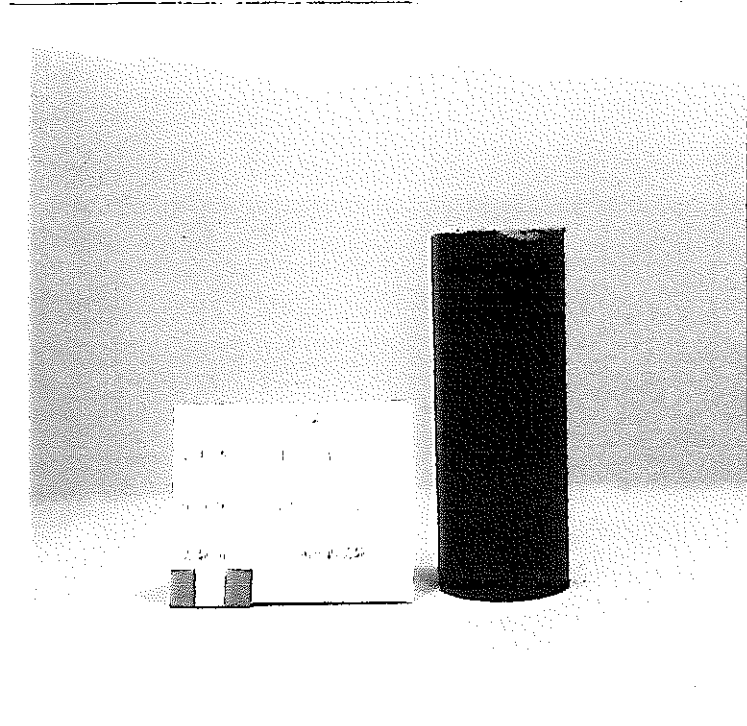
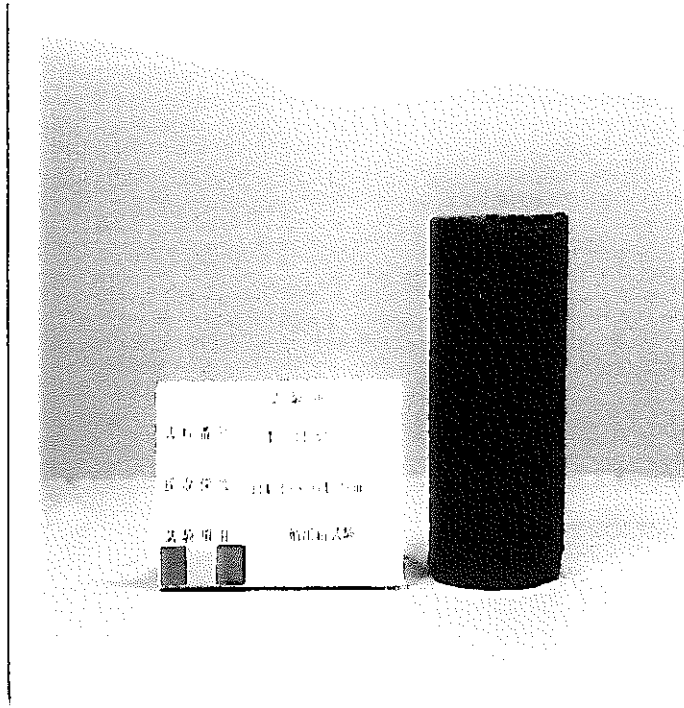
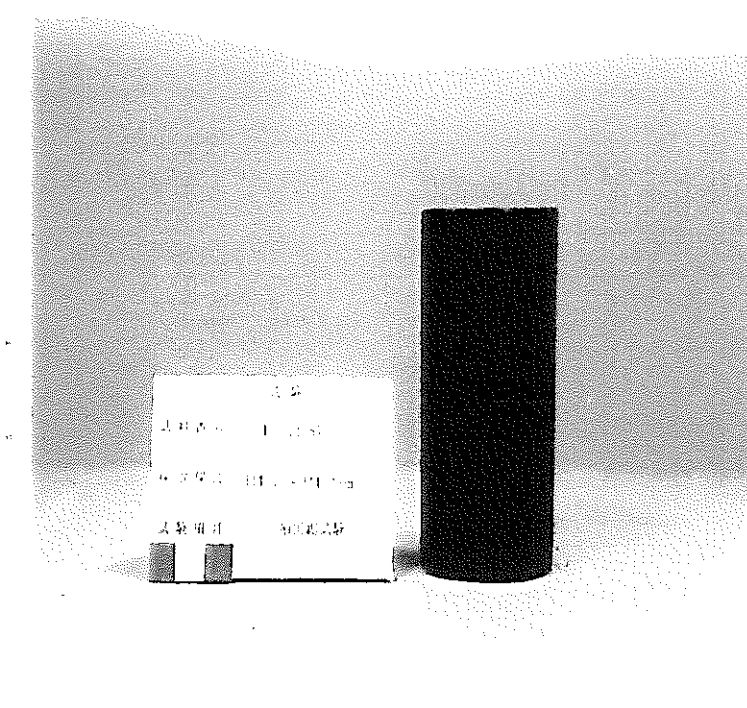


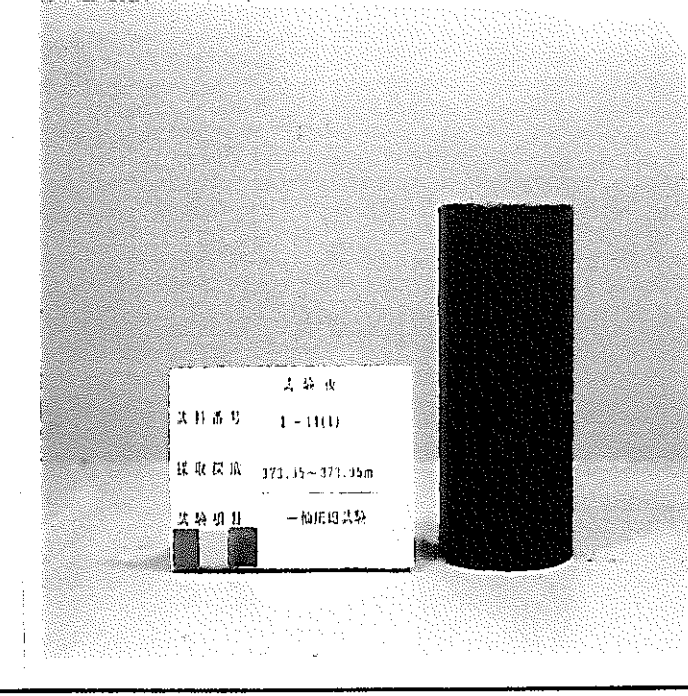
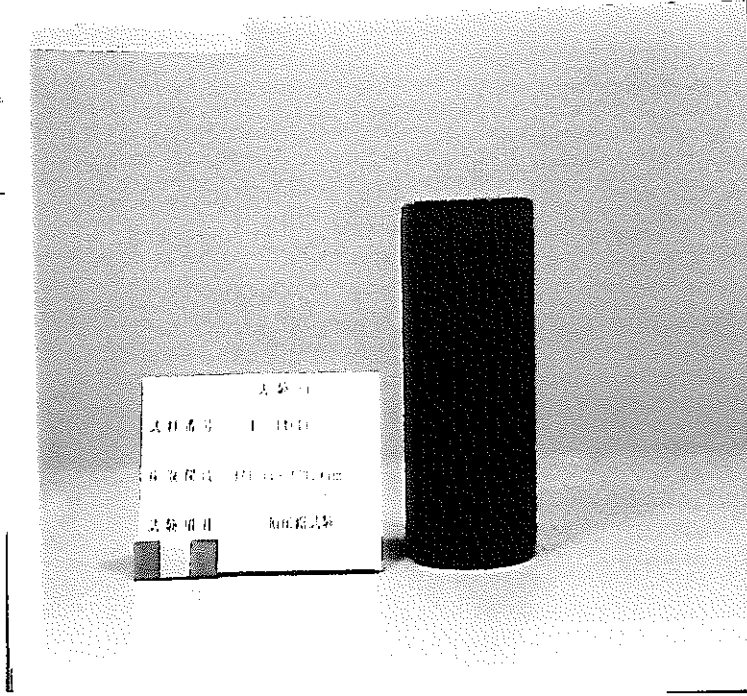
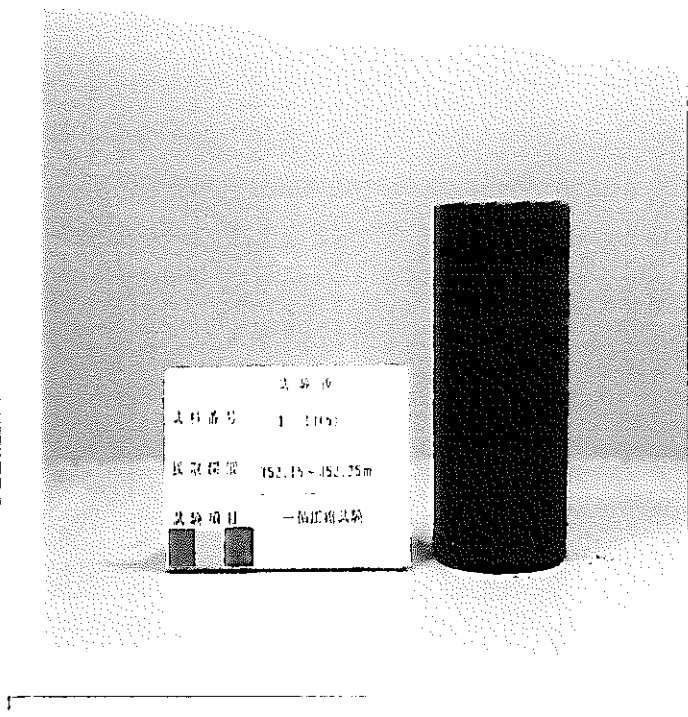
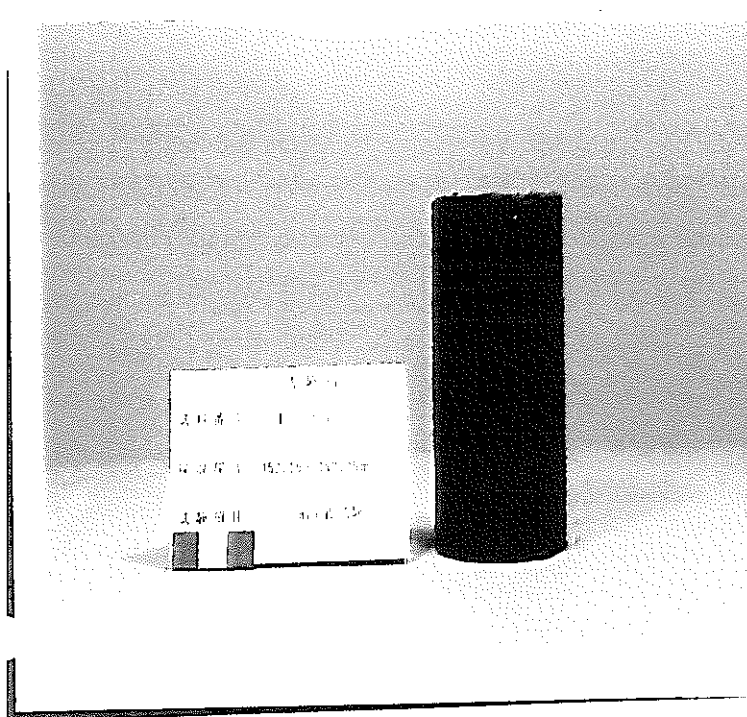
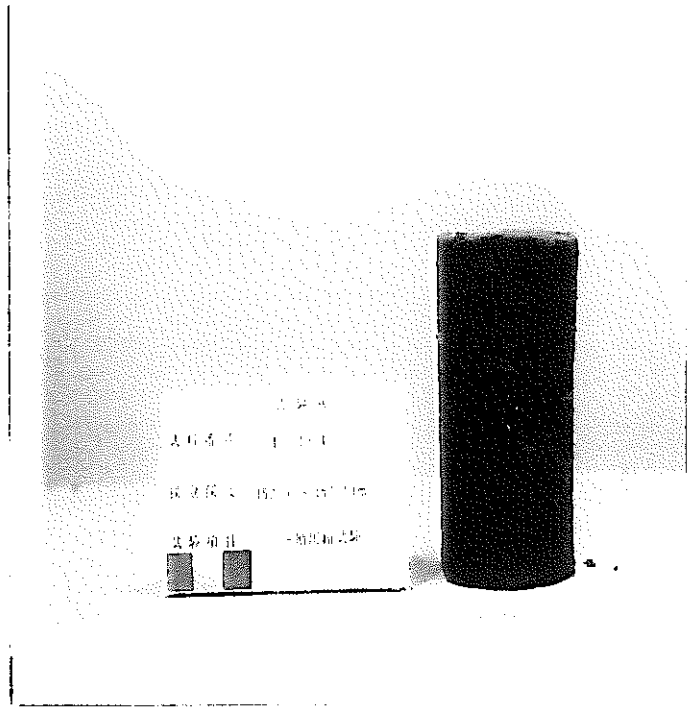
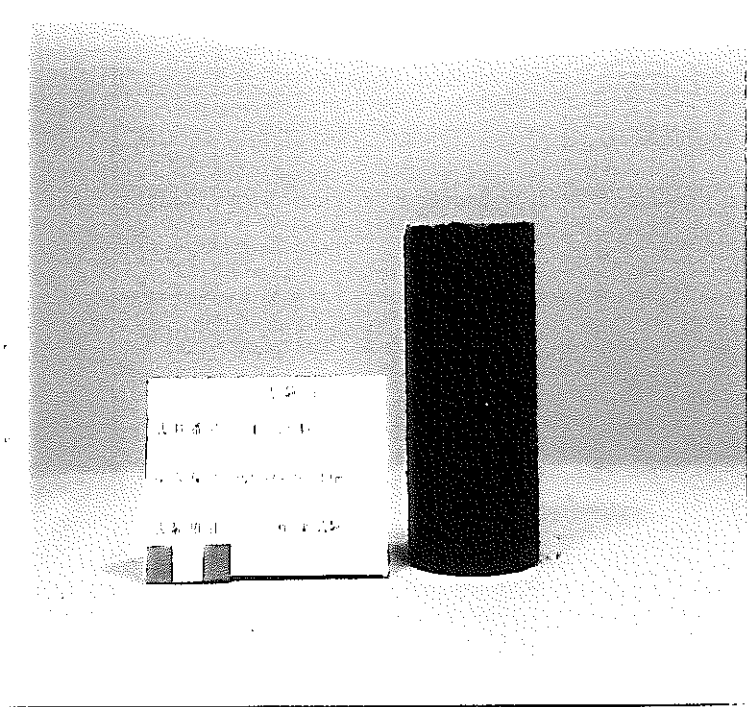
土质  
土样编号 1-10(4)  
采样深度 314.07~314.17m  
试验项目 一般物理试验



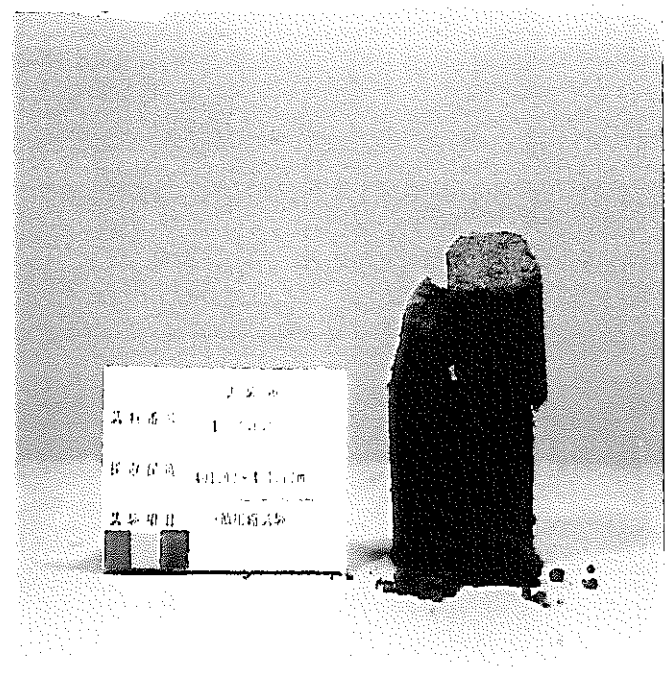
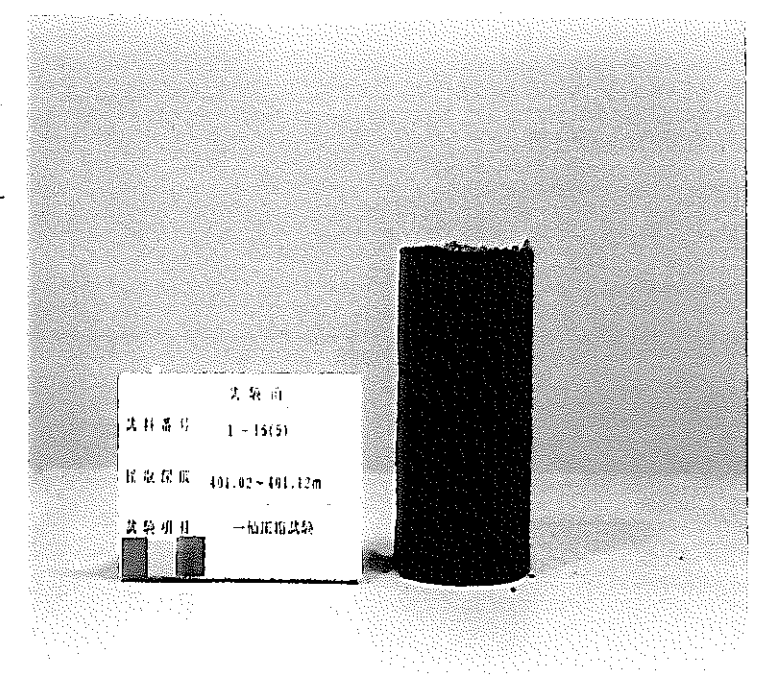
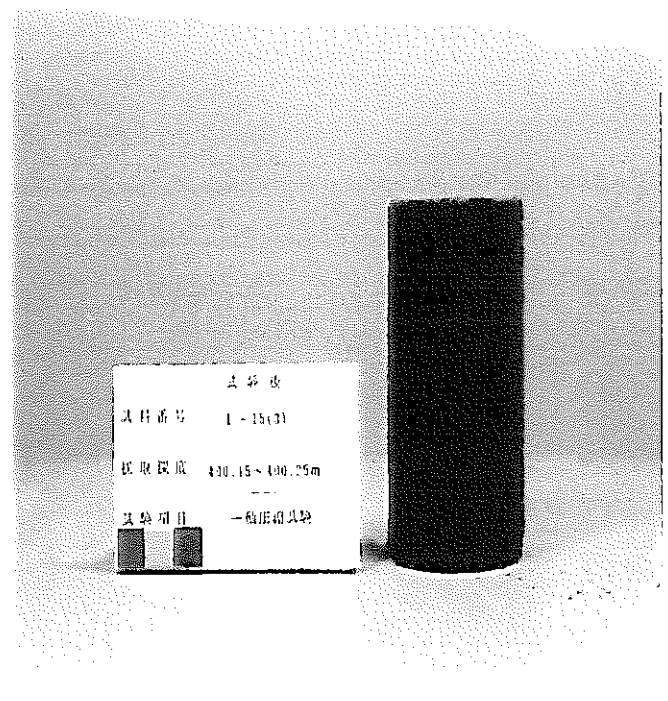
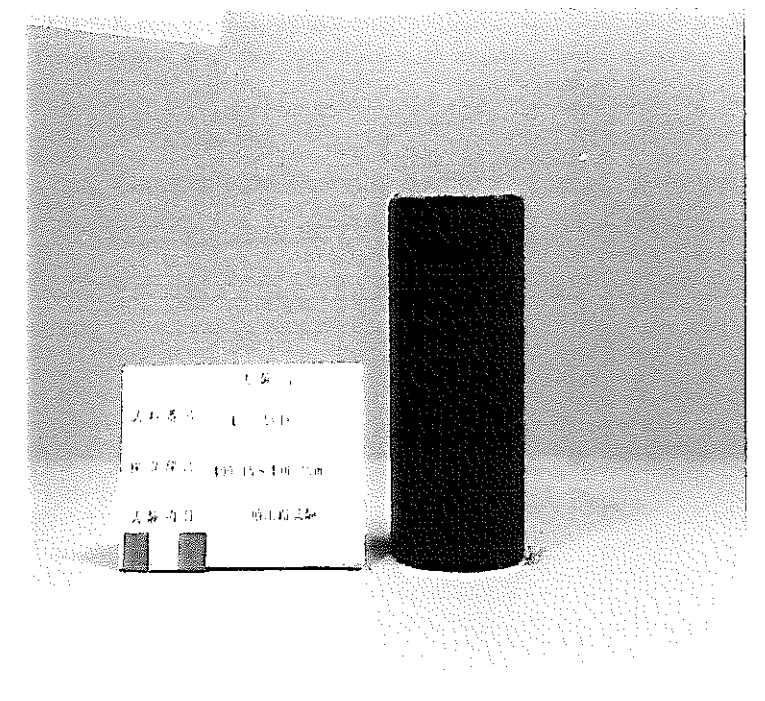
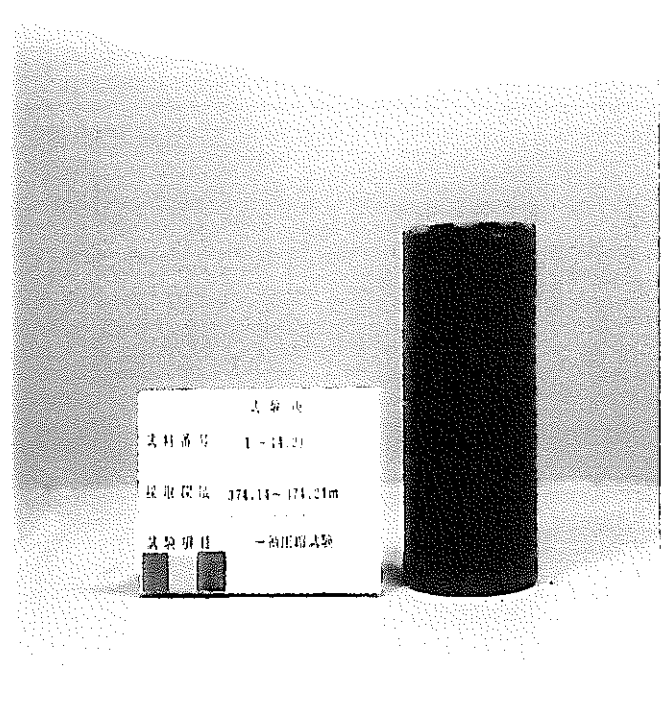
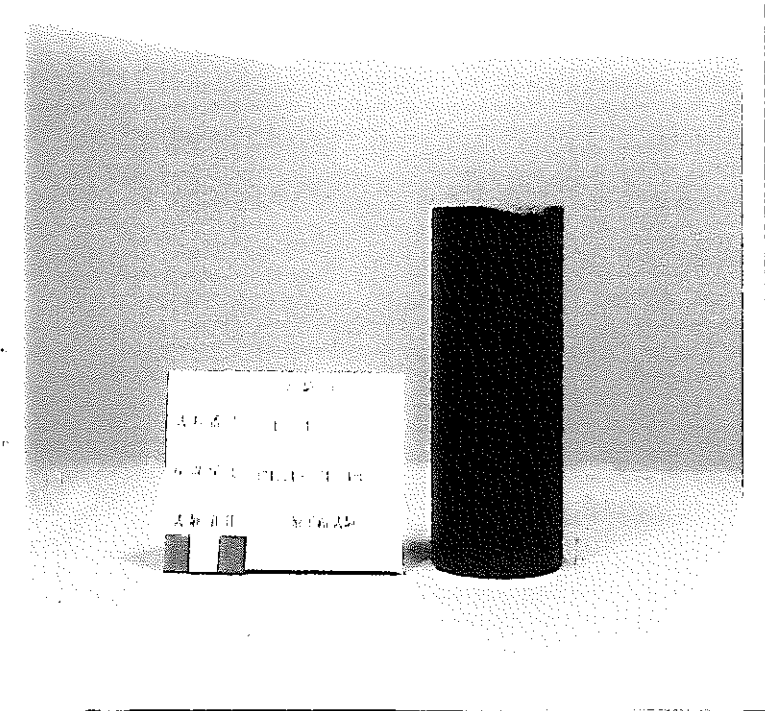
土质  
土样编号 1-10(4)  
采样深度 314.07~314.17m  
试验项目 一般物理试验



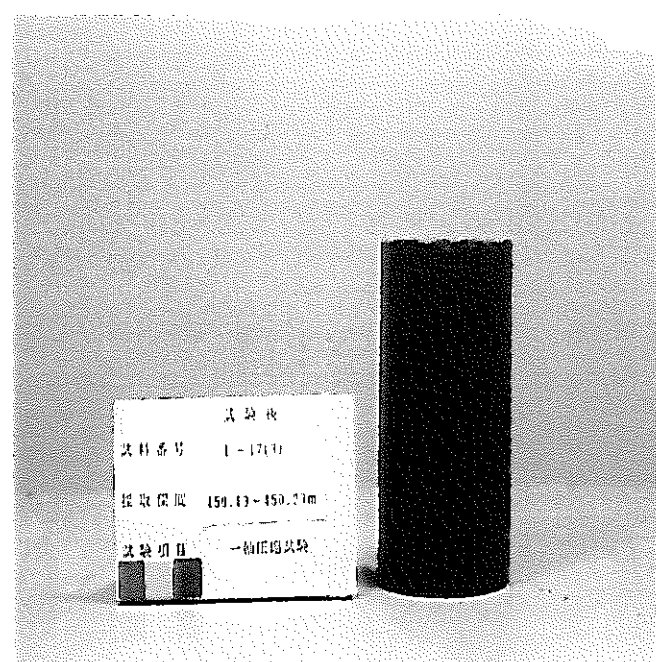
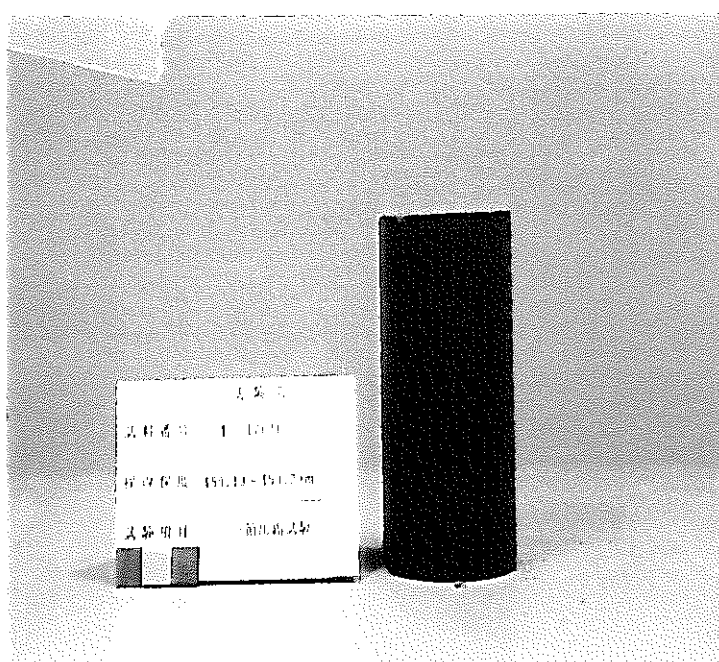
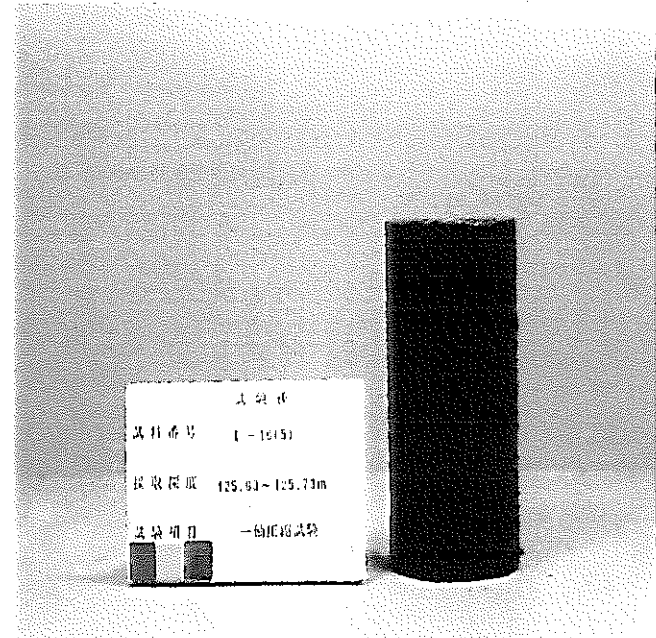
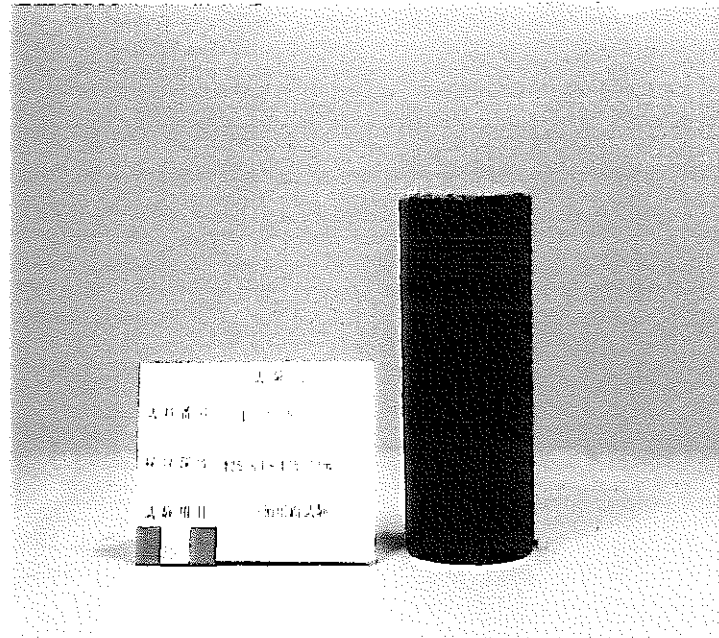
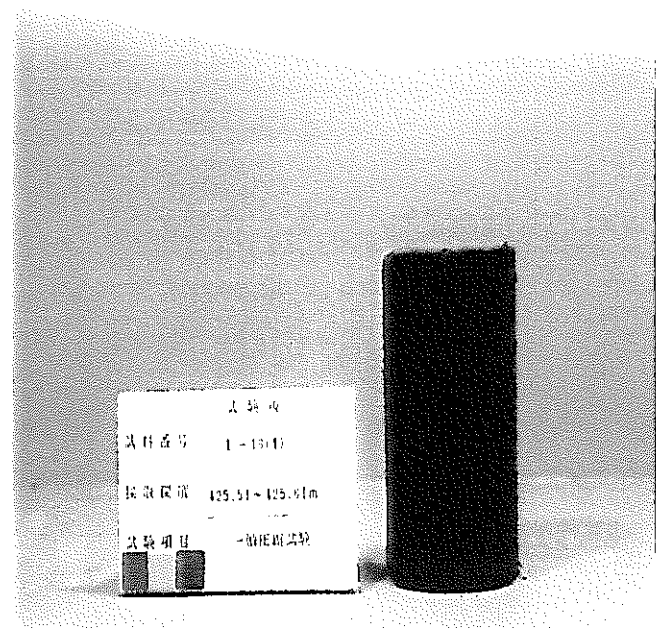
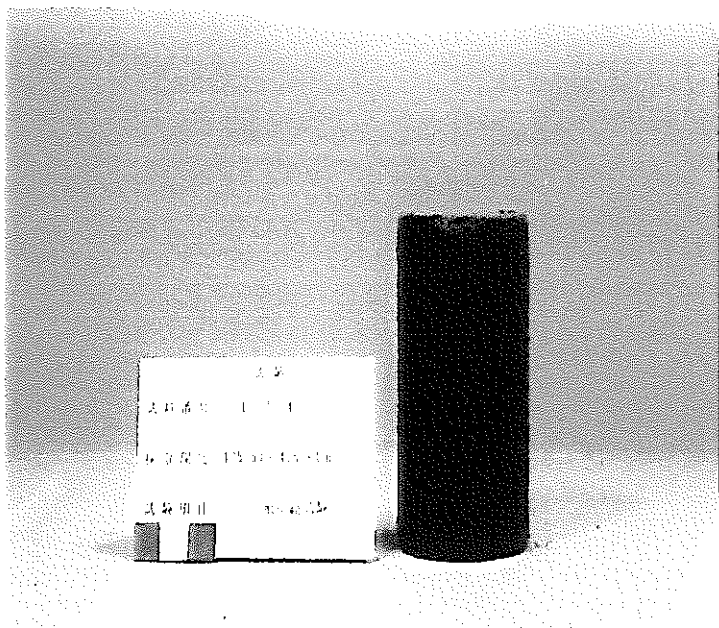




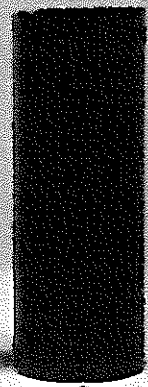




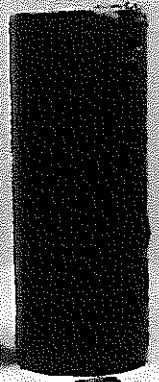




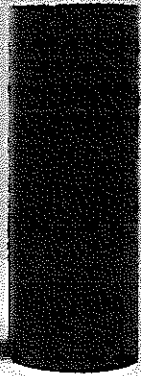
試驗號  
試料番号 1-12(3)  
採取深度 450.36~450.45m  
試驗項目 一軸圧縮試験



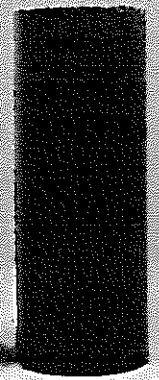
試驗號  
試料番号 1-12(4)  
採取深度 450.36~450.45m  
試驗項目 一軸圧縮試験



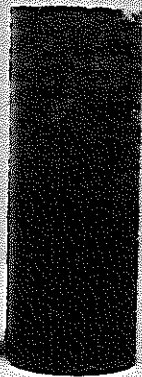
試驗號  
試料番号 1-12(5)  
採取深度 475.44~475.53m  
試驗項目 一軸圧縮試験



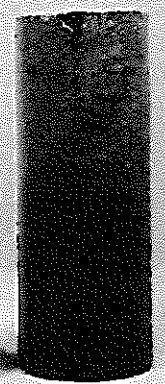
試驗號  
試料番号 1-12(6)  
採取深度 475.44~475.53m  
試驗項目 一軸圧縮試験



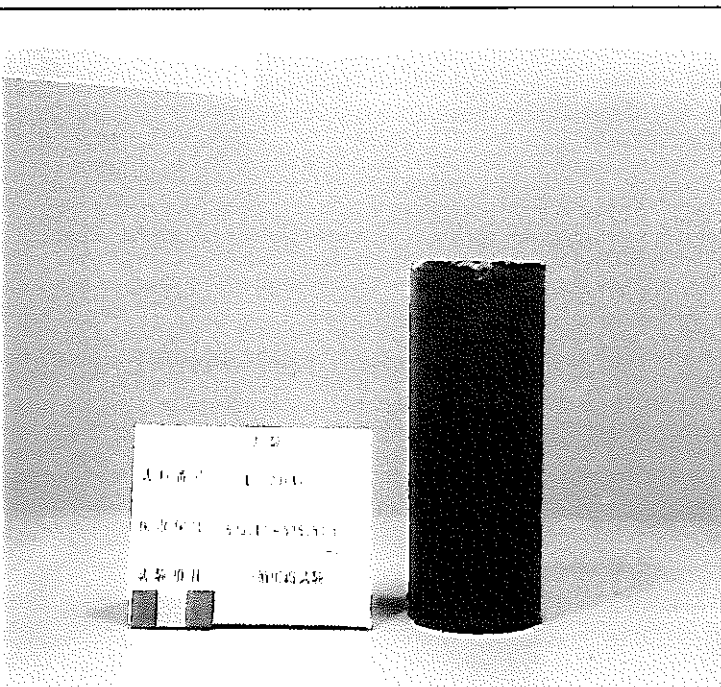
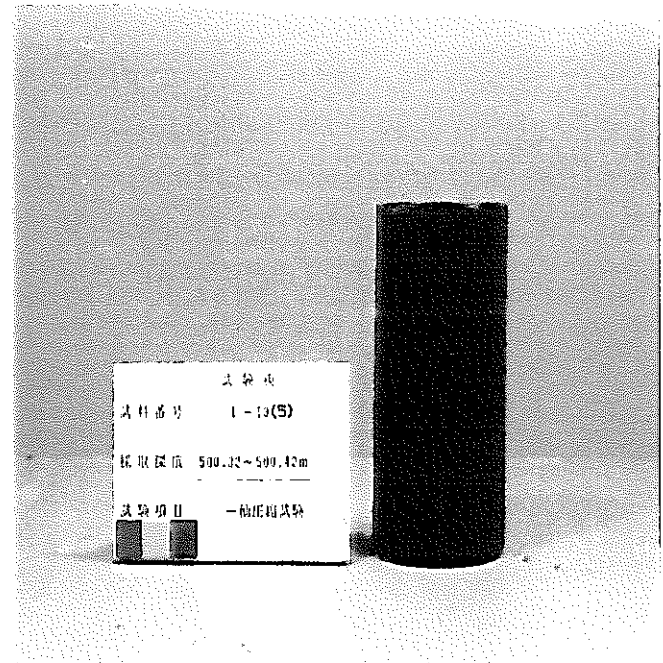
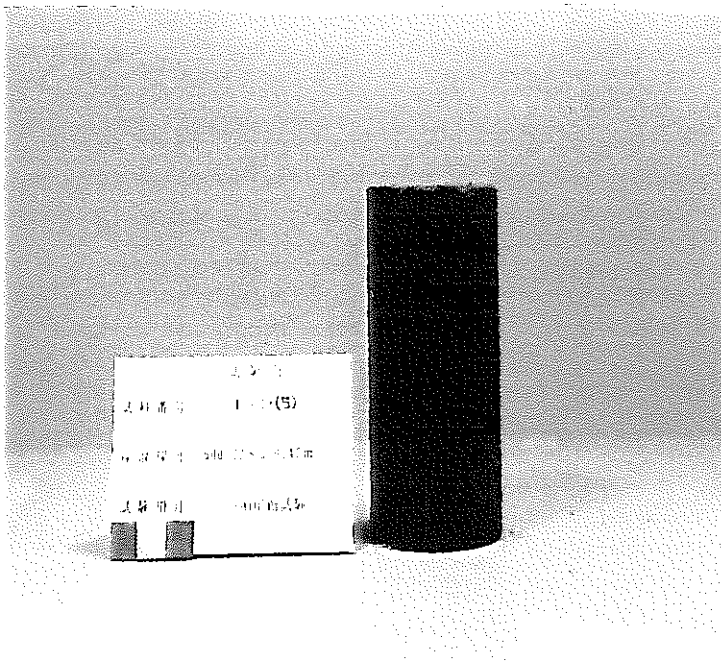
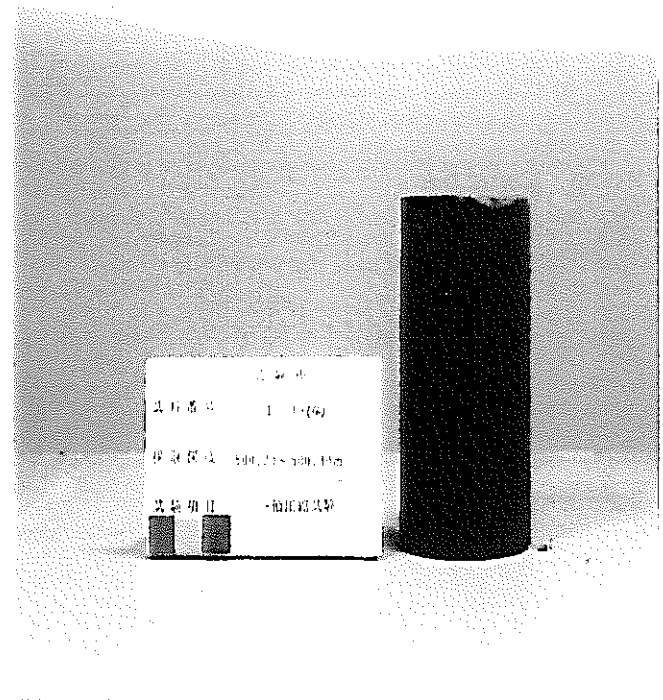
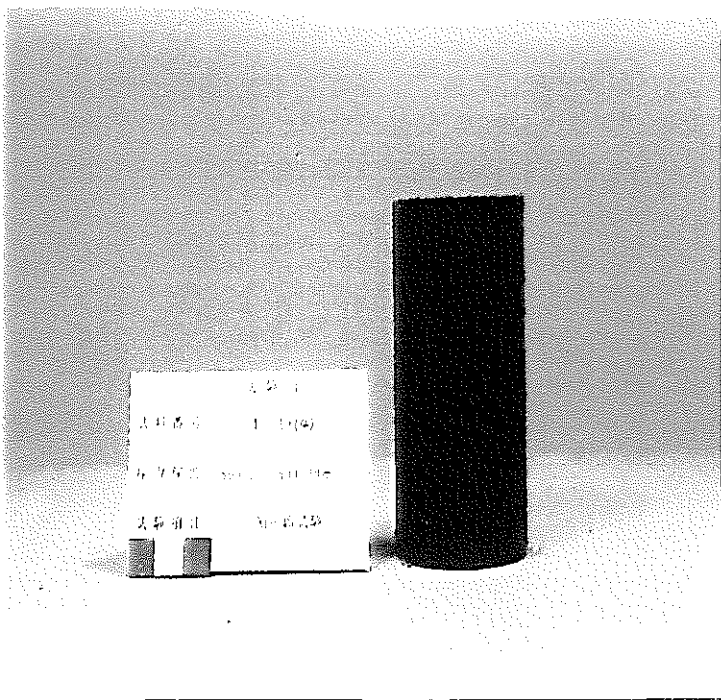
試驗號  
試料番号 1-12(7)  
採取深度 476.02~476.12m  
試驗項目 一軸圧縮試験

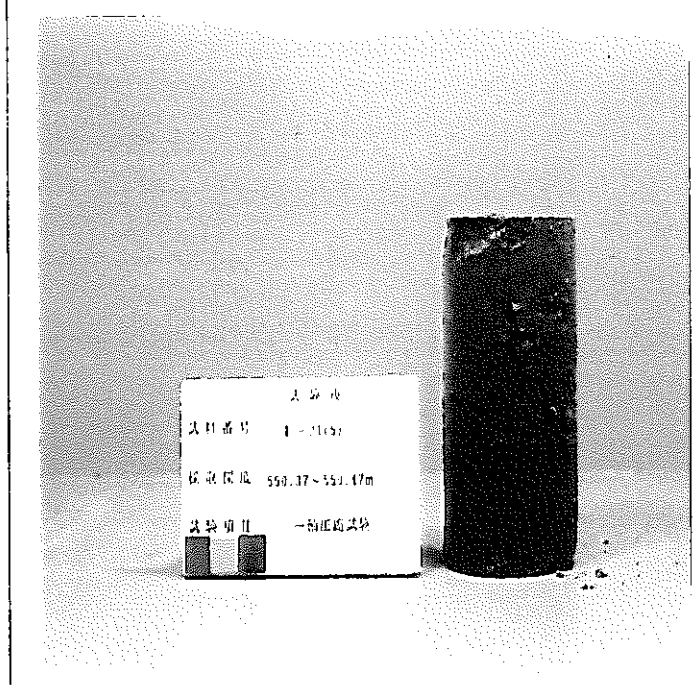
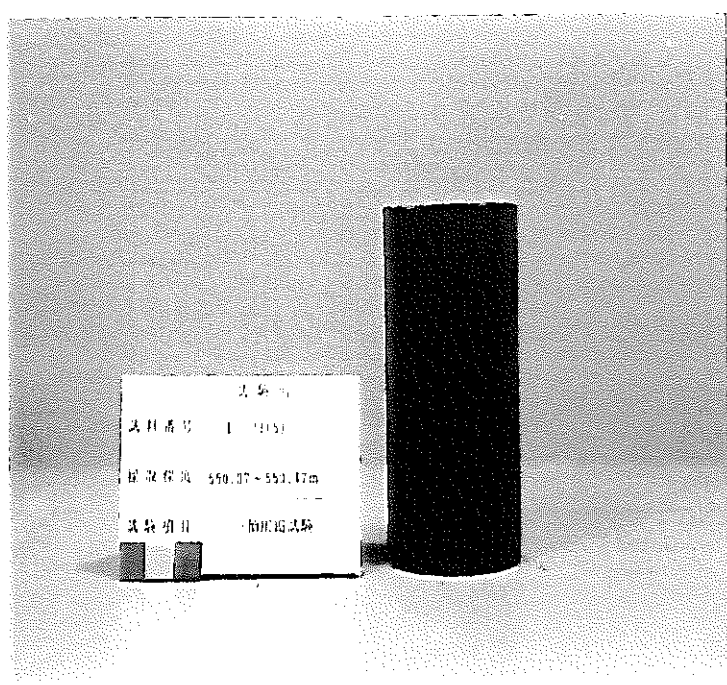
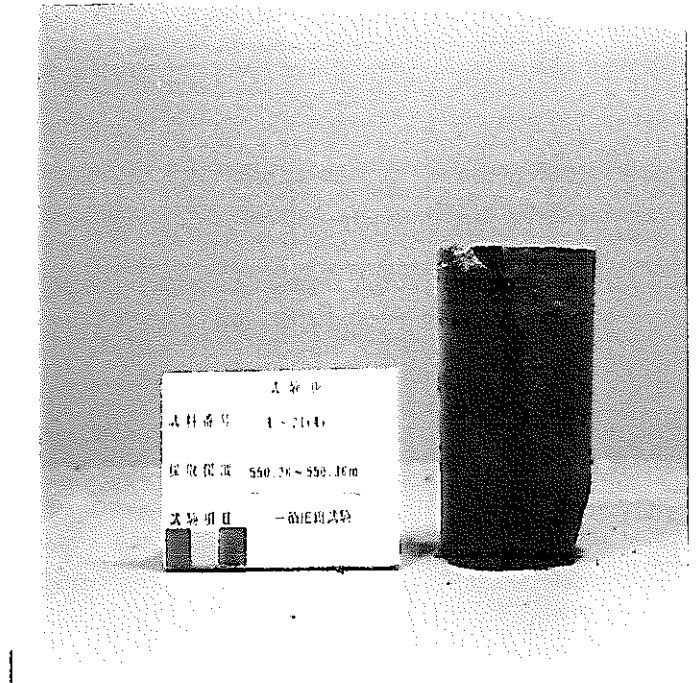
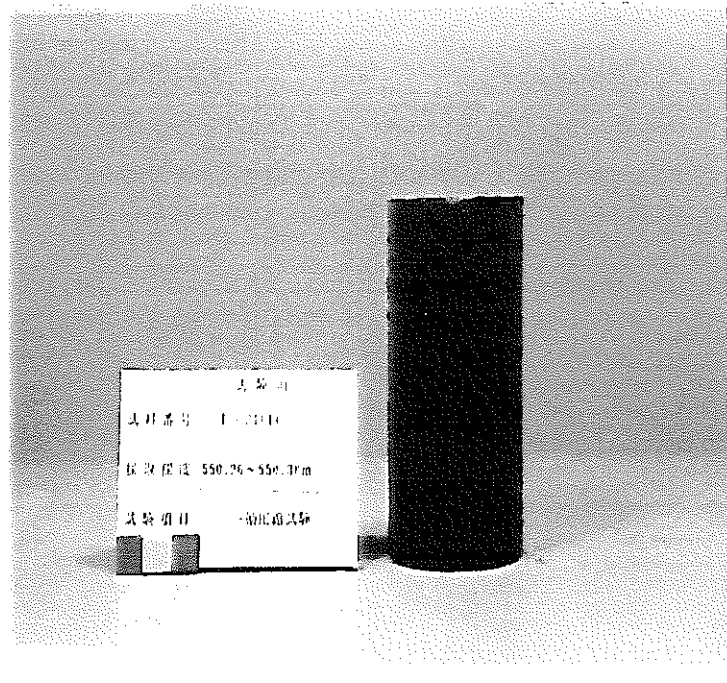
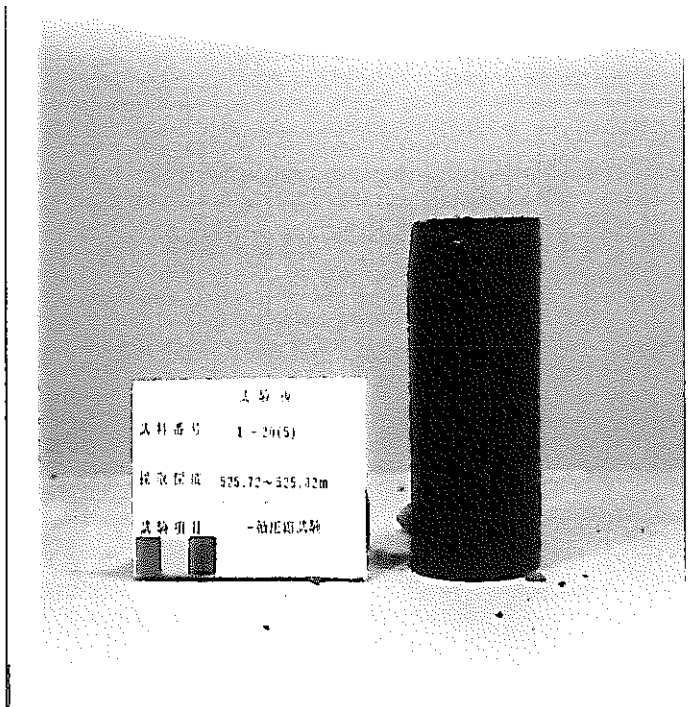
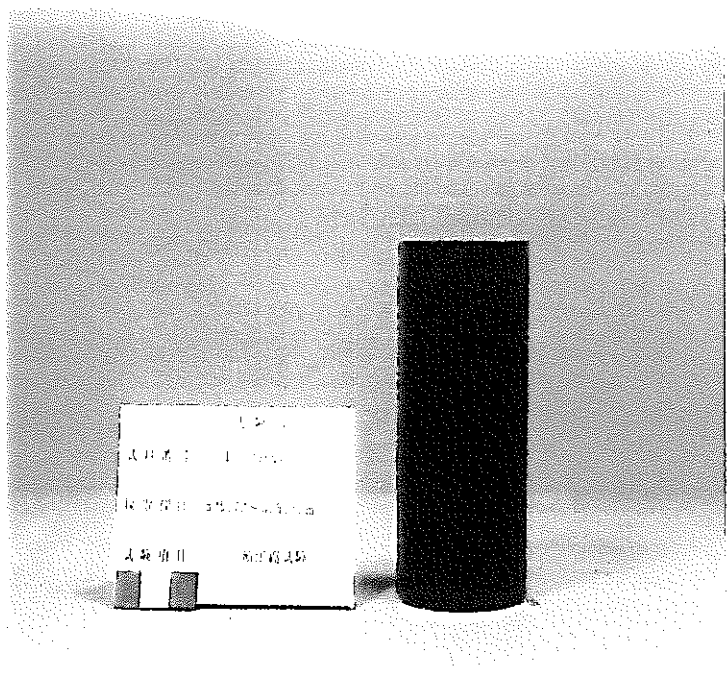


試驗號  
試料番号 1-12(8)  
採取深度 476.02~476.12m  
試驗項目 一軸圧縮試験

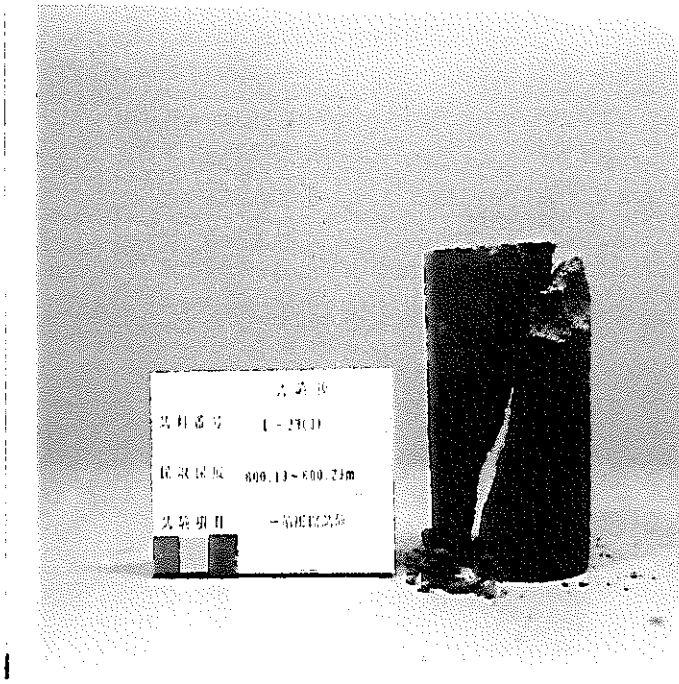
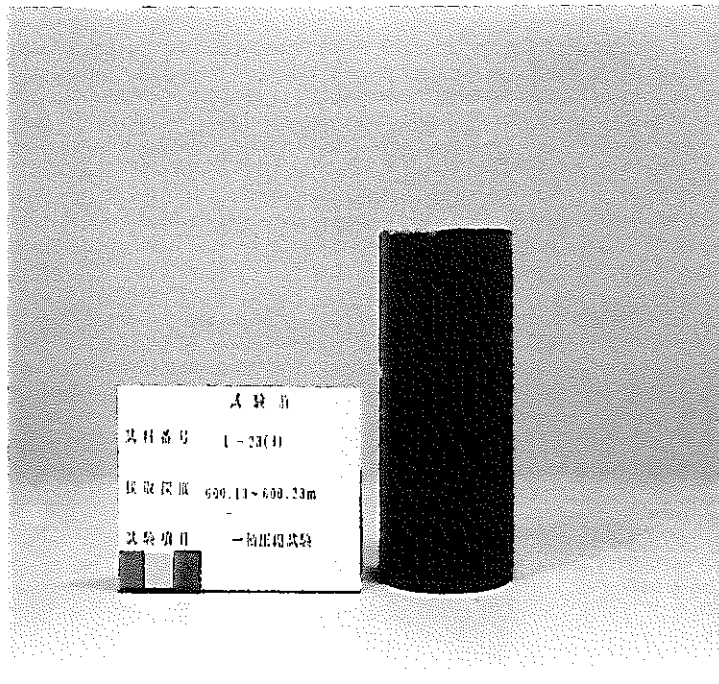
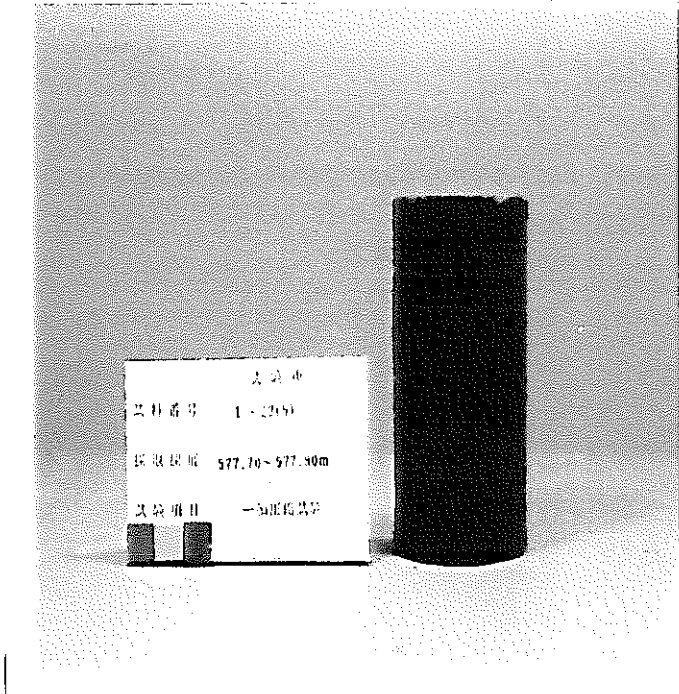
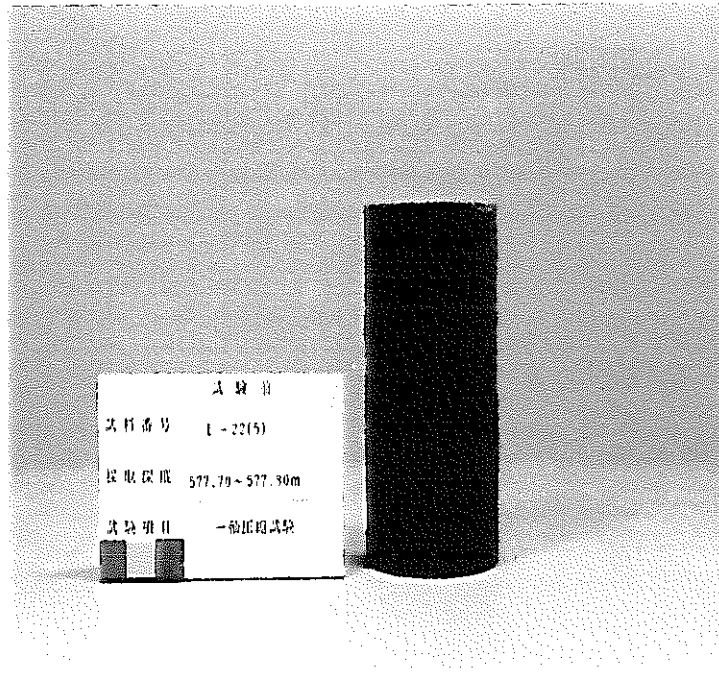
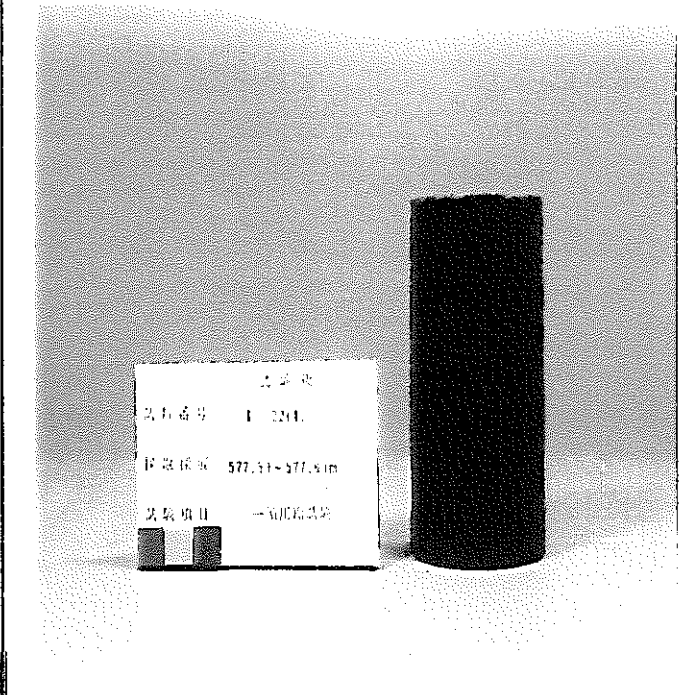
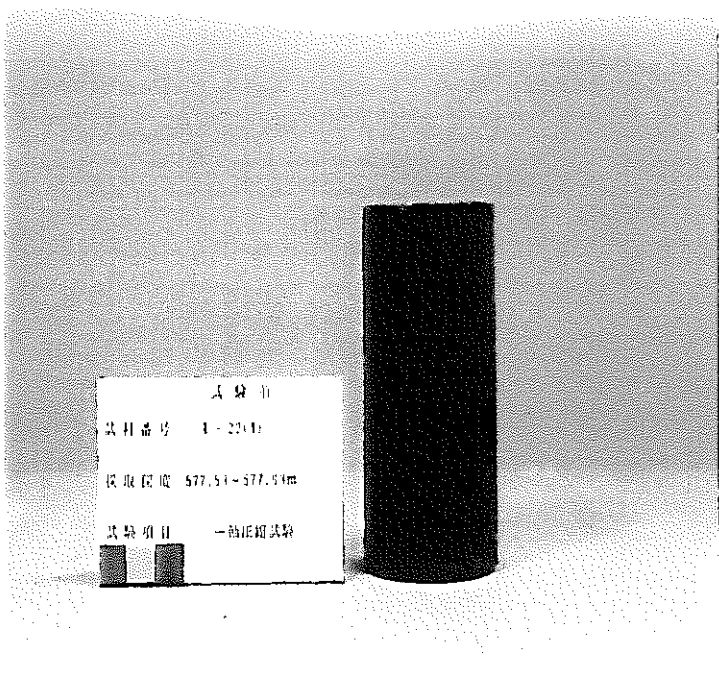


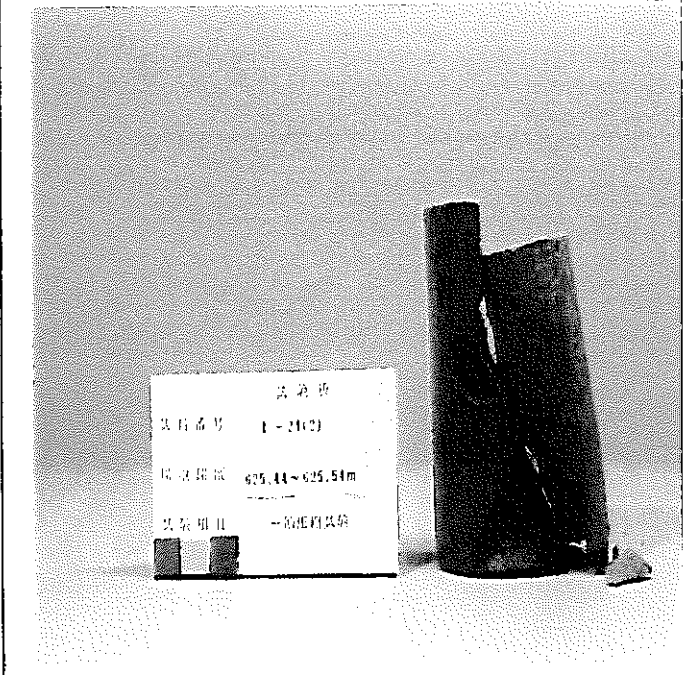
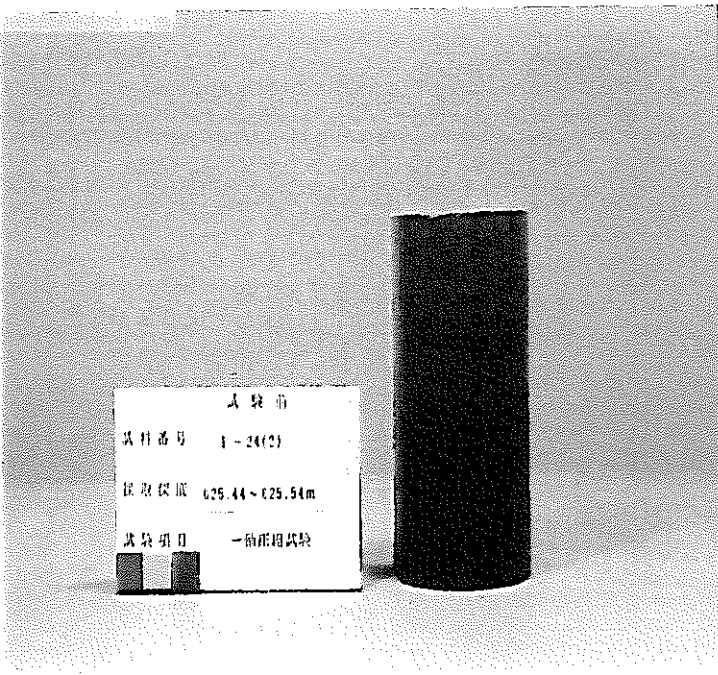
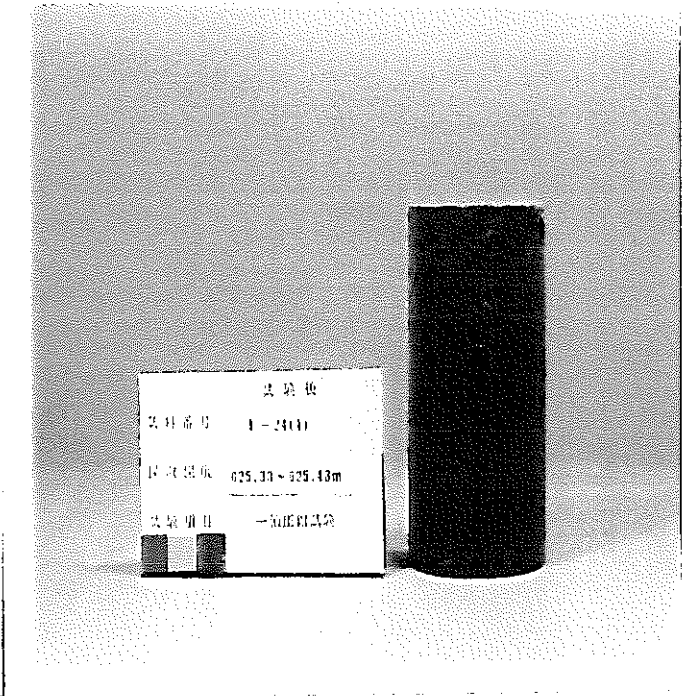
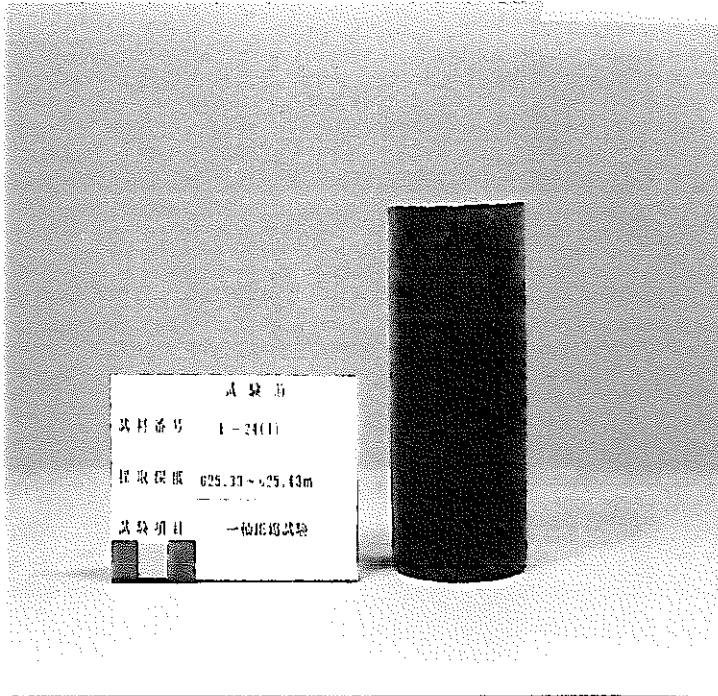
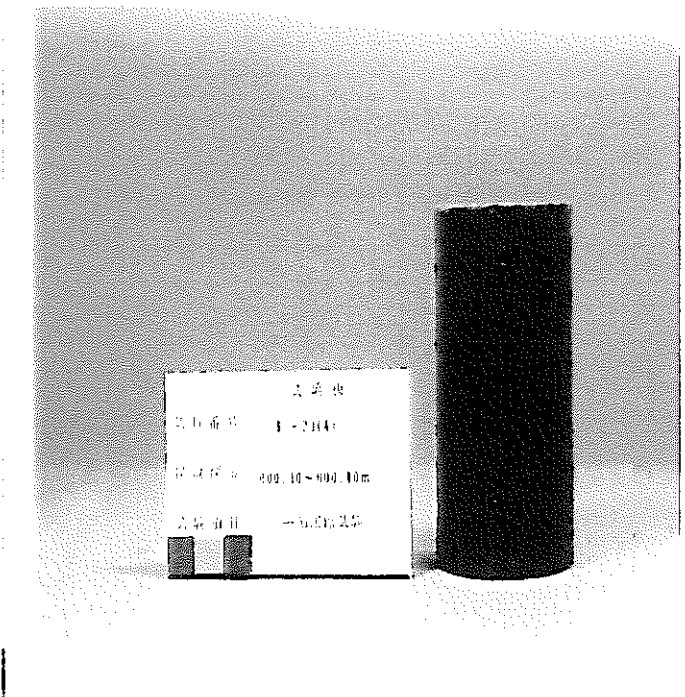
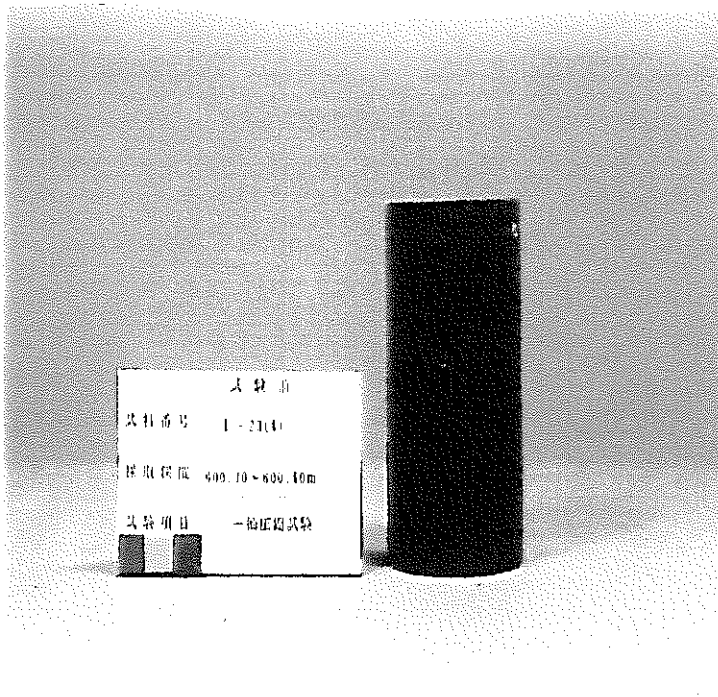




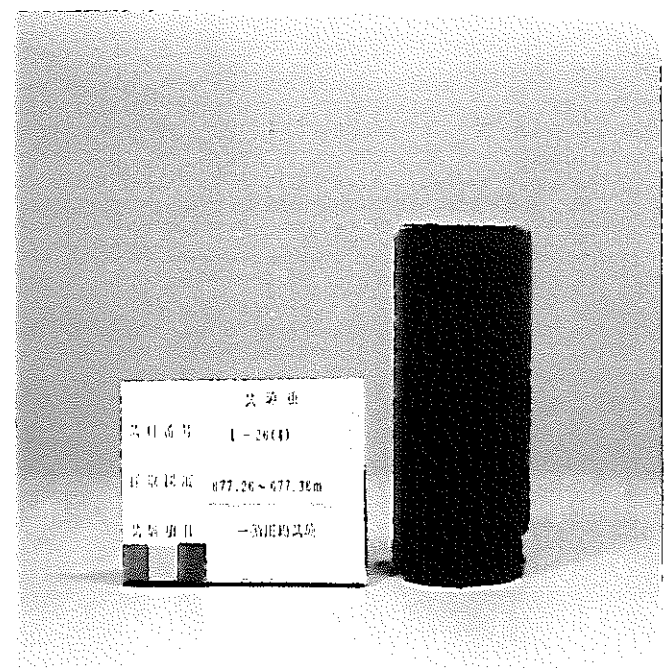
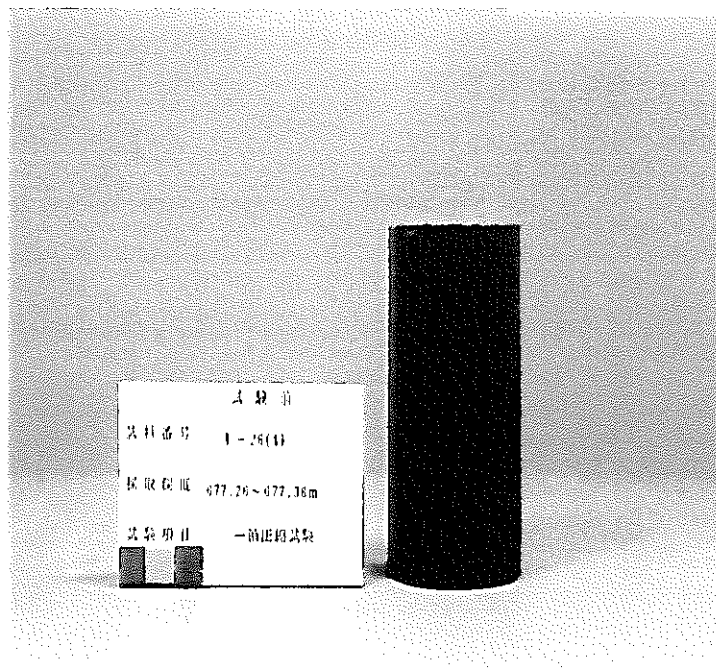
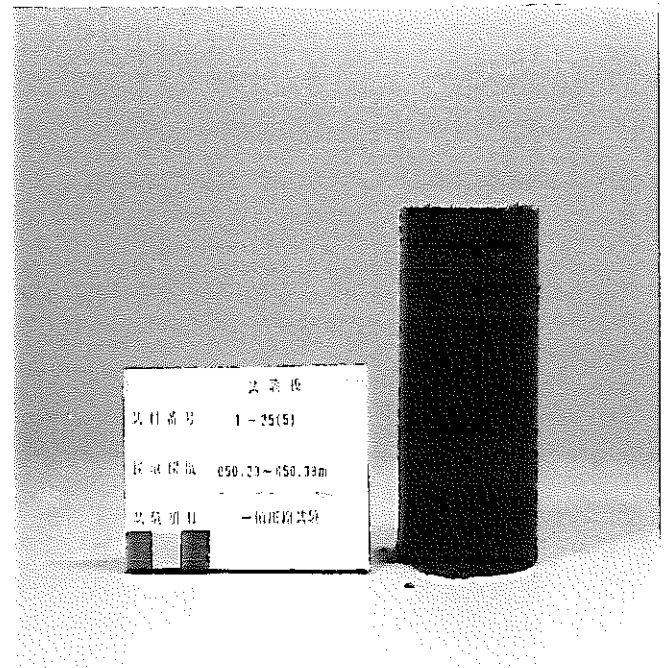
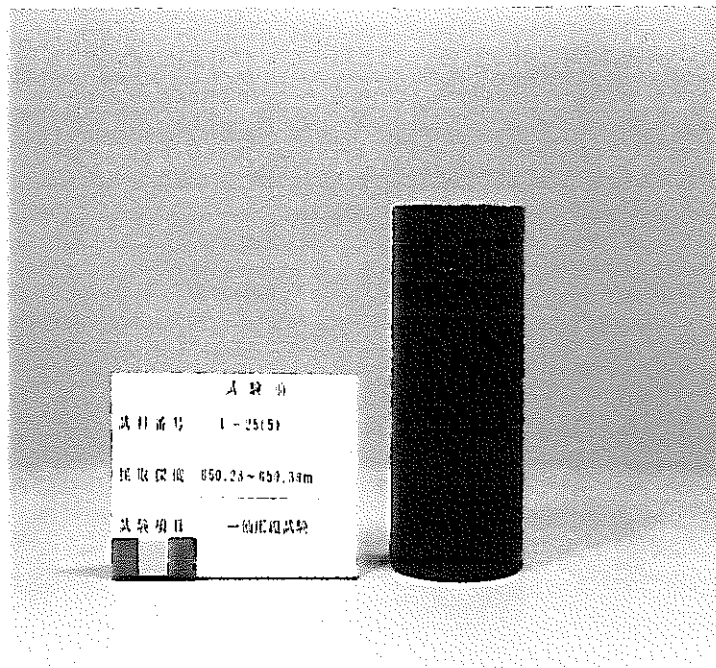
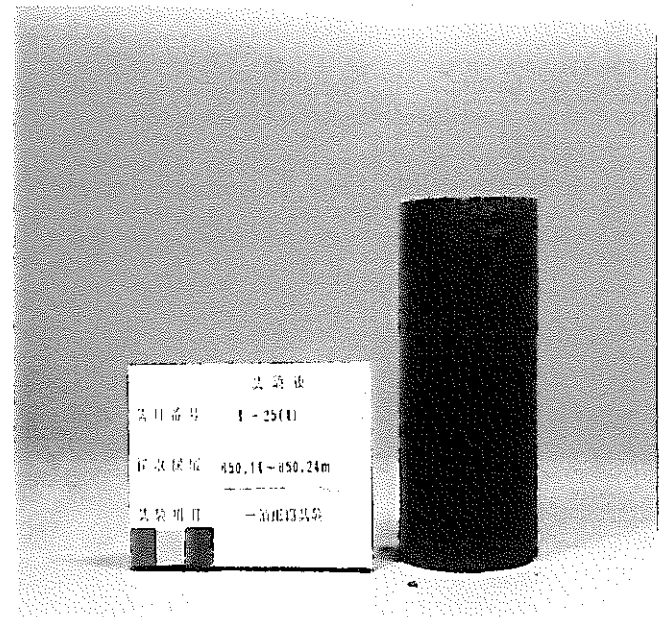
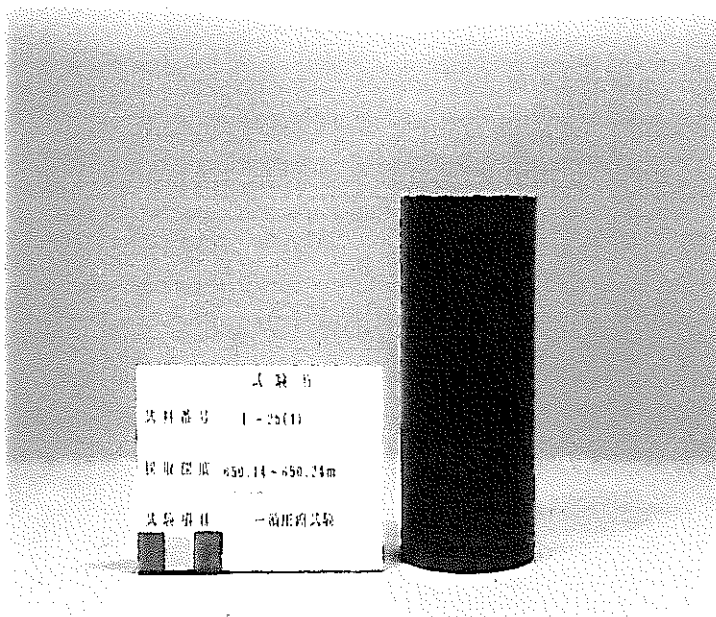


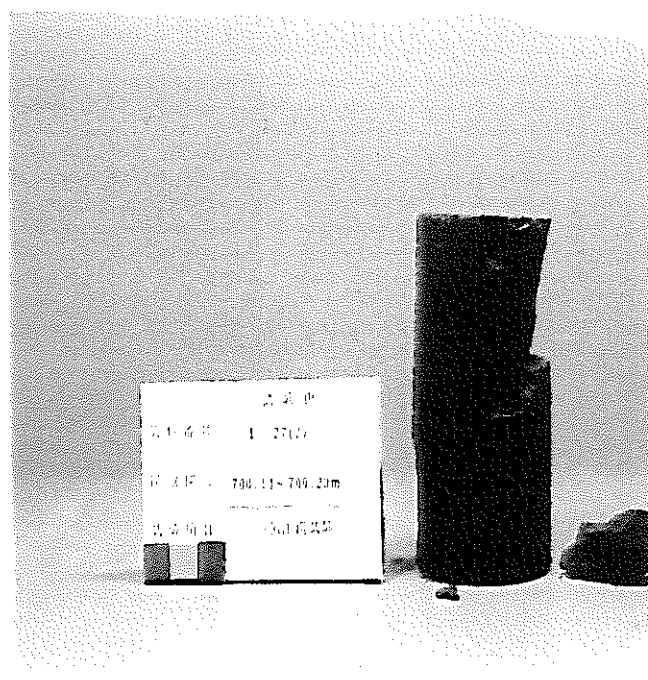
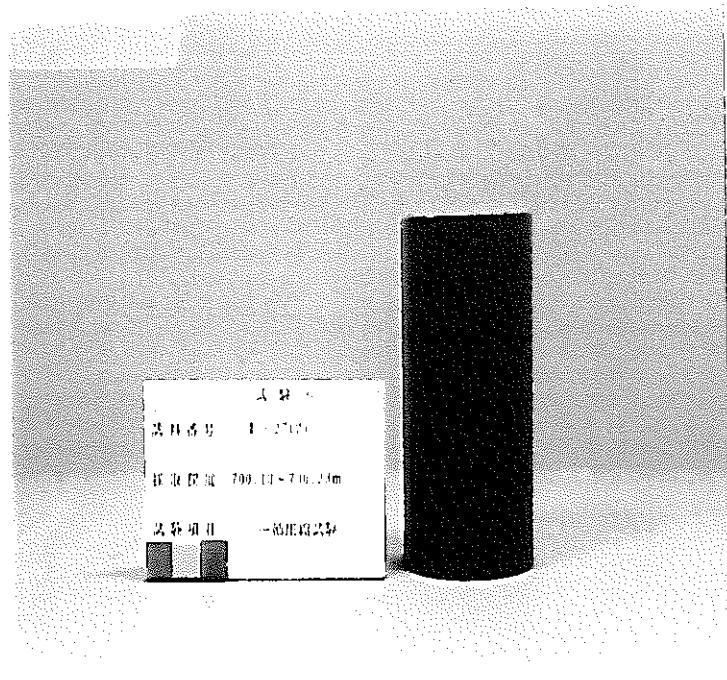
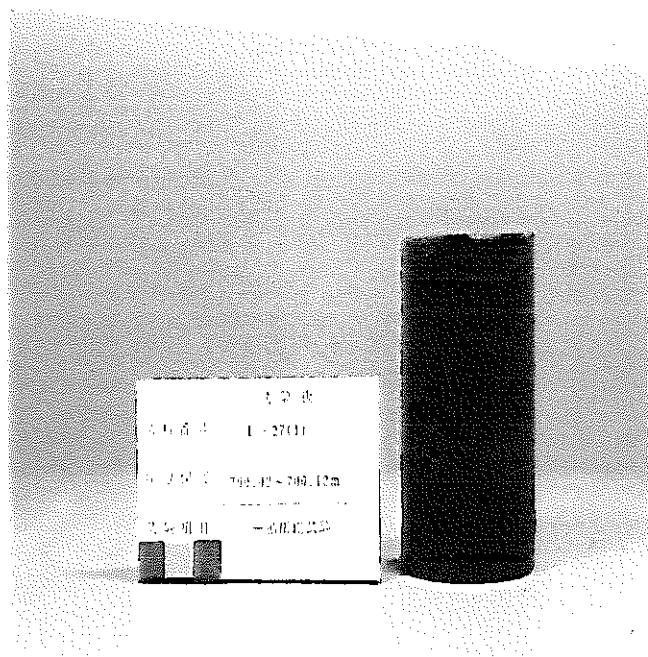
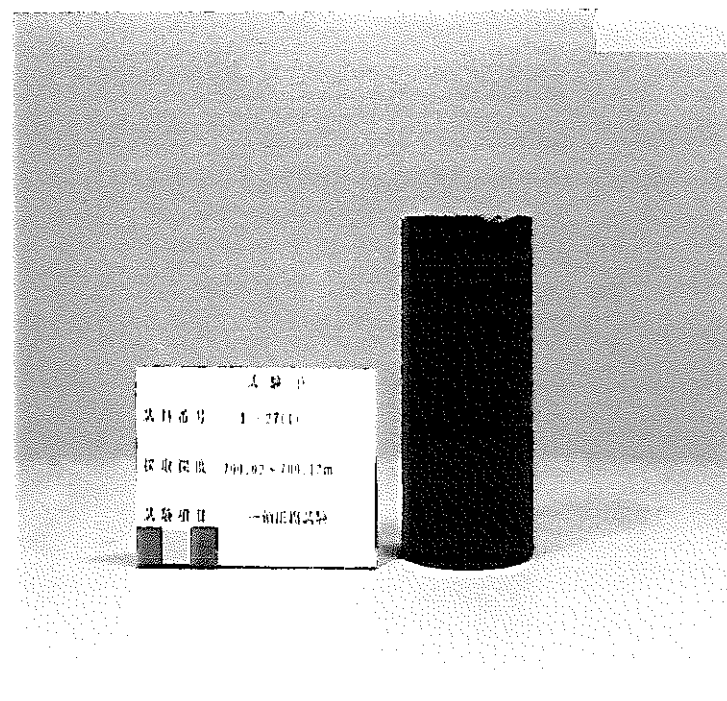
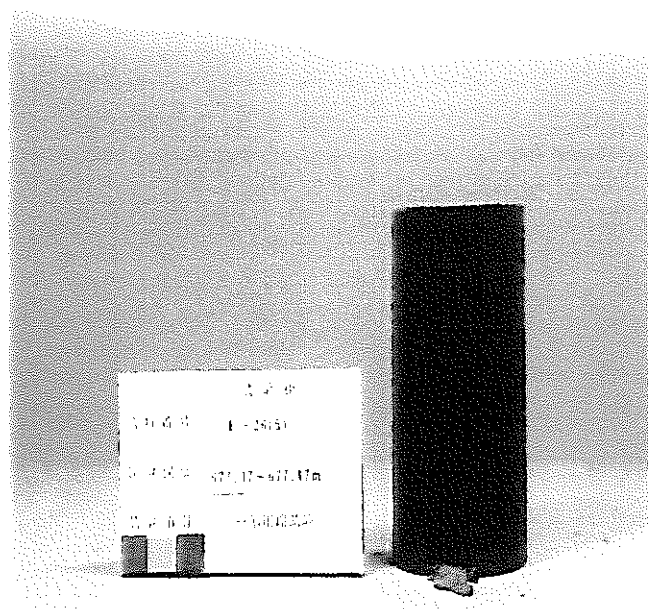
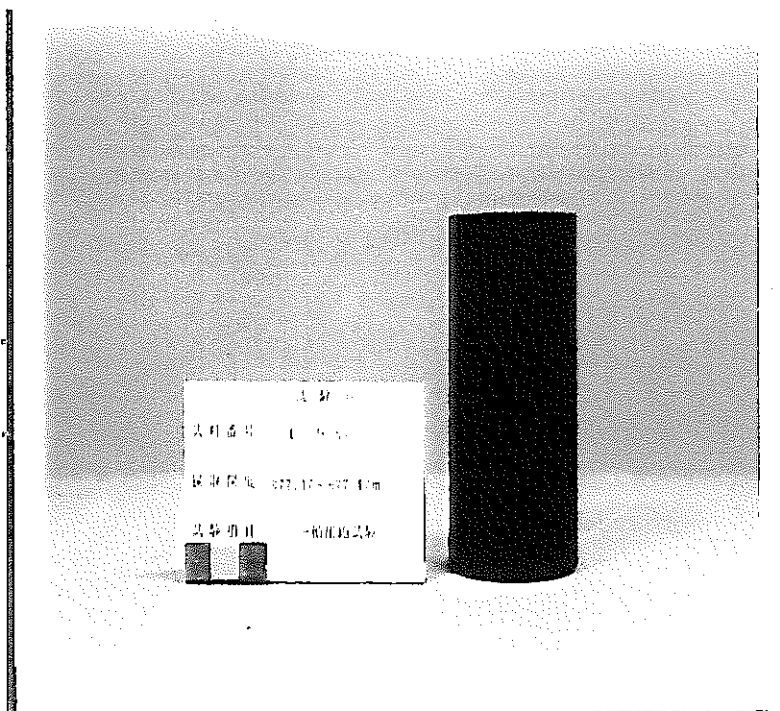




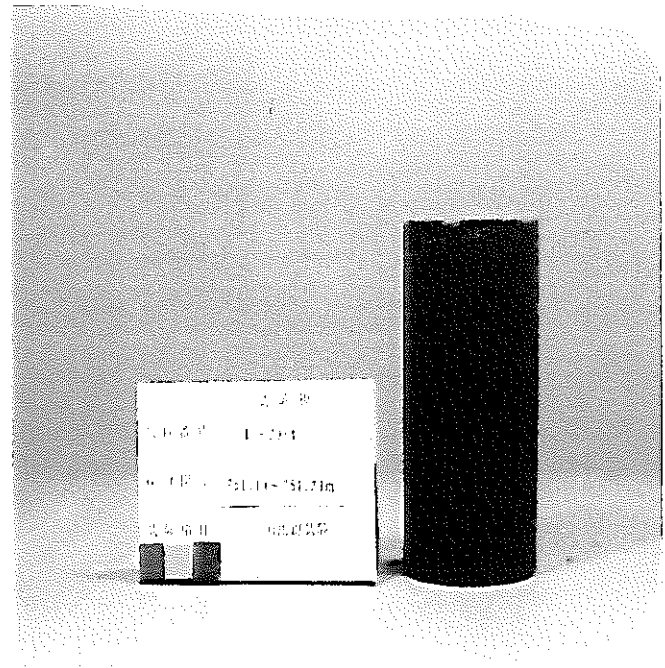
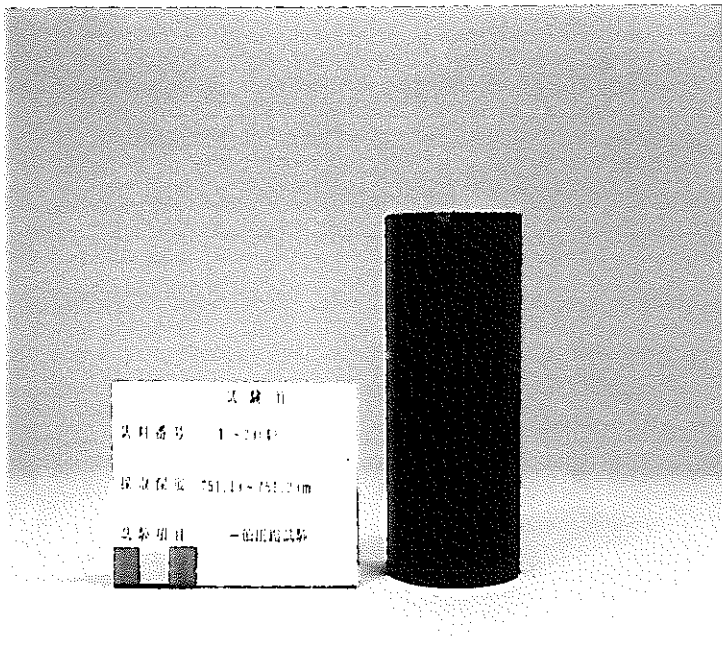
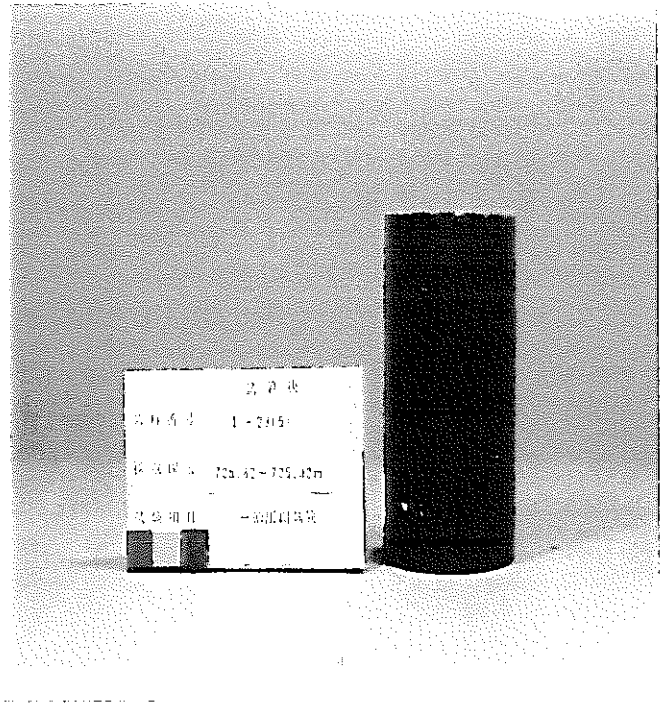
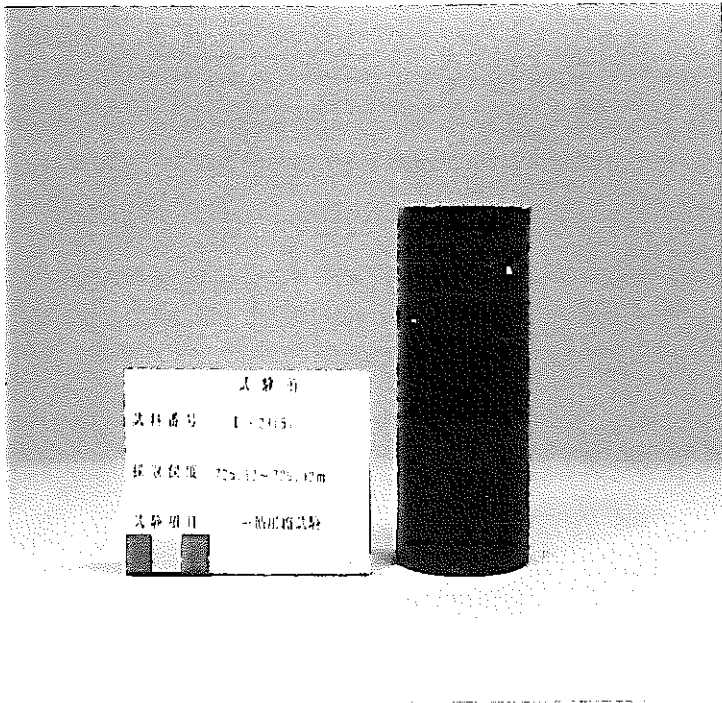
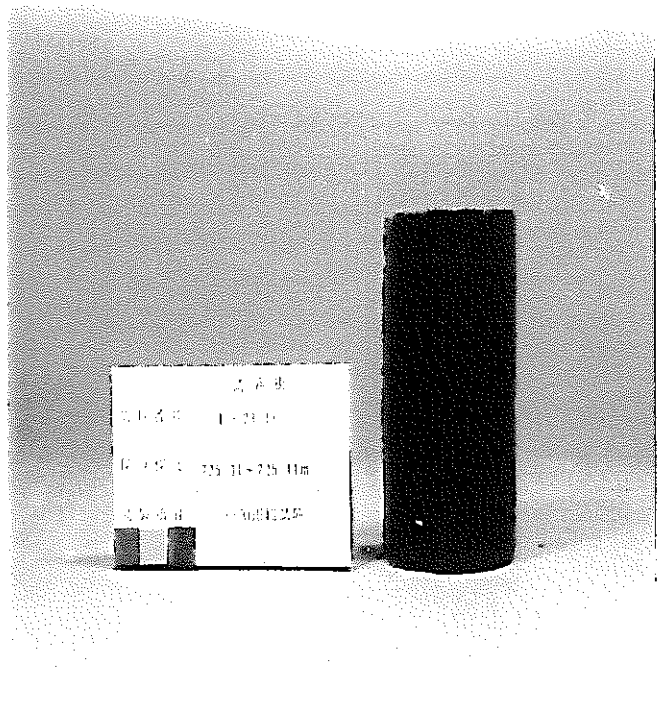
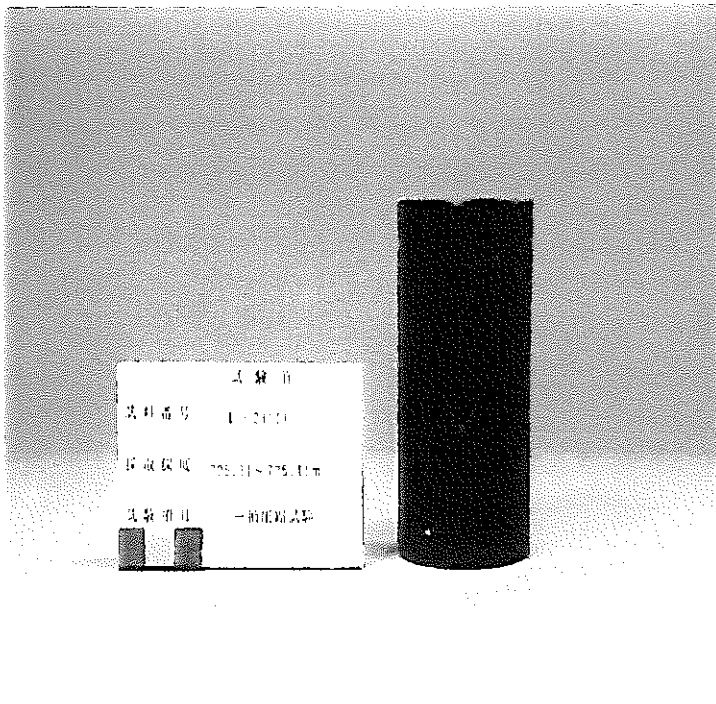


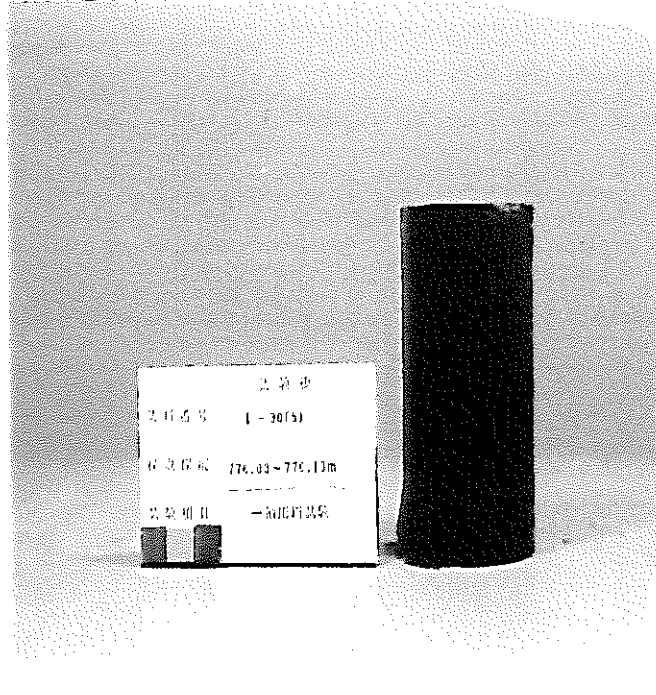
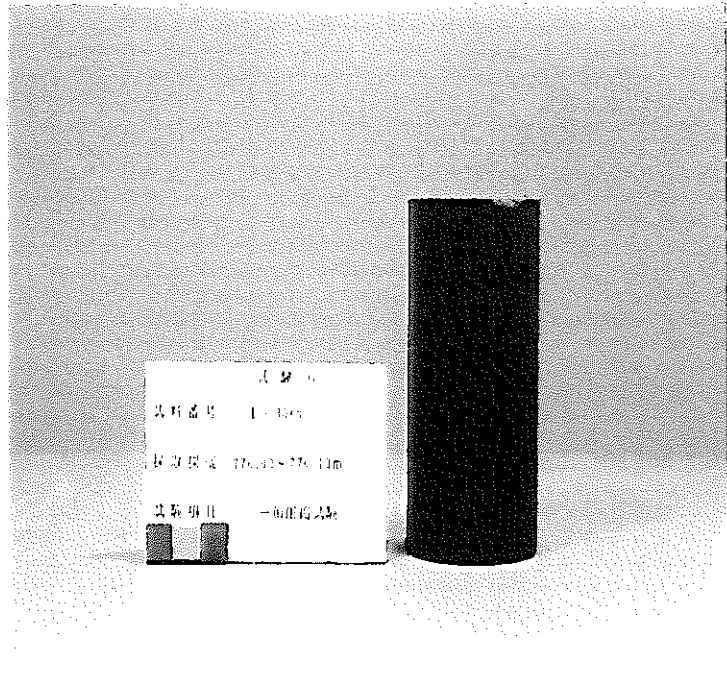
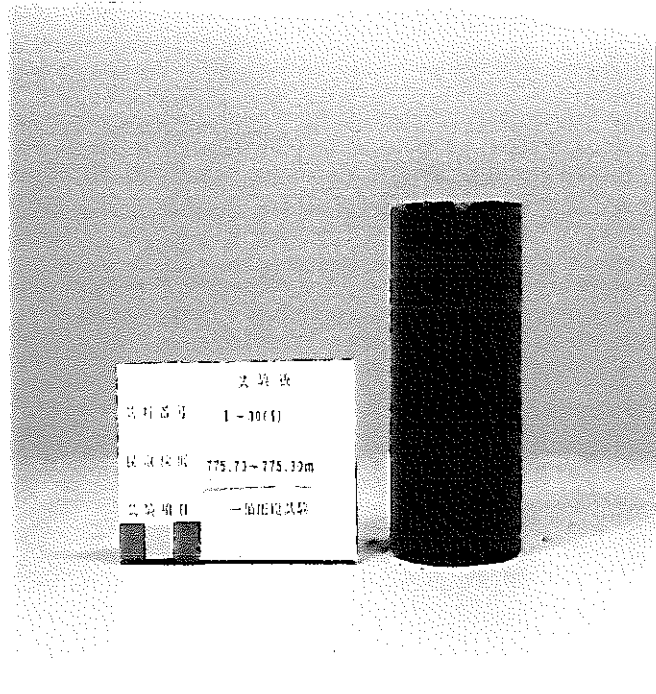
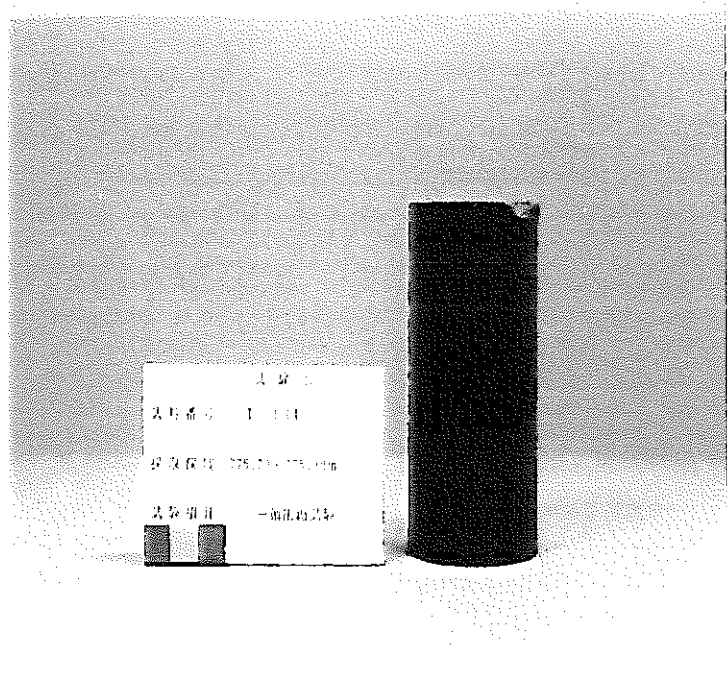
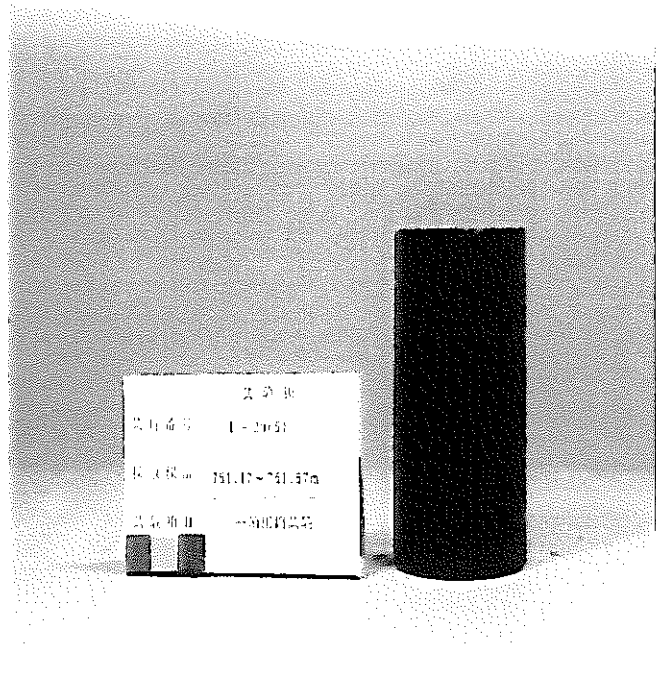
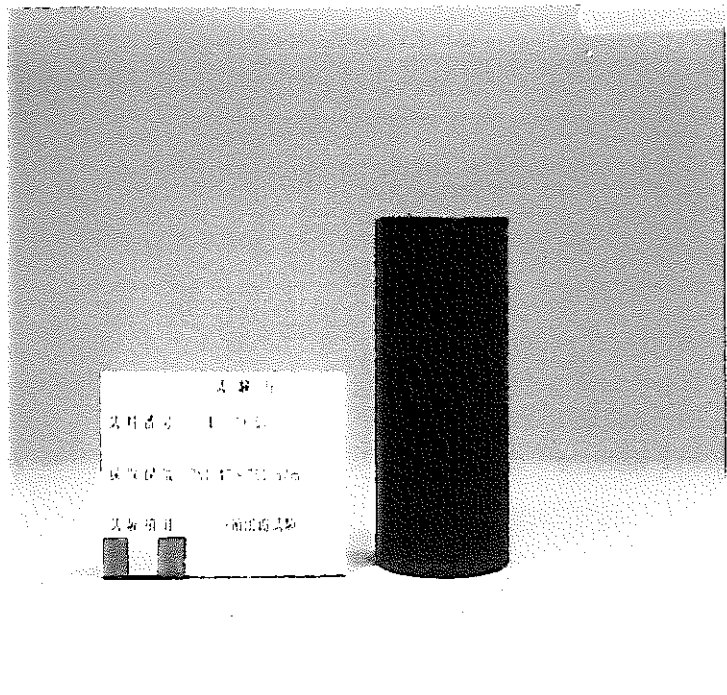




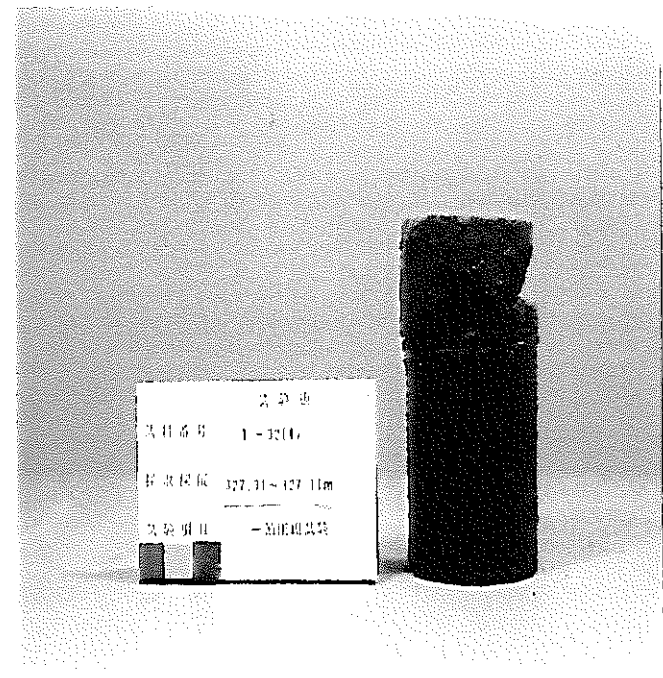
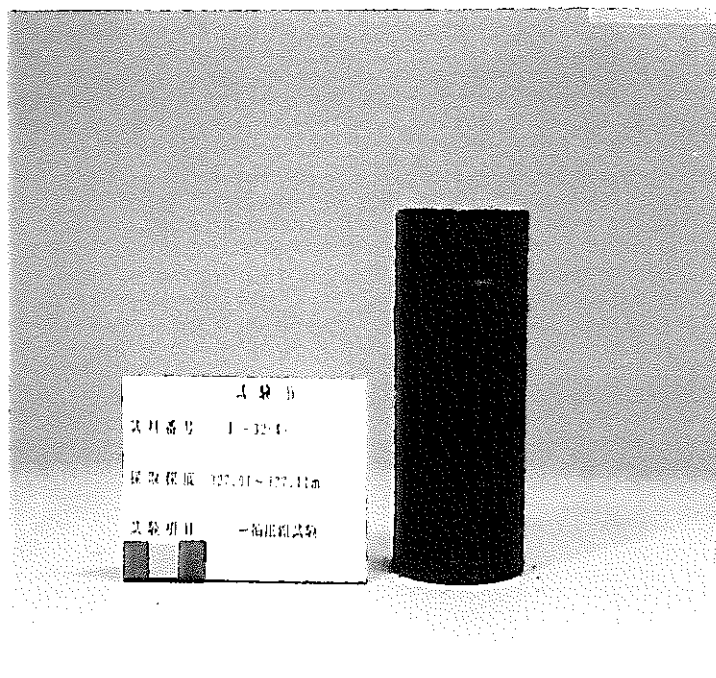
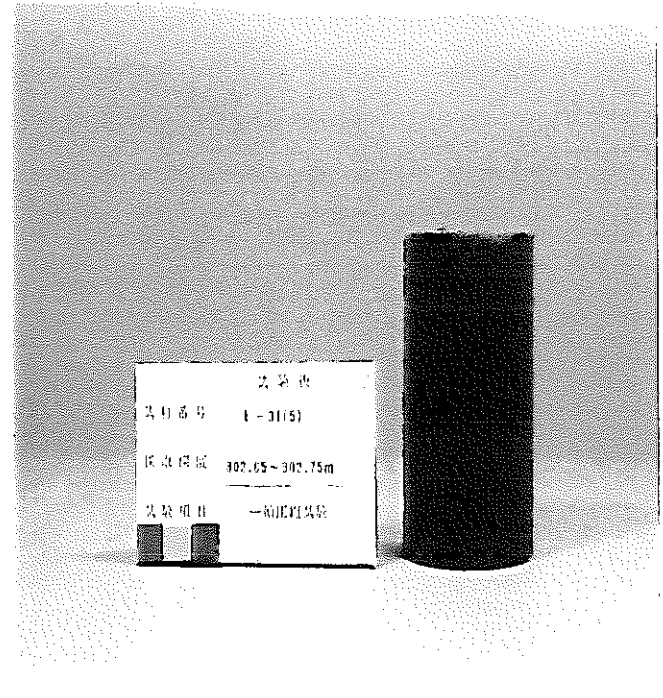
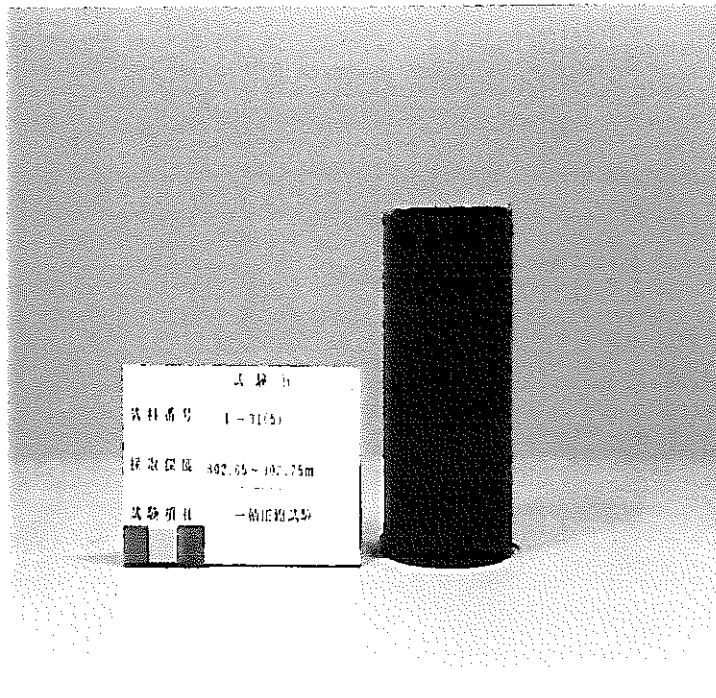
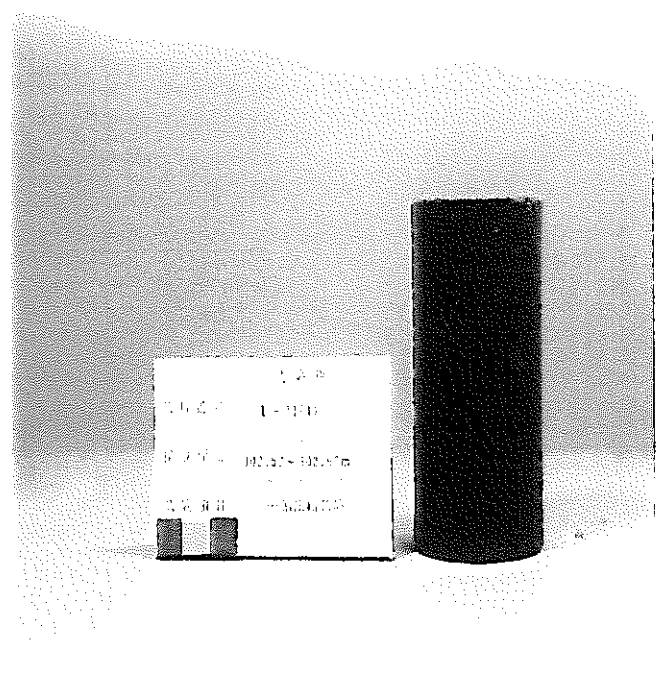
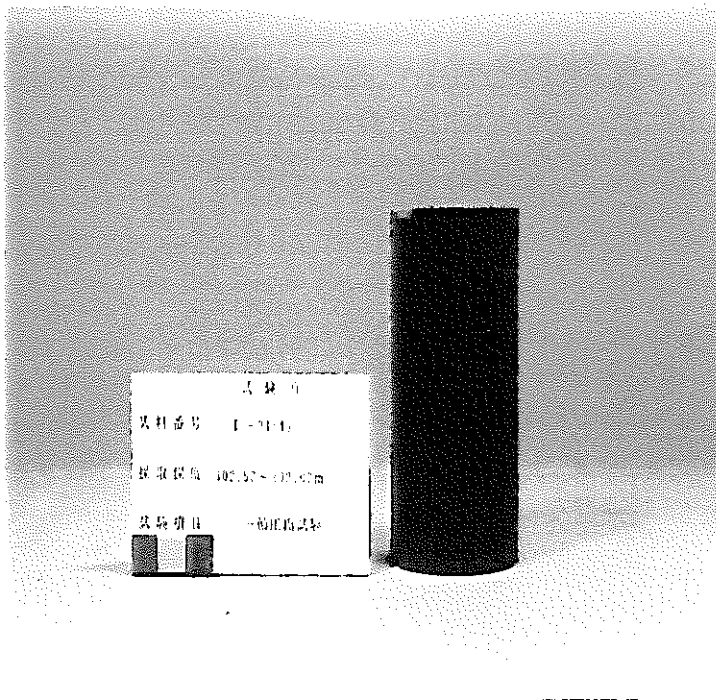


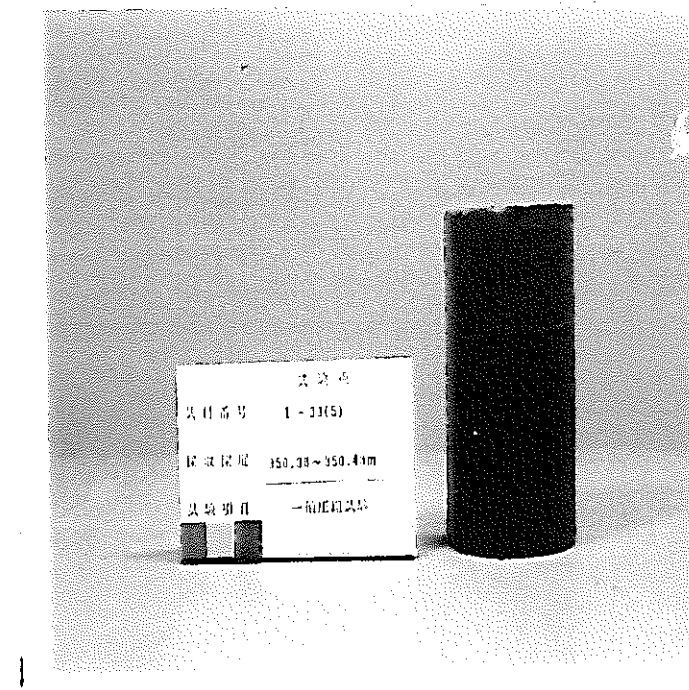
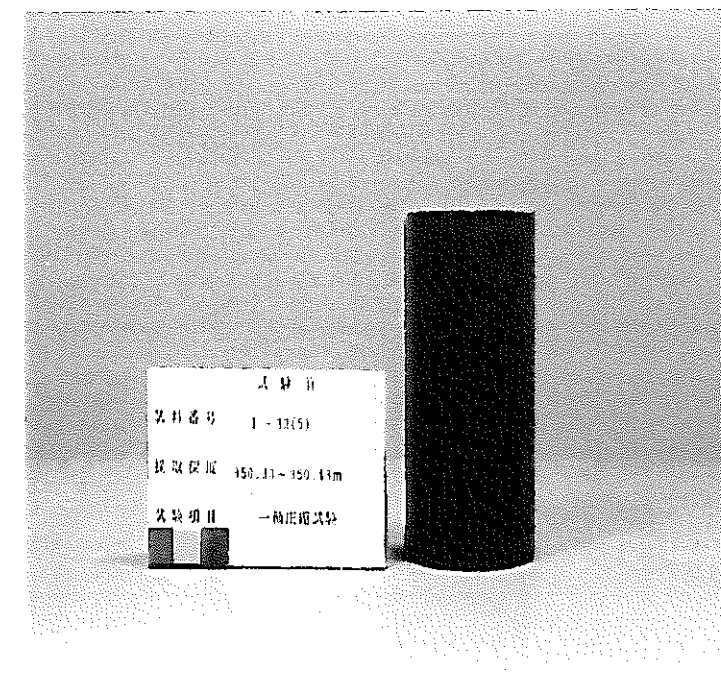
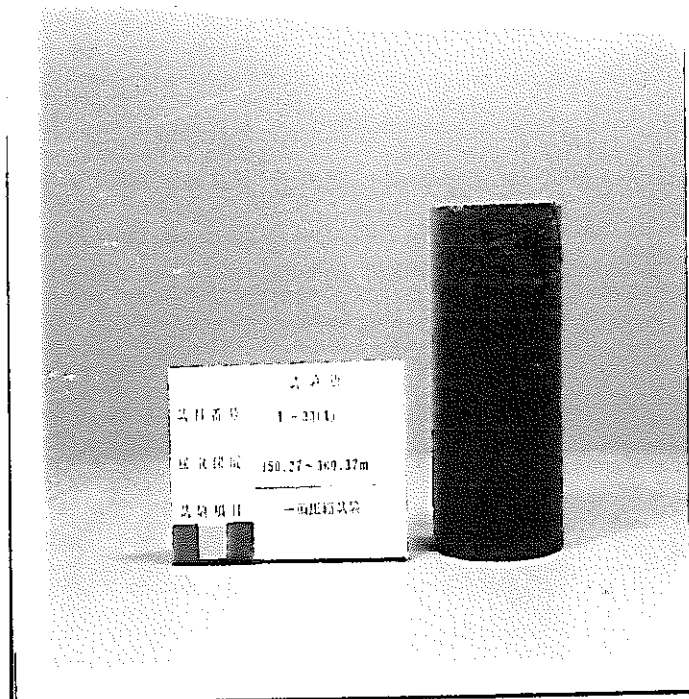
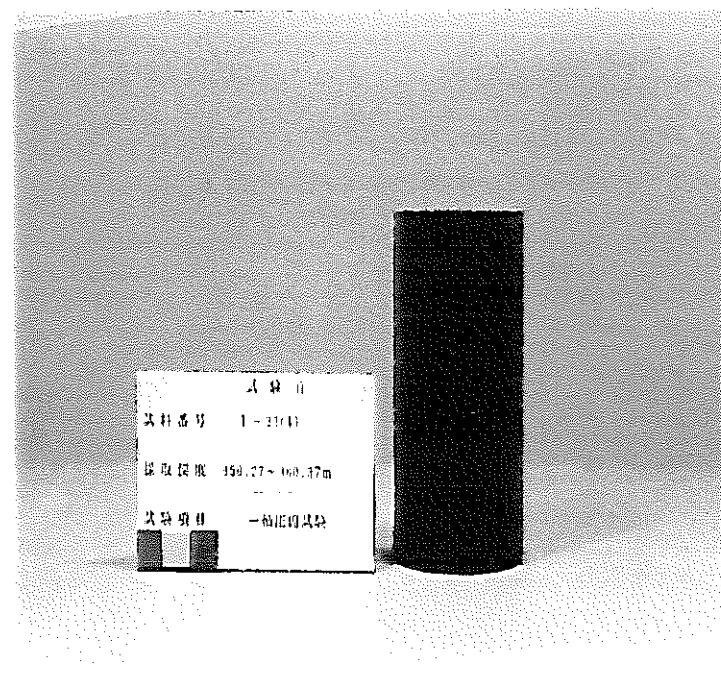
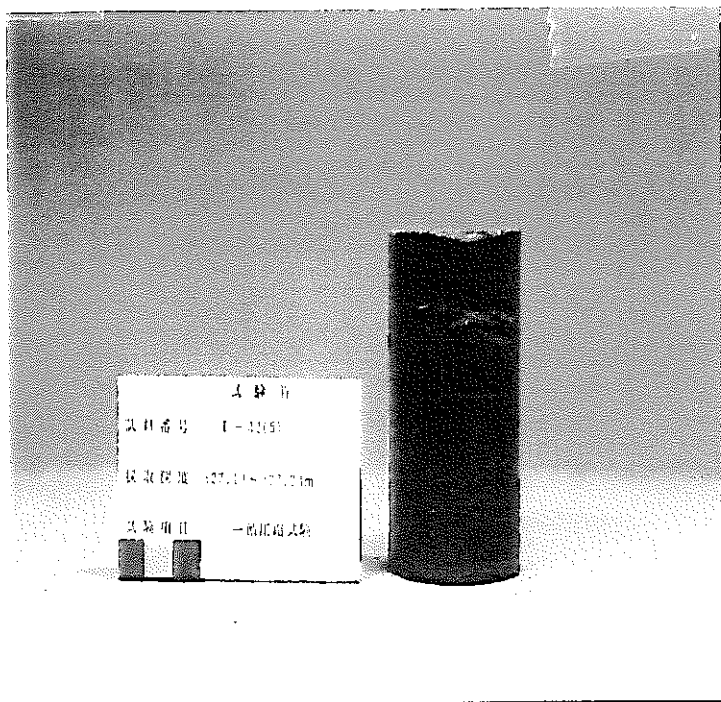




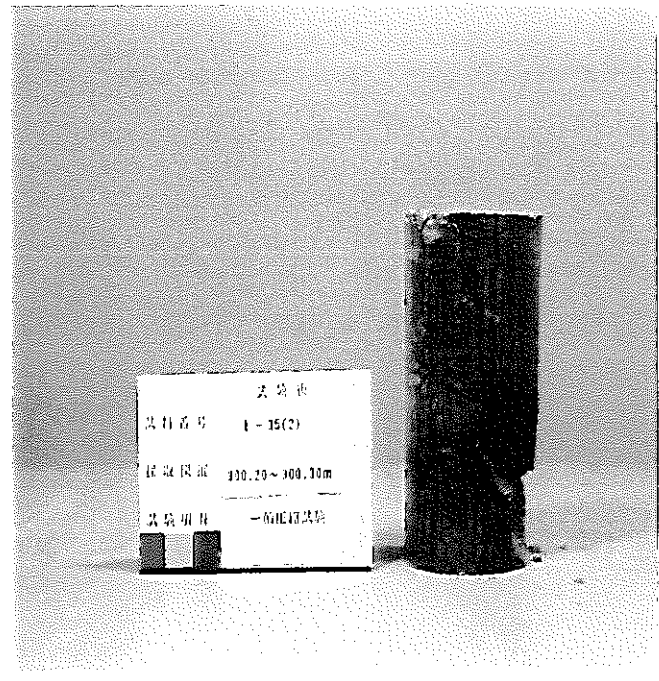
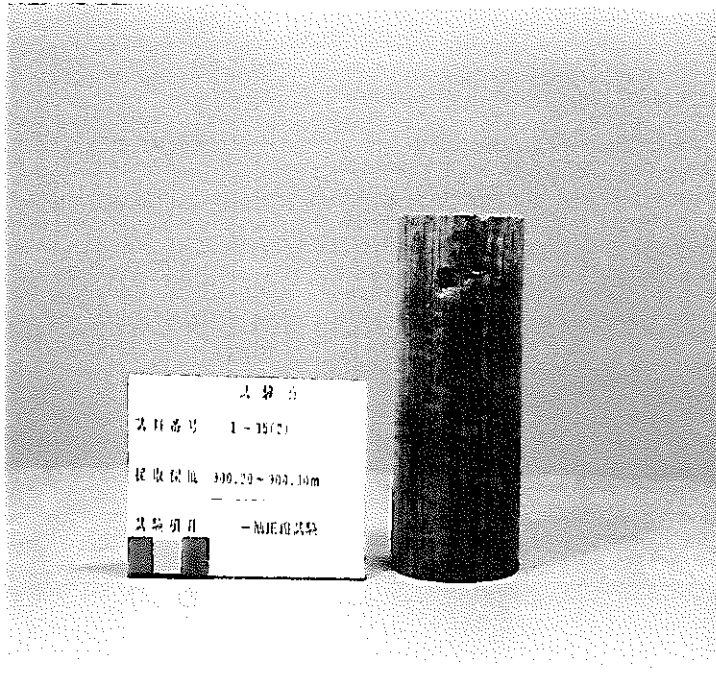
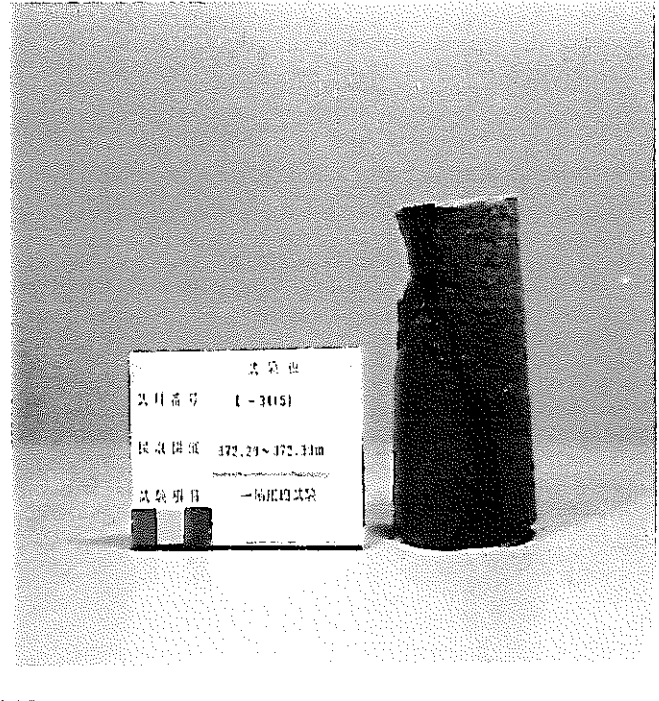
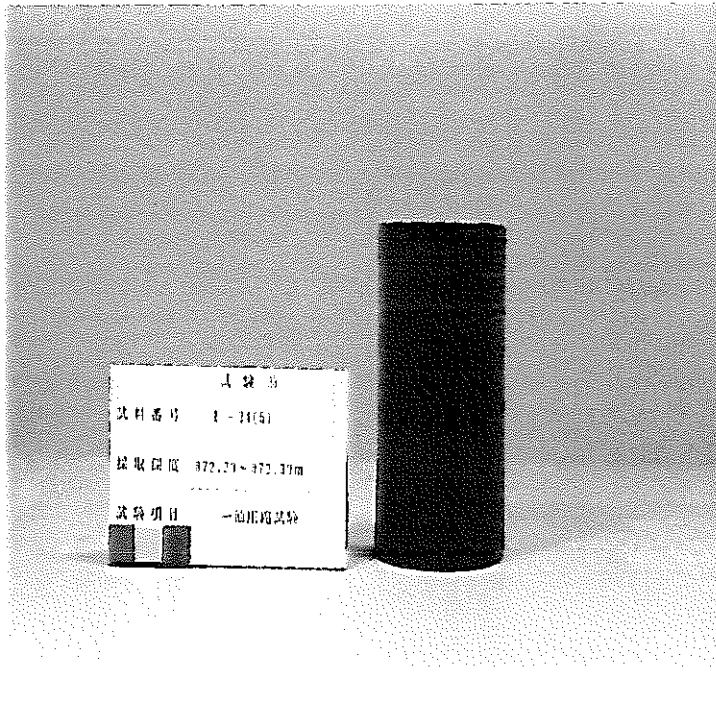
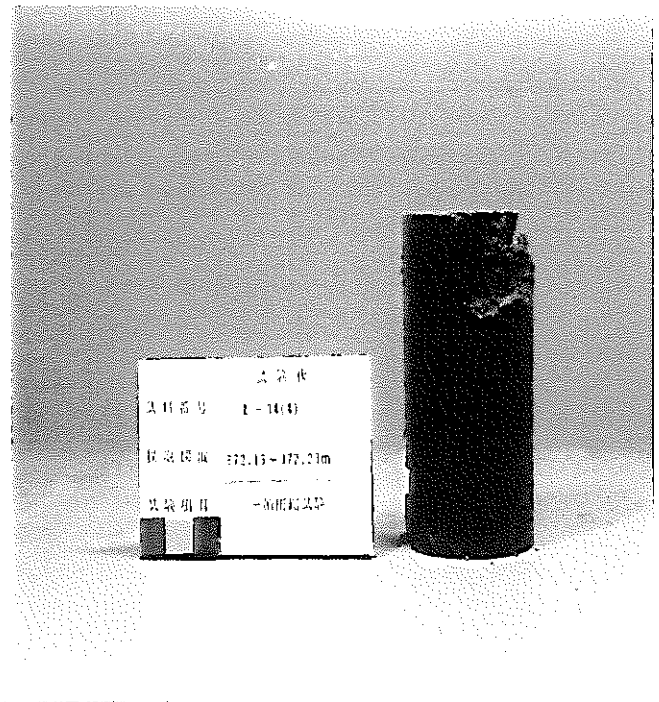
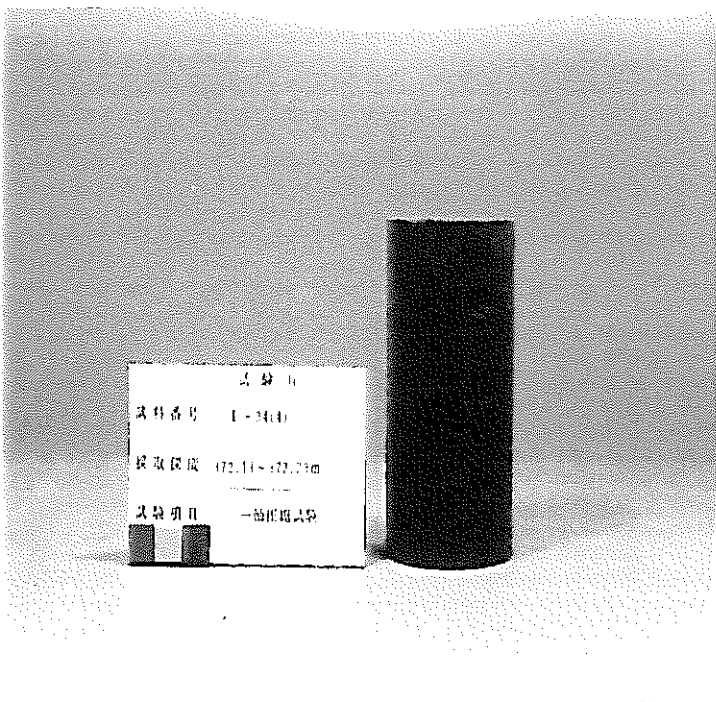








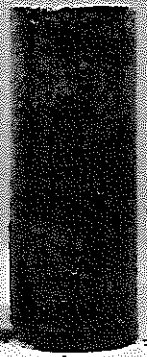




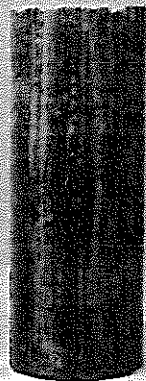
試驗品  
試料番号 1-35(3)  
採取深度 301.21~301.31m  
試験項目 一般物理試験



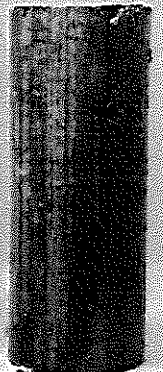
試驗品  
試料番号 1-35(3)  
採取深度 301.21~301.31m  
試験項目 一般物理試験



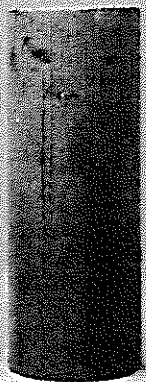
試驗品  
試料番号 1-36(1)  
採取深度 321.36~321.46m  
試験項目 一般物理試験



試驗品  
試料番号 1-36(1)  
採取深度 321.36~321.46m  
試験項目 一般物理試験



試驗品  
試料番号 1-36(2)  
採取深度 321.17~321.27m  
試験項目 一般物理試験



試驗品  
試料番号 1-36(2)  
採取深度 321.17~321.27m  
試験項目 一般物理試験

